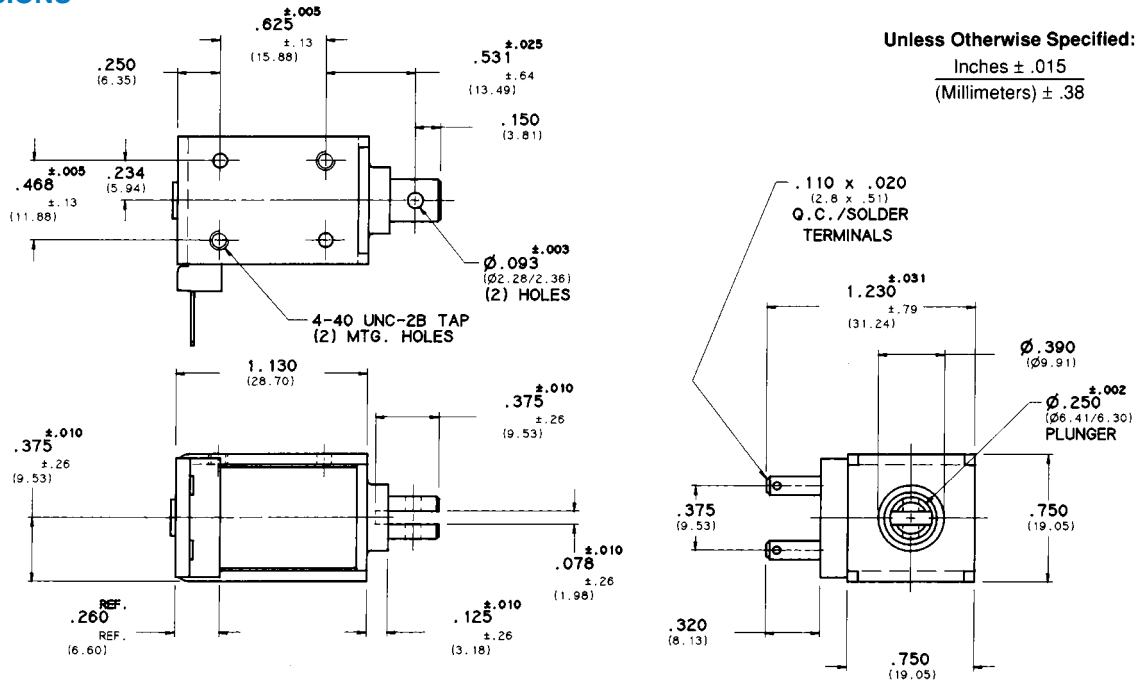


# D-22 "D" FRAME SOLENOID

## DIMENSIONS



### COIL TREATMENT:

Plastic Encapsulation.  
 Class A Rating (standard)

### MAXIMUM OPERATING TEMPERATURE:

Class A – 105°C (221°F)

### DIELECTRIC STRENGTH:

30 Volts and Under: 500 VRMS  
 Over 30 Volts: 1,000 VRMS plus 2x rated voltage for one minute

### STANDARD POWER RATINGS:

DUTY	NOMINAL AC POWER (SEATED)	NOMINAL DC POWER
Continuous	6.5 VA	4.2 W
Intermittent	8.5 VA	9.6 W
Pulse	60 VA	40 W

### UL INFORMATION:

UL File No. E57982 For Continuous Duty  
 UL File No. E74443 For Insulation Systems  
 S105

### WEIGHT:

Plunger – .25 Oz.  
 Total – 1.5 Oz.

### PLUNGER GUIDE MATERIAL:

Plastic

### LIFE EXPECTANCY:

10<sup>7</sup> Cycles Under Optimum Load Conditions

### TERMINATION:

.110 In. Quick-Connect/Solder Lug (standard)  
 Wire Leads (optional with tape-wrapped coils)

### PLUNGER CONE ANGLE (DC):

60 degrees (standard)  
 also available flat, 90 degrees, custom

### MAXIMUM DIMENSIONS:

Length 1.280 In.  
 Width .765 In.  
 Height 1.261 In.  
 Plunger Diameter ø.252 In.

### MAXIMUM STROKE:

.500 In. (AC) .400 In. (DC)

## D-22 STANDARD COIL RATING

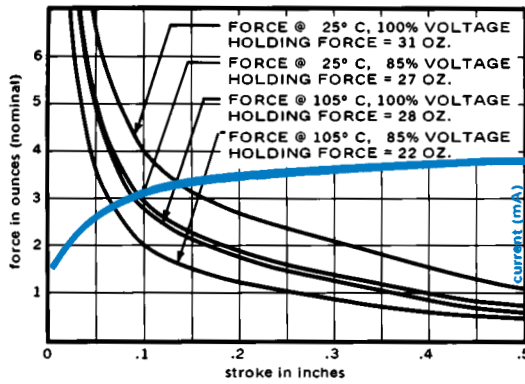
VOLTAGE	CONTINUOUS DUTY	RESISTANCE AC ±10% DC ±5%	INTERMITTENT DUTY	RESISTANCE AC ±10% DC ±5%	PULSE DUTY	RESISTANCE AC ±10% DC ±5%
<b>AC COILS (60 Hz)</b>	<b>P/N</b>		<b>P/N</b>		<b>P/N</b>	
6 VAC	53724-80	2.75 OHMS	53724-86	1.7 OHMS	53724-92	.420 OHMS
12 VAC	53724-81	10.9 OHMS	53724-87	7.0 OHMS	53724-93	1.7 OHMS
24 VAC	53724-82	43.4 OHMS	53724-88	27.4 OHMS	53724-94	27.4 OHMS
120 VAC	53724-84*	1090 OHMS	53724-90	724 OHMS	53724-96	173 OHMS
240 VAC	53724-85	4300 OHMS	53724-91	2880 OHMS	53724-97	724 OHMS
<b>DC COILS</b>						
6 VDC	53723-80	8.7 OHMS	53723-86	3.8 OHMS	53723-92	.91 OHMS
12 VDC	53723-81*	35.0 OHMS	53723-87	14.8 OHMS	53723-93	3.8 OHMS
24 VDC	53723-82*	141 OHMS	53723-88	60 OHMS	53723-94	14.8 OHMS
110 VDC	53723-84	2880 OHMS	53723-90	1274 OHMS	53723-96	302 OHMS

\*Black Items Are Normally Stocked.

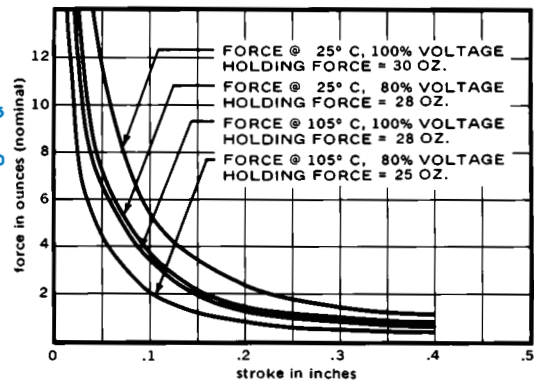
Blue Items Are Non Stock – Minimum Quantity May Be Required.

## D-22 FORCE CURVES (CLASS A)

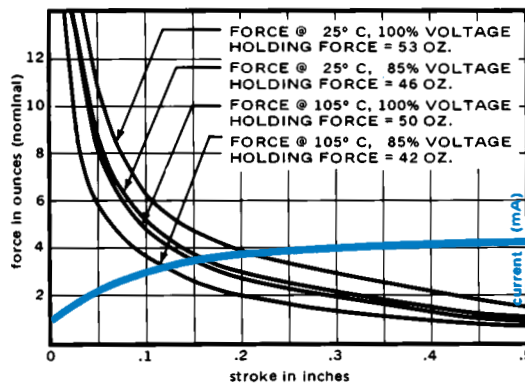
AC CONTINUOUS DUTY - 6.5VA



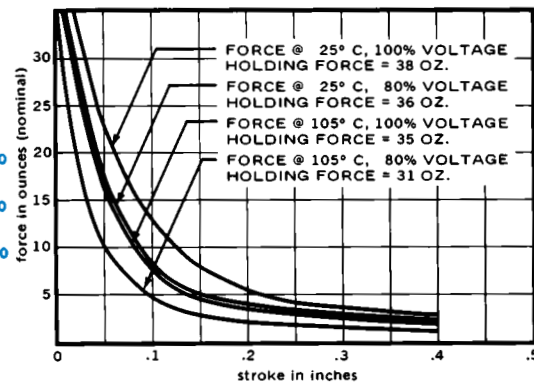
DC CONTINUOUS DUTY - 4.2 WATTS



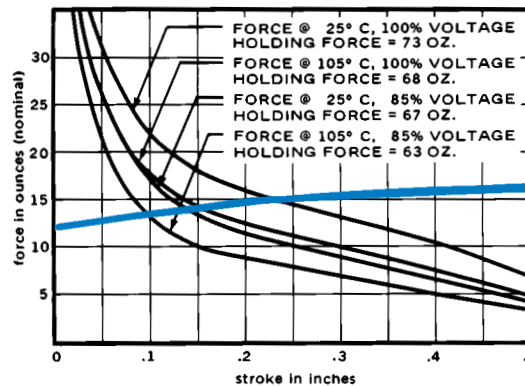
AC INTERMITTENT DUTY - 8.5VA



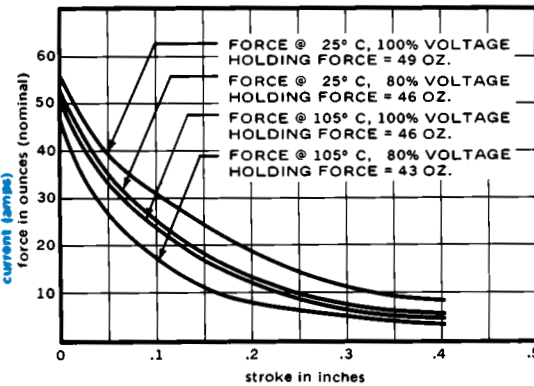
DC INTERMITTENT DUTY - 9.6 WATTS



AC PULSE DUTY - 60VA



DC PULSE DUTY - 40 WATTS



Standard intermittent duty cycle at nominal voltage is 25%, with 3 minutes maximum "ON" and 9 minutes minimum "OFF" in a repetitive cycle. Standard Pulse duty cycle is 10% with 100 milliseconds "ON" and 900 milliseconds "OFF".

NOTE: Approx. 36 sq. in. Heat Sink Required.