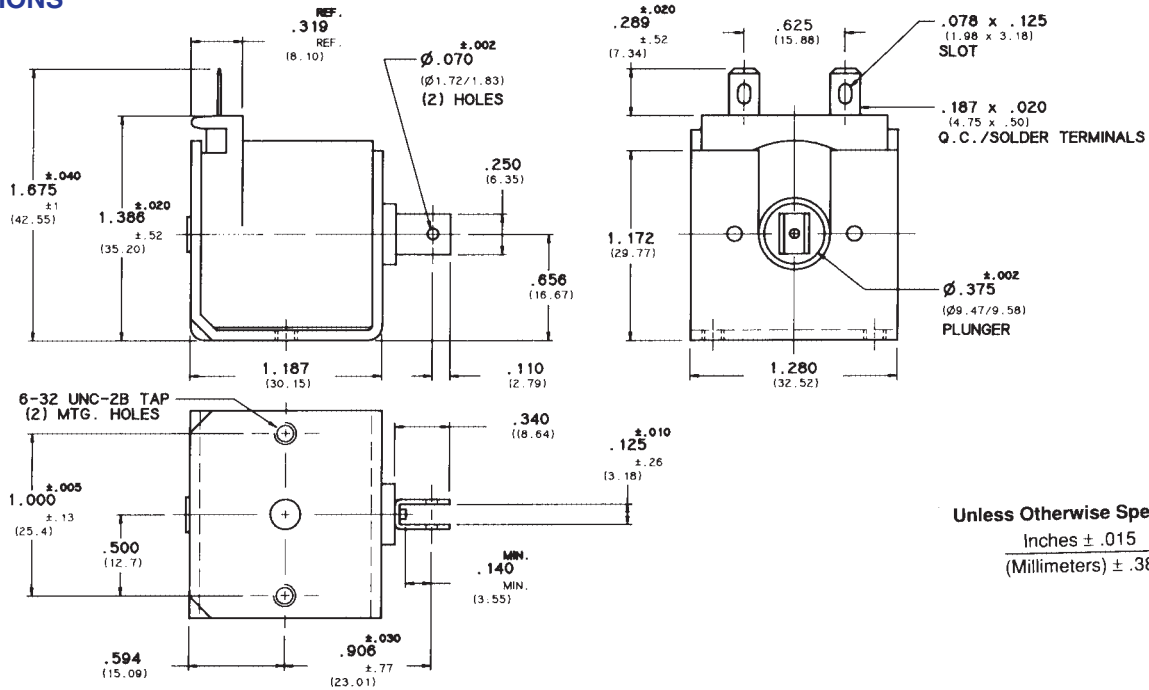


C-8 "C" FRAME SOLENOID

DIMENSIONS



Unless Otherwise Specified:
 Inches $\pm .015$
 (Millimeters) $\pm .38$

COIL TREATMENT:

Plastic Encapsulation.
 Class A Rating (standard)

MAXIMUM OPERATING TEMPERATURE:

Class A – 105°C (221°F)

DIELECTRIC STRENGTH:

30 Volts and Under: 500 VRMS
 Over 30 Volts: 1,000 VRMS plus 2x rated
 voltage for one minute

STANDARD POWER RATINGS:

| DUTY | NOMINAL AC POWER (SEATED) | NOMINAL DC POWER |
|--------------|---------------------------|------------------|
| Continuous | 9.5 VA | 6.5 W |
| Intermittent | 25 VA | 16 W |
| Pulse | 95 VA | 65 W |

UL INFORMATION:

UL File No. E57982 For Continuous Duty
 UL File No. E74443 For Insulation Systems
 S105

WEIGHT:

Plunger – .56 Oz.
 Total – 3.5 Oz.

PLUNGER GUIDE MATERIAL:

Plastic

LIFE EXPECTANCY:

10⁷ Cycles Under Optimum Load Conditions

TERMINATION:

.187 In. Quick-Connect/Solder Lug (standard)
 .250 In. Quick-Connects (optional)
 Wire Leads (optional with tape-wrapped coils)

PLUNGER CONE ANGLE (DC):

60 degrees (standard)
 also available flat, 90 degrees, custom
 Buzz Trimmer (AC) (optional)

MAXIMUM DIMENSIONS:

Length 1.202 In.
 Width 1.295 In.
 Height 1.715 In.
 Plunger Diameter $\phi .377$ In.

MAXIMUM STROKE:

.500 In.

C-8 STANDARD COIL RATING

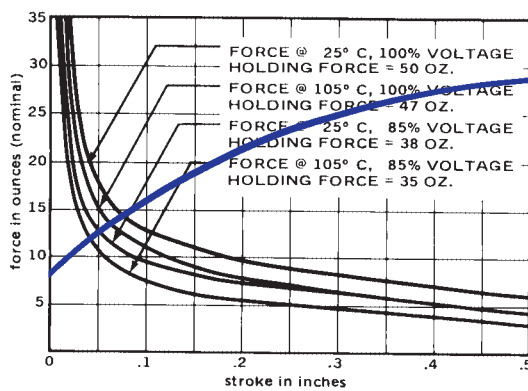
| VOLTAGE | CONTINUOUS DUTY | RESISTANCE AC ±10% DC ±5% | INTERMITTENT DUTY | RESISTANCE AC ±10% DC ±5% | PULSE DUTY | RESISTANCE AC ±10% DC ±5% |
|-------------------------|-----------------|------------------------------|-------------------|------------------------------|------------|------------------------------|
| AC COILS (60 Hz) | P/N | | P/N | | P/N | |
| 6 VAC | 53712-80 | .82 OHMS | 53712-86 | .360 OHMS | 53712-92 | .14 OHMS |
| 12 VAC | 53712-81 | 3.30 OHMS | 53712-87 | 1.44 OHMS | 53712-93 | .570 OHMS |
| 24 VAC | 53712-82 | 13.8 OHMS | 53712-88 | 5.8 OHMS | 53712-94 | 2.25 OHMS |
| 120 VAC | 53712-84 | 346 OHMS | 53712-90 | 151 OHMS | 53712-96 | 60.3 OHMS |
| 240 VAC | 53712-85 | 1400 OHMS | 53712-91 | 614 OHMS | 53712-97 | 242 OHMS |
| DC COILS | | | | | | |
| 6 VDC | 53713-80 | 5.8 OHMS | 53713-86 | 2.25 OHMS | 53713-92 | .570 OHMS |
| 12 VDC | 53713-81 | 23.0 OHMS | 53713-87 | 9.3 OHMS | 53713-93 | 2.25 OHMS |
| 24 VDC | 53713-82 | 93.3 OHMS | 53713-88 | 37.5 OHMS | 53713-94 | 9.3 OHMS |
| 110 VDC | 53713-84 | 2010 OHMS | 53713-90 | 782 OHMS | 53713-96 | 196 OHMS |

*Black Items Are Normally Stocked.

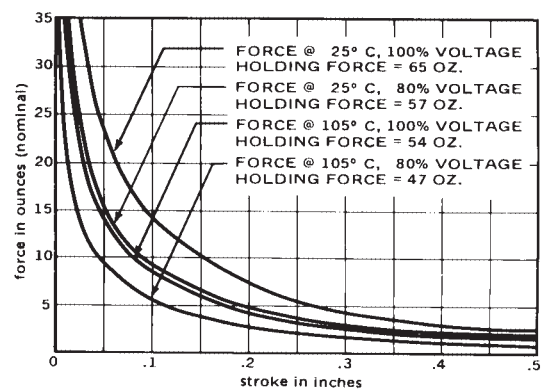
Purple Items Are Non Stock – Minimum Quantity May Be Required.

C-8 FORCE CURVES (CLASS A)

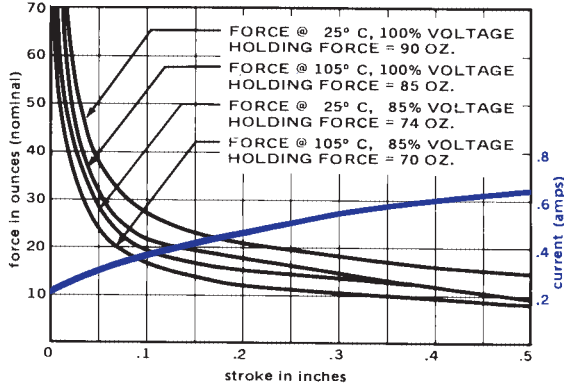
AC CONTINUOUS DUTY - 9.5VA



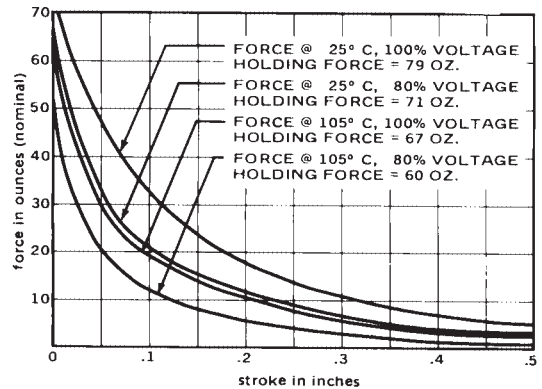
DC CONTINUOUS DUTY - 6.5 WATTS



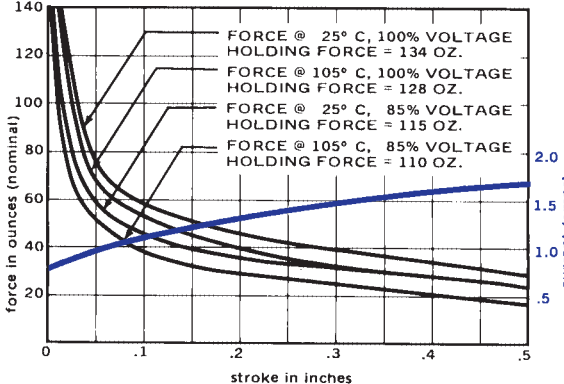
AC INTERMITTENT DUTY - 25VA



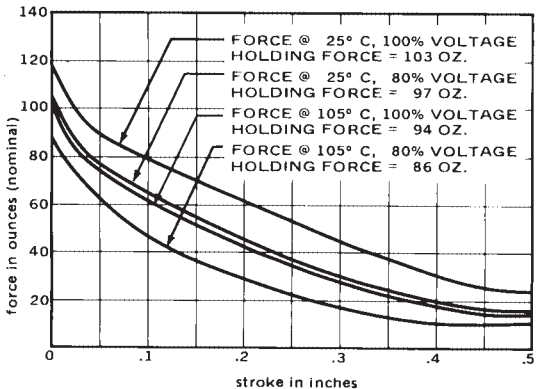
DC INTERMITTENT DUTY - 16 WATTS



AC PULSE DUTY - 95VA



DC PULSE DUTY - 65 WATTS



Standard intermittent duty cycle at nominal voltage is 25%, with 3 minutes maximum "ON" and 9 minutes minimum "OFF" in a repetitive cycle. Standard Pulse duty cycle is 10% with 100 milliseconds "ON" and 900 milliseconds "OFF".