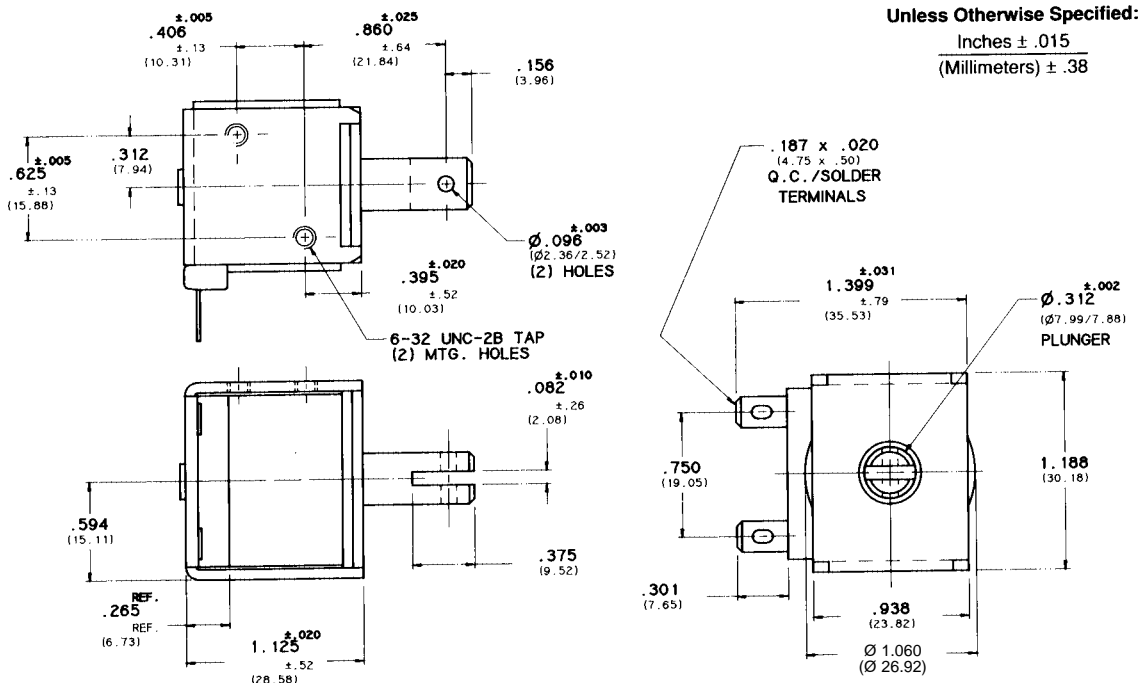


D-28 "D" FRAME SOLENOID

DIMENSIONS



COIL TREATMENT:

Plastic Encapsulation.
 Class A Rating (standard)
 Class F Rating (optional)

MAXIMUM OPERATING TEMPERATURE:

Class A – 105°C (221°F)
 Class F – 155°C (311°F)

DIELECTRIC STRENGTH:

30 Volts and Under: 500 VRMS
 Over 30 Volts: 1,000 VRMS plus 2x rated voltage for one minute

STANDARD POWER RATINGS:

DUTY	NOMINAL AC POWER (SEATED)	NOMINAL DC POWER
Continuous	8 VA	5.5 W
Intermittent	21 VA	11.5 W
Pulse	80 VA	55 W

UL INFORMATION:

UL File No. E57982 For Continuous Duty
 UL File No. E74443 For Insulation Systems
 S105, S130, S130D, S130D1 & S155D

WEIGHT:

Plunger – .48 Oz.
 Total – 3.12 Oz.

PLUNGER GUIDE MATERIAL:

Plastic

LIFE EXPECTANCY:

10^7 Cycles Under Optimum Load Conditions

TERMINATION:

.187 In. Quick-Connect/Solder Lug (standard)
 Wire Leads (optional with tape-wrapped coils)

PLUNGER CONE ANGLE (DC):

60 degrees (standard)
 also available flat, 90 degrees, custom

MAXIMUM DIMENSIONS:

Length 1.145 In.
 Width 1.430 In.
 Height 1.205 In.
 Plunger Diameter \varnothing .315 In.

MAXIMUM STROKE:

.500 In.

D-28 STANDARD COIL RATING

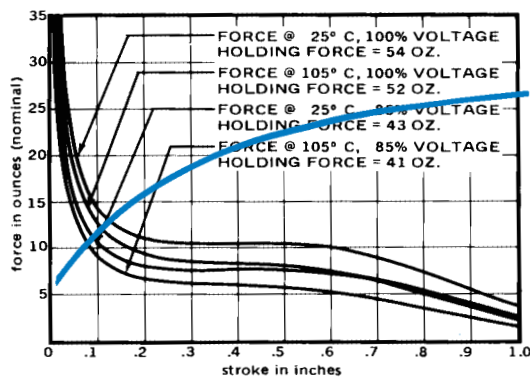
VOLTAGE	CONTINUOUS DUTY	RESISTANCE AC ±10% DC ±5%	INTERMITTENT DUTY	RESISTANCE AC ±10% DC ±5%	PULSE DUTY	RESISTANCE AC ±10% DC ±5%
AC COILS (60 Hz)	P/N		P/N		P/N	
6 VAC	53706-80	1.00 OHMS	53706-86	.54 OHMS	53706-92	.22 OHMS
12 VAC	53706-81	4.05 OHMS	53706-87	2.13 OHMS	53706-93	.90 OHMS
24 VAC	53706-82	16.2 OHMS	53706-88	8.9 OHMS	53706-94	3.7 OHMS
120 VAC	53706-84*	420 OHMS	53706-90*	220 OHMS	53706-96	94.4 OHMS
240 VAC	53706-85	1700 OHMS	53706-91	890 OHMS	53706-97	381 OHMS
DC COILS						
6 VDC	53708-80	6.6 OHMS	53708-86	3.2 OHMS	53708-92	.67 OHMS
12 VDC	53708-81*	27.1 OHMS	53708-87*	12.7 OHMS	53708-93	2.7 OHMS
24 VDC	53708-82*	108 OHMS	53708-88*	51.0 OHMS	53708-94	11 OHMS
110 VDC	53708-84	2250 OHMS	53708-90	1040 OHMS	53708-96	220 OHMS

*Black Items Are Normally Stocked.

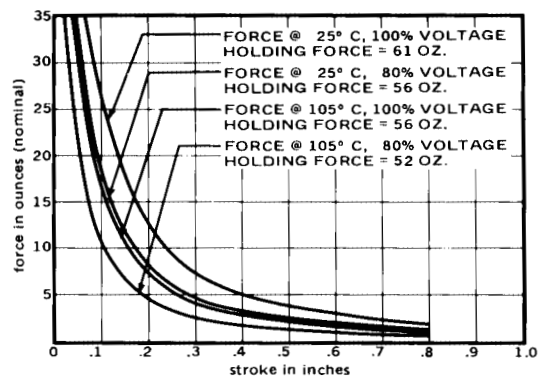
Blue Items Are Non Stock – Minimum Quantity May Be Required.

D-28 FORCE CURVES (CLASS A)

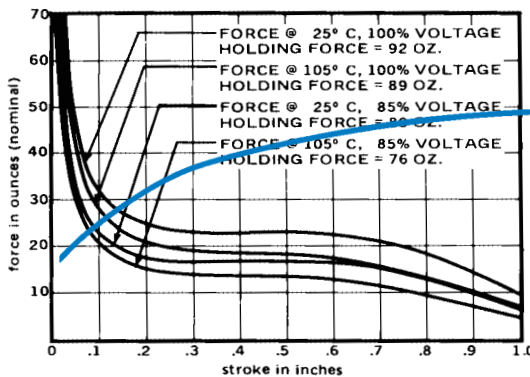
AC CONTINUOUS DUTY - 8VA



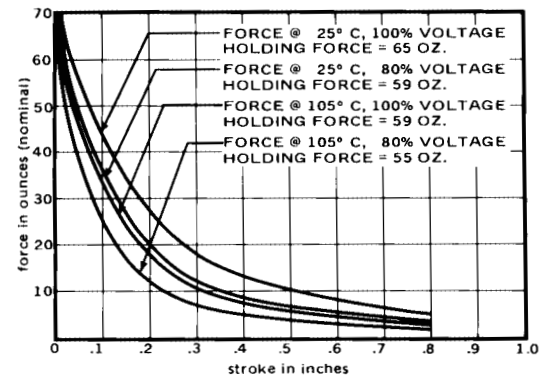
DC CONTINUOUS DUTY - 5.5 WATTS



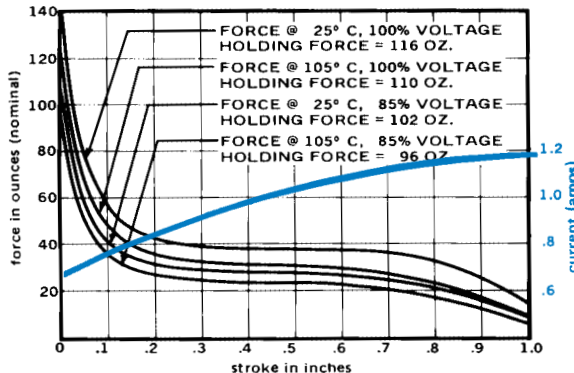
AC INTERMITTENT DUTY - 21VA



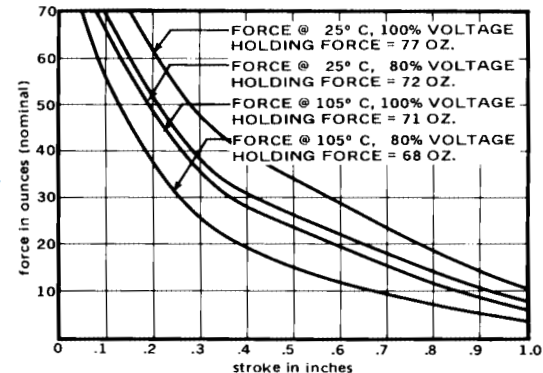
DC INTERMITTENT DUTY - 11.5 WATTS



AC PULSE DUTY - 80VA



DC PULSE DUTY - 55 WATTS



Standard intermittent duty cycle at nominal voltage is 25%, with 3 minutes maximum "ON" and 9 minutes minimum "OFF" in a repetitive cycle. Standard Pulse duty cycle is 10% with 100 milliseconds "ON" and 900 milliseconds "OFF".