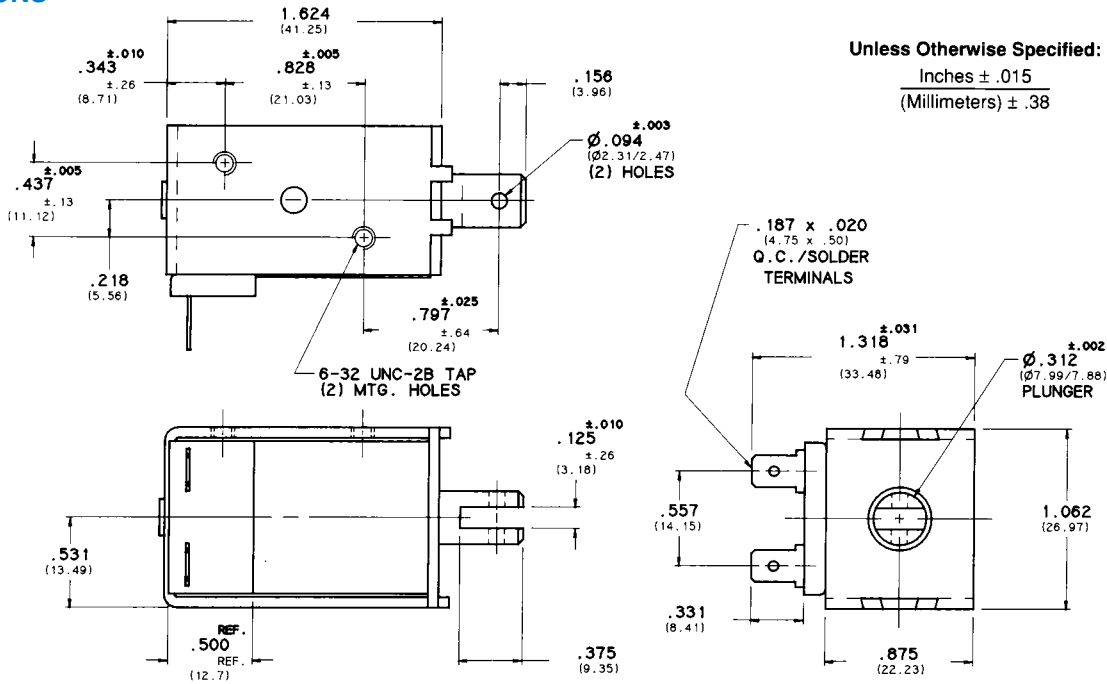




D-17 "D" FRAME SOLENOID

DIMENSIONS



COIL TREATMENT:

Plastic Encapsulation.
 Class A Rating (standard)

MAXIMUM OPERATING TEMPERATURE:

Class A – 105°C (221°F)

DIELECTRIC STRENGTH:

30 Volts and Under: 500 VRMS
 Over 30 Volts: 1,000 VRMS plus 2x rated voltage for one minute

STANDARD POWER RATINGS:

DUTY	NOMINAL AC POWER (SEATED)	NOMINAL DC POWER
Continuous	9.4 VA	6 W
Intermittent	23 VA	14.5 W
Pulse	93 VA	60 W

UL INFORMATION:

UL File No. E57982 For Continuous Duty
 UL File No. E74443 For Insulation Systems
 S105

WEIGHT:

Plunger – .50 Oz.
 Total – 4 Oz.

PLUNGER GUIDE MATERIAL:

Plastic

LIFE EXPECTANCY:

10⁷ Cycles Under Optimum Load Conditions

TERMINATION:

.187 In. Quick-Connect/Solder Lug (standard)
 Wire Leads (optional with tape-wrapped coils)

PLUNGER CONE ANGLE (DC):

60 degrees (standard)
 also available flat, 90 degrees, custom

MAXIMUM DIMENSIONS:

Length 1.639 In.
 Width 1.349 In.
 Height 1.077 In.
 Plunger Diameter ø.315 In.

MAXIMUM STROKE:

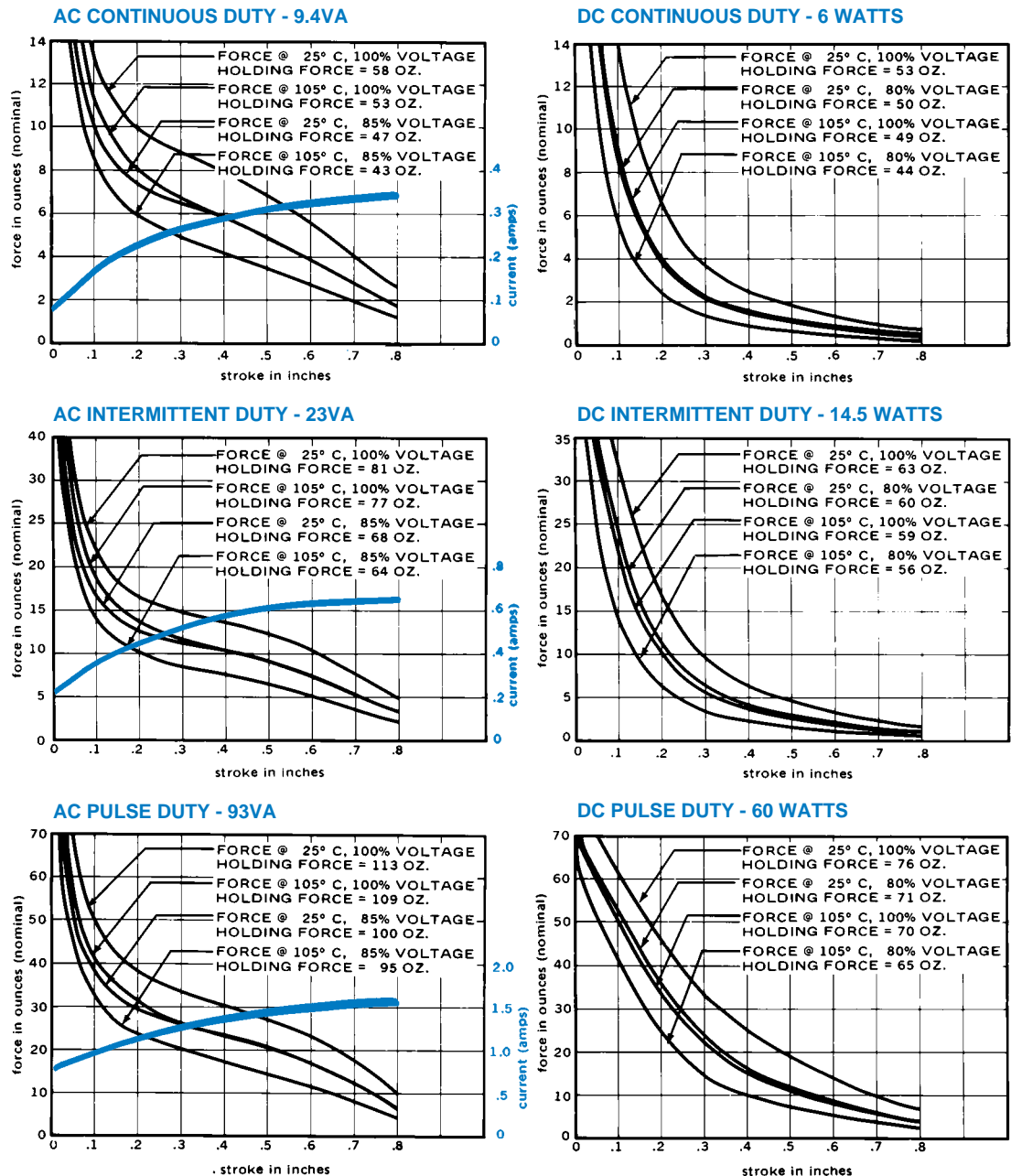
.800 In.

D-17 STANDARD COIL RATING

VOLTAGE	CONTINUOUS DUTY	RESISTANCE AC ±10% DC ±5%	INTERMITTENT DUTY	RESISTANCE AC ±10% DC ±5%	PULSE DUTY	RESISTANCE AC ±10% DC ±5%
AC COILS (60 Hz)	P/N		P/N		P/N	
6 VAC	53701-80	.733 OHMS	53701-86	.41 OHMS	53701-92	.183 OHMS
12 VAC	53701-81	2.95 OHMS	53701-87	1.62 OHMS	53701-93	.733 OHMS
24 VAC	53701-82	12.1 OHMS	53701-88	6.5 OHMS	53701-94	2.95 OHMS
120 VAC	53701-84	303 OHMS	53701-90	169 OHMS	53701-96	74.2 OHMS
240 VAC	53701-85	1220 OHMS	53701-91	673 OHMS	53701-97	303 OHMS
DC COILS						
6 VDC	53700-80	6.1 OHMS	53700-86	2.45 OHMS	53700-92	.60 OHMS
12 VDC	53700-81	24.4 OHMS	53700-87	9.9 OHMS	53700-93	2.45 OHMS
24 VDC	53700-82	98.4 OHMS	53700-88	39.2 OHMS	53700-94	9.9 OHMS
110 VDC	53700-84	1990 OHMS	53700-90	839 OHMS	53700-96	211 OHMS

Non Stock – Minimum Quantity May Be Required.

D-17 FORCE CURVES (CLASS A)



Standard intermittent duty cycle at nominal voltage is 25%, with 3 minutes maximum "ON" and 9 minutes minimum "OFF" in a repetitive cycle. Standard Pulse duty cycle is 10% with 100 milliseconds "ON" and 900 milliseconds "OFF".