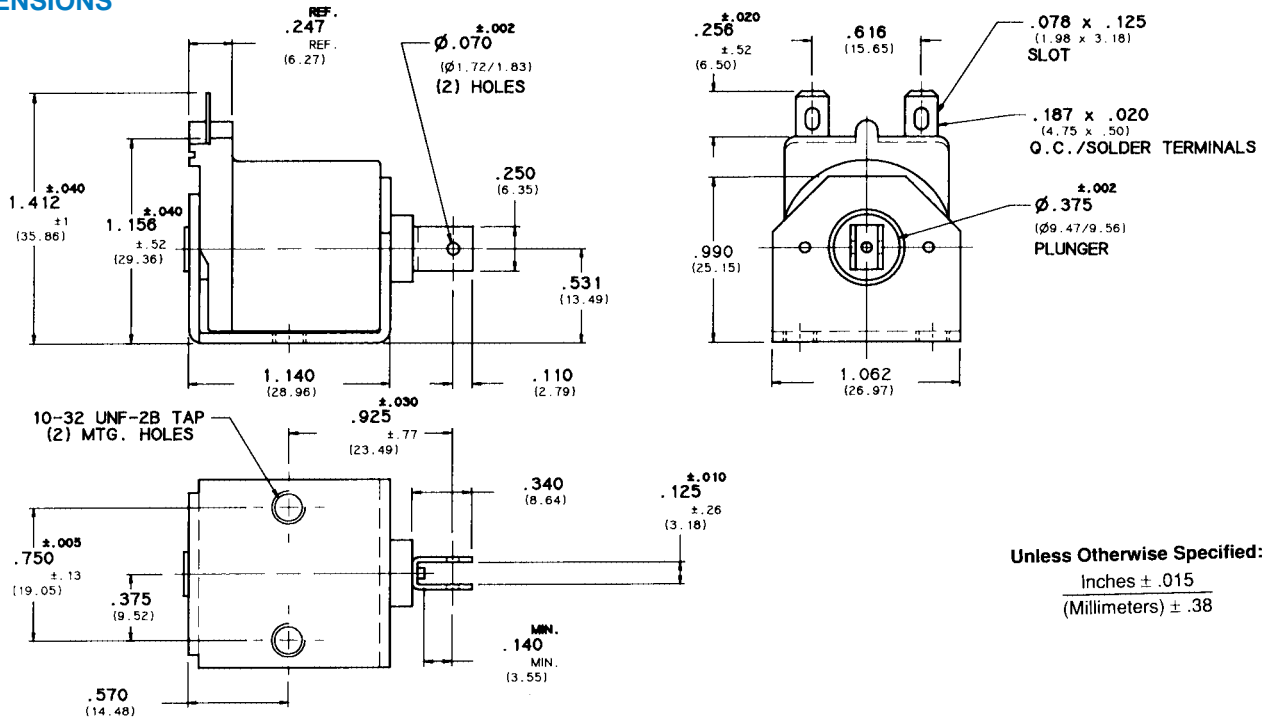




# C-7 "C" FRAME SOLENOID

## DIMENSIONS



Unless Otherwise Specified:  
 Inches ± .015  
 (Millimeters) ± .38

### COIL TREATMENT:

Plastic Encapsulation.  
 Class A Rating (standard)

### MAXIMUM OPERATING TEMPERATURE:

Class A – 105°C (221°F)

### DIELECTRIC STRENGTH:

30 Volts and Under: 500 VRMS  
 Over 30 Volts: 1,000 VRMS plus 2x rated voltage for one minute

### STANDARD POWER RATINGS:

DUTY	NOMINAL AC POWER (SEATED)	NOMINAL DC POWER
Continuous	7.8 VA	5 W
Intermittent	21 VA	11.5 W
Pulse	78 VA	50 W

### UL INFORMATION:

UL File No. E57982 For Continuous Duty  
 UL File No. E74443 For Insulation Systems  
 S105

### WEIGHT:

Plunger – .56 Oz.  
 Total – 2.5 Oz.

### PLUNGER GUIDE MATERIAL:

Plastic

### LIFE EXPECTANCY:

10<sup>7</sup> Cycles Under Optimum Load Conditions

### TERMINATION:

.187 In. Quick-Connect/Solder Lug (standard)  
 Wire Leads (optional with tape-wrapped coils)

### PLUNGER CONE ANGLE (DC):

60 degrees (standard)  
 also available flat, 90 degrees, custom  
 Buzz Trimmer (AC) (optional)

### MAXIMUM DIMENSIONS:

Length 1.155 In.  
 Width 1.077 In.  
 Height 1.452 In.  
 Plunger Diameter Ø.377 In.

### MAXIMUM STROKE:

.500 In.

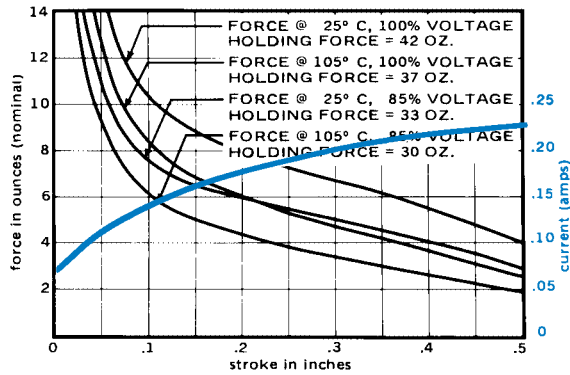
## C-7 STANDARD COIL RATING

VOLTAGE	CONTINUOUS DUTY	RESISTANCE AC ±10% DC ±5%	INTERMITTENT DUTY	RESISTANCE AC ±10% DC ±5%	PULSE DUTY	RESISTANCE AC ±10% DC ±5%
<b>AC COILS (60 Hz)</b>	<b>P/N</b>		<b>P/N</b>		<b>P/N</b>	
6 VAC	53637-80	1.23 OHMS	53638-80	.533 OHMS	53639-80	.193 OHMS
12 VAC	53637-81	4.92 OHMS	53638-81	2.14 OHMS	53639-81	.766 OHMS
24 VAC	53637-83	20.1 OHMS	53638-83	8.81 OHMS	53639-83	3.12 OHMS
120 VAC	53637-94	509 OHMS	53638-94	220 OHMS	53639-94	81.6 OHMS
240 VAC	53637-97	2140 OHMS	53638-97	875 OHMS	53639-97	330 OHMS
<b>DC COILS</b>						
6 VDC	53634-80	7.38 OHMS	53635-80	3.12 OHMS	53636-80	.728 OHMS
12 VDC	53634-81	29.1 OHMS	53635-81	12.6 OHMS	53636-81	2.96 OHMS
24 VDC	53634-83	118 OHMS	53635-83	50.5 OHMS	53636-83	11.5 OHMS
110 VDC	53634-93	2300 OHMS	53635-93	1060 OHMS	53636-93	220 OHMS

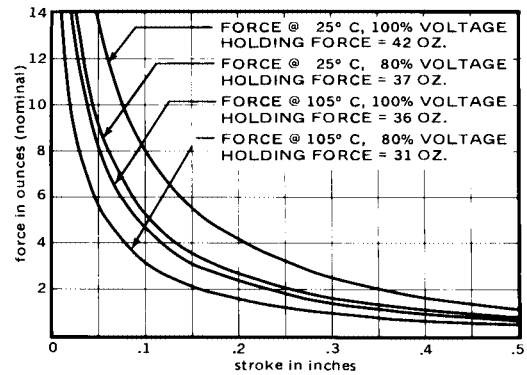
Non Stock – Minimum Quantity May Be Required.

## C-7 FORCE CURVES (CLASS A)

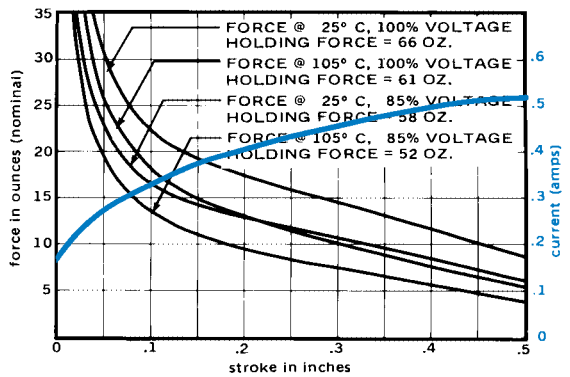
AC CONTINUOUS DUTY - 7.8VA



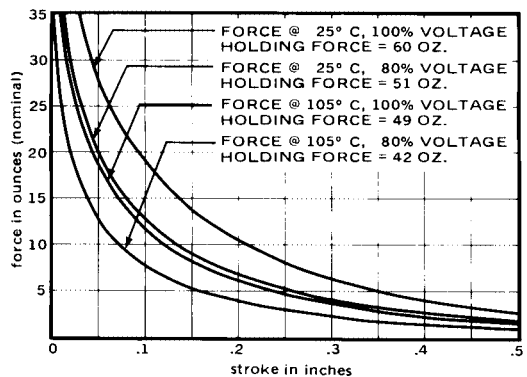
DC CONTINUOUS DUTY - 5 WATTS



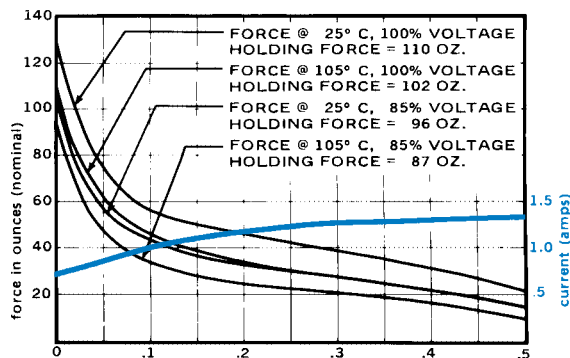
AC INTERMITTENT DUTY - 21VA



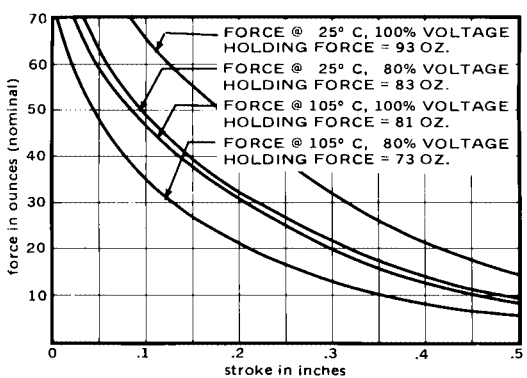
DC INTERMITTENT DUTY - 11.5 WATTS



AC PULSE DUTY - 78VA



DC PULSE DUTY - 50 WATTS



Standard intermittent duty cycle at nominal voltage is 50% with 10 minutes maximum "ON" and 9 minutes minimum "OFF" in a repetitive cycle. Standard Pulse duty cycle is 10% with 100 milliseconds "ON" and 900 milliseconds "OFF".