

52PM8A2J | US2:52PM8A2J

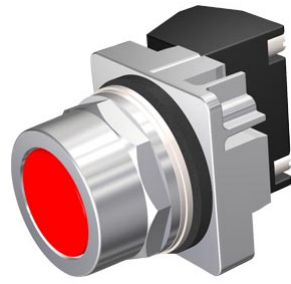


Image similar

30mm Command/52, Chrome Finish Heavy Duty,Watertight/Oiltight Complete Metal Unit Pushbutton Non-Illuminated Flush Button Plastic Cap, Red 2 Position Momentary with 1 N.C. Heavy Duty Contacts, A600/P600 UL Listed, CSA Certified NEMA 1,3,3R,4,4X,12,13 & Automotive Standards

List Price > Show prices

Customer Price > Show prices

Additional Services For this product we can offer Services like Spare Part Delivery/Repair/Exchange. You have currently no rights to enter the Service Web Shop for that.  
> For further information & to order this service, please contact your local Spares&Repair Partner

DataSheet in PDF Download

Service & Support (Manuals, Certificats, FAQs...) Download

> Image gallery and data for M-CAD and E-CAD (1) (1)

Product data Further Product Information

Product	
Article Number (Market Facing Number)	52PM8A2J   US2:52PM8A2J
Product Description	30mm Command/52, Chrome Finish Heavy Duty,Watertight/Oiltight Complete Metal Unit Pushbutton Non-Illuminated Flush Button Plastic Cap, Red 2 Position Momentary with 1 N.C. Heavy Duty Contacts, A600/P600 UL Listed, CSA Certified NEMA 1,3,3R,4,4X,12,13 & Automotive Standards
Product family	> Ordering Data Overview
Product Lifecycle (PLM)	PM300:Active Product
Price data	
Price Group	N65
List Price	> Show prices
Customer Price	> Show prices
Metal Factor	None
Delivery information	
Export Control Regulations	AL : N / ECCN : EAR99
Standard lead time ex-works	5 Day/Days
Net Weight (lb)	0.243 lb
Product Dimensions (W x L x H)	Not available
Packaging Dimension	Not available
Package size unit of measure	in
Quantity Unit	1 Piece
Packaging Quantity	1
Additional Product Information	
EAN	Not available
UPC	887621811686
Commodity Code	8536509035
LKZ_FDB/ CatalogID	CC-IC10
Product Group	4649
Group Code	R711
Country of origin	Mexico
Compliance with the substance restrictions according to RoHS directive	not available
Returnable	Yes
WEEE (2012/19/EU) Take-Back Obligation	No
REACH Art. 33 Duty to inform according to the current list of candidates	> Reach Information

Classifications			
	Version	Classification	
eClass	6	27-37-12-16	
eClass	7.1	27-37-12-16	
eClass	8	27-37-12-16	
eClass	9	27-37-12-16	
eClass	9.1	27-37-12-16	
ETIM	5	EC000225	
ETIM	6	EC000225	
ETIM	7	EC000225	
ETIM	8	EC000225	
IDEA	4	5210	
UNSPSC	15	39-12-22-16	

Buy product  
Quantity  1 Piece

Add to cart

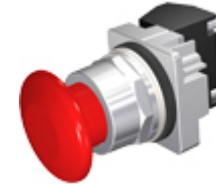
Frequently bought together:



> 52PM8A3K |

US2:52PM8A3K

30mm Command/52, Chrome Finish Heavy Duty,Watertight/Oiltight Complete Metal Unit Pushbutton Non-Illuminated Flush Button Plastic Cap, Green 2 Position Momentary with 1 N.O. Heavy Duty Contacts, A600/P600 UL Listed, CSA Certified NEMA 1,3,3R,4,4X,12,13 & Automotive Standards



> 52PP2W2A |

US2:52PP2W2A

30mm Command/52, Chrome Finish Heavy Duty,Watertight/Oiltight Complete Metal Unit Push-Pull Operator Non-Illuminated Mushroom Head Cap Small 1 3/4" (44.5 mm) Plastic, Red 2 Position Maintained, Pull-to-Release with 1 N.O. - 1 N.C. Heavy Duty Contacts, A600/P600 UL Listed, CSA Certified NEMA 1,3,3R,4,4X,12,13 & Automotive Standards



> 3RB30261QB0 |

3RB30261QB0

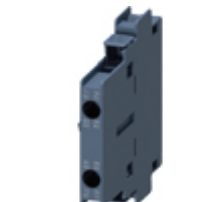
Overload relay 6...25 A Electronic For motor protection Size S0, Class 10E Contactor mounting Main circuit: Screw Auxiliary circuit: Screw Manual-Automatic-Reset



> 3RB30261SB0 |

3RB30261SB0

Overload relay 3...12 A Electronic For motor protection Size S0, Class 10E Contactor mounting Main circuit: Screw Auxiliary circuit: Screw Manual-Automatic-Reset



> 3RH19211EA11 |

3RH19211EA11

first lateral auxiliary switch 1 NO, 1 NC, screw terminal, for contactors 3RT1