

# SPRING & BUTTON CONTACTS

- Economical and reliable contacts are ideal for molded cases with self contained battery compartments
- "Solder tab" design for either wire lead or PC mounting
- Unique spring contacts adjust to variations in battery lengths
- Reliable spring contacts assure low contact resistance and a dependable connection
- Space saving, economical, excellent mechanical construction

**MATERIAL:**

**Plate:** .020 (.51) Steel, Nickel Plate **Spring:** Spring Steel, Nickel Plate

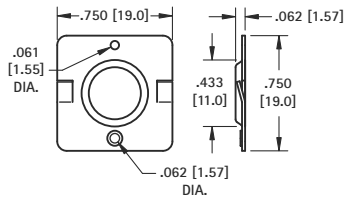


Refer to page 35 for Battery Contact Layout & Mounting Details

BATTERY CONTACTS FOR MOLDED CASES

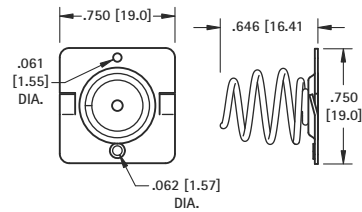
**"C" CELL**

(+) POSITIVE BUTTON



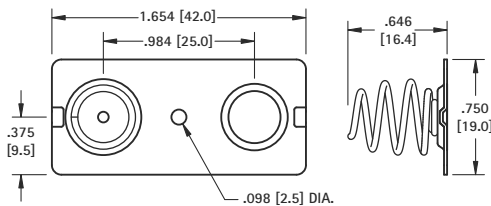
**CAT. NO. 5240**

(-) NEGATIVE SPRING



**CAT. NO. 5241**

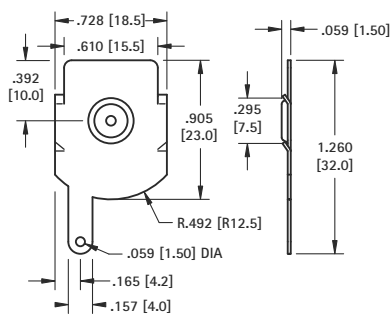
**DUAL CONTACT**



**CAT. NO. 5242**

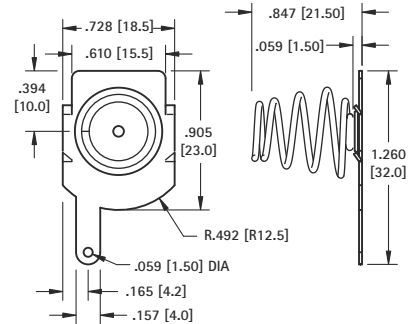
**"D" CELL**

(+) POSITIVE BUTTON



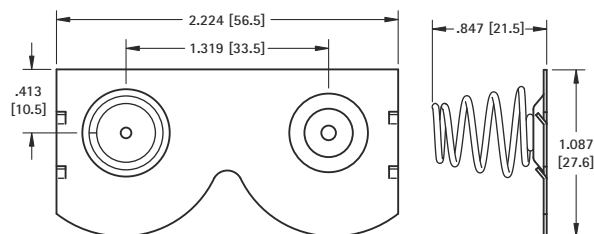
**CAT. NO. 5250**

(-) NEGATIVE SPRING



**CAT. NO. 5251**

**DUAL CONTACT**



**CAT. NO. 5253** Left

**CAT. NO. 5252** Right (Shown)