

SURFACE MOUNT BATTERY CLIPS/CONTACTS

AVAILABLE ON TAPE AND REEL

- "Flow-Hole" SMT solder tail design for increased joint strength
- Tin-Nickel plating is ideal for lead free, high temperature soldering
- Matte Tin Plate for lower soldering temperatures ideal where other temperature sensitive components are being used

Refer to page 32 for Battery Contact Layout & Mounting Details

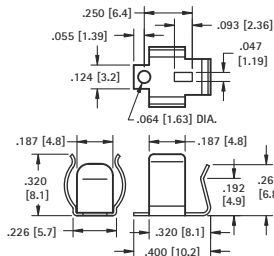
"AAAA" - "A27"



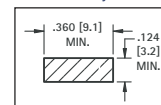
MATERIAL: .010 (.25) Spring Steel

TIN-NICKEL PLATE	MATTE TIN PLATE
CAT. NO. ON TAPE	CAT. NO. ON TAPE
BULK & REEL	BULK & REEL
50	50TR
550	550TR

Tape & Reel Spec's: 24mm wide; 16mm pitch; 13 inch reel, (500 pieces per reel)



Pad Layout



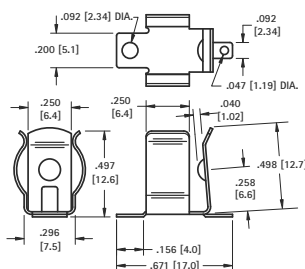
"AAA" - "N" - "A23"



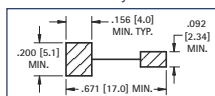
MATERIAL: .010 (.25) Spring Steel

TIN-NICKEL PLATE	MATTE TIN PLATE
CAT. NO. ON TAPE	CAT. NO. ON TAPE
BULK & REEL	BULK & REEL
55	55TR
555	555TR

Tape & Reel Spec's: 32mm wide; 16mm pitch; 13 inch reel, (300 pieces per reel)



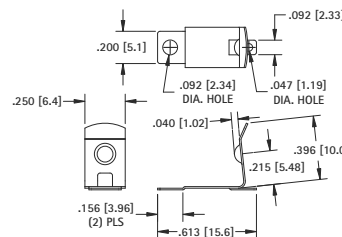
Pad Layout



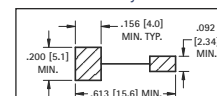
MATERIAL: .010 (.25) Spring Steel

TIN-NICKEL PLATE	MATTE TIN PLATE
CAT. NO. ON TAPE	CAT. NO. ON TAPE
BULK & REEL	BULK & REEL
56	56TR
556	556TR

Tape & Reel Spec's: 32mm wide; 20mm pitch; 13 inch reel, (250 pieces per reel)



Pad Layout



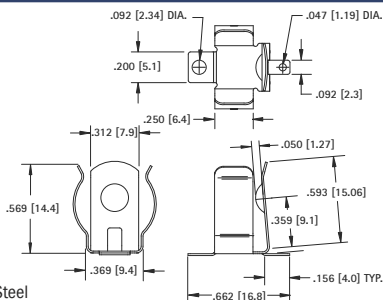
"AA" - "CR2" - "A"



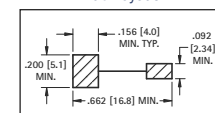
MATERIAL: .012 (.30) Spring Steel

TIN-NICKEL PLATE	MATTE TIN PLATE
CAT. NO. ON TAPE	CAT. NO. ON TAPE
BULK & REEL	BULK & REEL
53	53TR
553	553TR

Tape & Reel Spec's: 32mm wide; 24mm pitch; 13 inch reel, (150 pieces per reel)



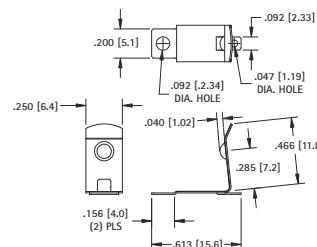
Pad Layout



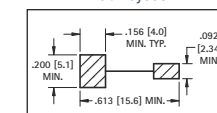
MATERIAL: .010 (.25) Spring Steel

TIN-NICKEL PLATE	MATTE TIN PLATE
CAT. NO. ON TAPE	CAT. NO. ON TAPE
BULK & REEL	BULK & REEL
57	57TR
557	557TR

Tape & Reel Spec's: 32mm wide; 20mm pitch; 13 inch reel, (250 pieces per reel)



Pad Layout



SURFACE MOUNT LEAF-SPRING CONTACTS

AVAILABLE ON TAPE AND REEL

- Economical & reliable contacts are ideal for surface mount applications
- Unique spring tension contacts adjust to variations in battery length
- Reliable spring tension contacts assure low contact resistance
- SMT solder tail with "flow-hole" design for increased joint strength

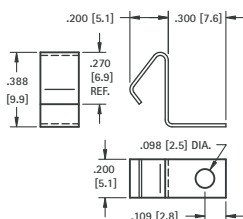
"AAA" - "AAAA" - "12V" - "N"



MATERIAL: .010 (.25) Spring Steel

TIN-NICKEL PLATE	MATTE TIN PLATE
CAT. NO. ON TAPE	CAT. NO. ON TAPE
BULK & REEL	BULK & REEL
5230	5230TR
5330	5330TR

Tape and Reel Spec's: 24mm wide; 12mm pitch; 13 inch reel (400 pieces per reel)



"AA" - "CR2" - "A" - "9V"



MATERIAL: .010 (.25) Spring Steel

TIN-NICKEL PLATE	MATTE TIN PLATE
CAT. NO. ON TAPE	CAT. NO. ON TAPE
BULK & REEL	BULK & REEL
5231	5231TR
5331	5331TR

Tape and Reel Spec's: 32mm wide; 16mm pitch; 13 inch reel (250 pieces per reel)

