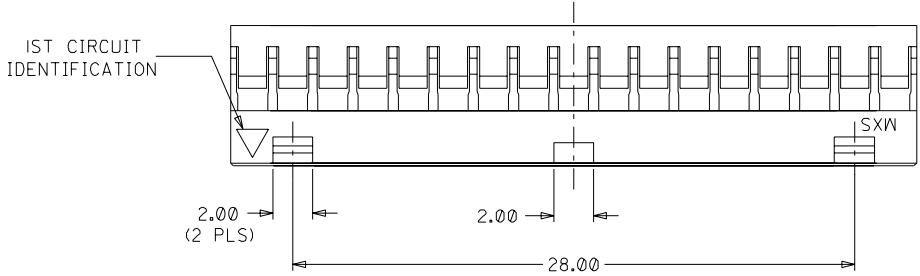
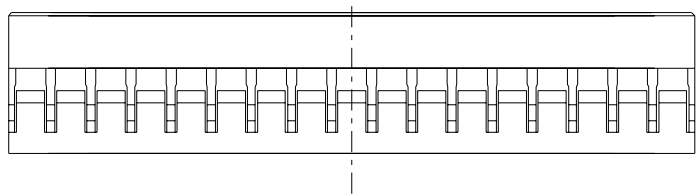
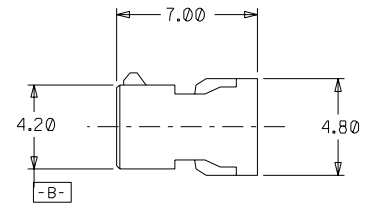
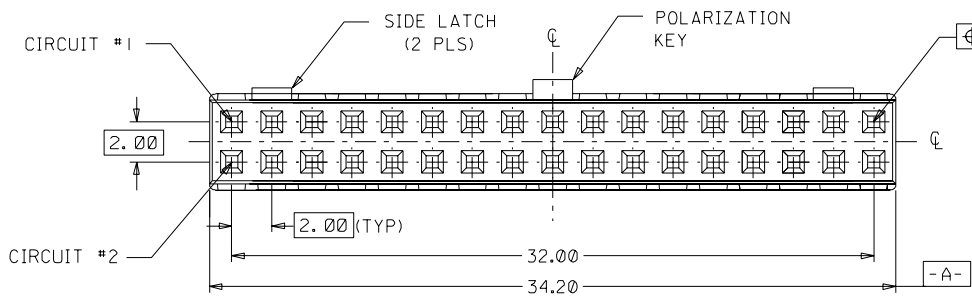


PART NO.	CKT SIZE
51110-3451	34



THIS DOCUMENT IS RESTRICTED FOR DELPHI AUTOMOTIVE SYSTEMS ONLY



NOTES:

1. MATERIAL: GLASS-FILLED POLYESTER UL RATED 94V-0
COLOR: BLACK.
2. PART TO BE USED WITH CRIMP TERMINAL
PART NUMBER 50394-8***.
3. APPLICABLE WIRE RANGE : AWG #24 - #30.
4. WIRE INSULATION RANGE : DIAMETER 1.40MM
MAXIMUM.

EC NO. S2001-0365 DRAWN: G.R. XIE 010613 CHK: APPR:	QUALITY SYMBOLS MAJOR CRITICAL	GENERAL TOLERANCES: (UNLESS SPECIFIED)		SCALE NTS	DESIGN UNITS <input checked="" type="checkbox"/> mm <input type="checkbox"/> INCH	THIRD ANGLE PROJECTION	DIMENSIONS: <input type="checkbox"/> mm <input type="checkbox"/> INCH <input checked="" type="checkbox"/> mm ONLY	SHT	REV	
		4 PLACES	±0.--	±.	DRAWN BY & DATE G.R. XIE 010613	TITLE: 2 MM GRID, WIRE-TO-BOARD CONNECTOR, CRIMP RECEPTACLE HOUSING				
		3 PLACES	±0.--	±.	CHECKED BY & DATE	MOLEX INCORPORATED				
		2 PLACES	±0.20	±.	APPROVED BY & DATE	CAD FILENAME	MATERIAL NO. SEE NOTES	DRAWING NO. RSD-51110-3451	SHEET NO. 1 OF 1	
A	REV	ANGULAR: ± 3 °		THIS DRAWING CONTAINS INFORMATION THAT IS PROPRIETARY TO MOLEX INCORPORATED AND SHOULD NOT BE USED WITHOUT WRITTEN PERMISSION.					SIZE A3	