

**PLEASE CHECK WWW.MOLEX.COM FOR LATEST PART INFORMATION**

**Part Number:** [5013300834](#)  
**Status:** **Active**  
**Overview:** Pico-Clasp Wire-to-Board Connectors  
**Description:** 1.00mm Pitch, Pico-Clasp Receptacle Crimp Housing, Single Row, Positive Lock, 8 Circuits, Blue

**Documents:**

<a href="#">Drawing (PDF)</a>	<a href="#">Application Specification 5013300000-AS-000 (PDF)</a>
<a href="#">Product Specification 5013300000-PS-001 (PDF)</a>	<a href="#">Packaging Specification SPK-501330-001-001 (PDF)</a>
<a href="#">Product Specification 5013301000-PS-001 (PDF)</a>	<a href="#">RoHS Certificate of Compliance (PDF)</a>

**Application tooling part link**

Application Tooling Part Link 63813-1700

**General**

Product Family	Crimp Housings
Series	<a href="#">501330</a>
Application	Signal, Wire-to-Board
Overview	<a href="#">Pico-Clasp Wire-to-Board Connectors</a>
Product Name	Pico-Clasp
UPC	800756912714

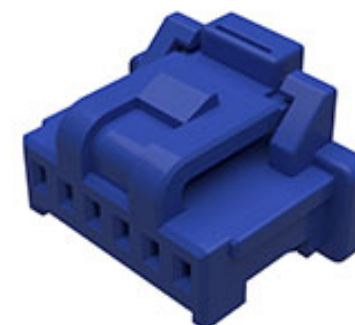
**Physical**

Circuits (maximum)	8
Color - Resin	Blue
Gender	Receptacle
Glow-Wire Capable	No
Keying to Mating Part	None
Lock to Mating Part	Yes
Material - Resin	Nylon
Net Weight	75.500/mg
Number of Rows	1
Packaging Type	Bag
Panel Mount	No
Pitch - Mating Interface	1.00mm
Pitch - Termination Interface	1.00mm
Polarized to Mating Part	Yes
Stackable	No
Temperature Range - Operating	-40° to +105°C

**Material Info**

**Reference - Drawing Numbers**

Application Specification	5013300000-AS-000
Packaging Specification	SPK-501330-001-001
Product Specification	5013300000-PS-001, 5013301000-PS-001
Sales Drawing	SD-501330-002-001



Series image - Reference only

**EU ELV**

**Not Relevant**

**EU RoHS**

**Compliant**

**REACH SVHC**

Not Contained Per -  
D(2020)9139-DC (19  
Jan 2021)

**Halogen-Free**

**Status**

**Low-Halogen**

For more information, please visit [Contact US](#)

China ROHS

ELV

RoHS Phthalates

**China RoHS**

Green Image

Not Relevant

Not Contained

**Search Parts in this Series**

[501330](#) Series

**Mates With**

[501331](#) , [203556](#) , [203557](#) Vertical PCB Header  
Link:[501568](#) , [203558](#) , [203559](#)  
Right Angle PCB Header

**Use With**

[501334](#) Tin Crimp Terminal  
[501193](#) Gold Crimp Terminal

**Application Tooling | FAQ**

*Tooling specifications and manuals are found by selecting the products below. Crimp Height Specifications are then contained in the Application Tooling Specification document.*

**Global**

<b>Description</b>	<b>Product #</b>
--------------------	------------------

Extraction Tool for Pico-Clasp Wire-to-Board Terminals, 28-32 AWG	<a href="#">638131700</a>
---	---------------------------

This document was generated on 02/20/2021

**PLEASE CHECK [WWW.MOLEX.COM](http://WWW.MOLEX.COM) FOR LATEST PART INFORMATION**