



D-FRAME SOLENOID

Two position linear solenoid with D-frame construction.

Features

- Balance of cost and performance
- AC solenoids and DC solenoids available
- UL approval on many models



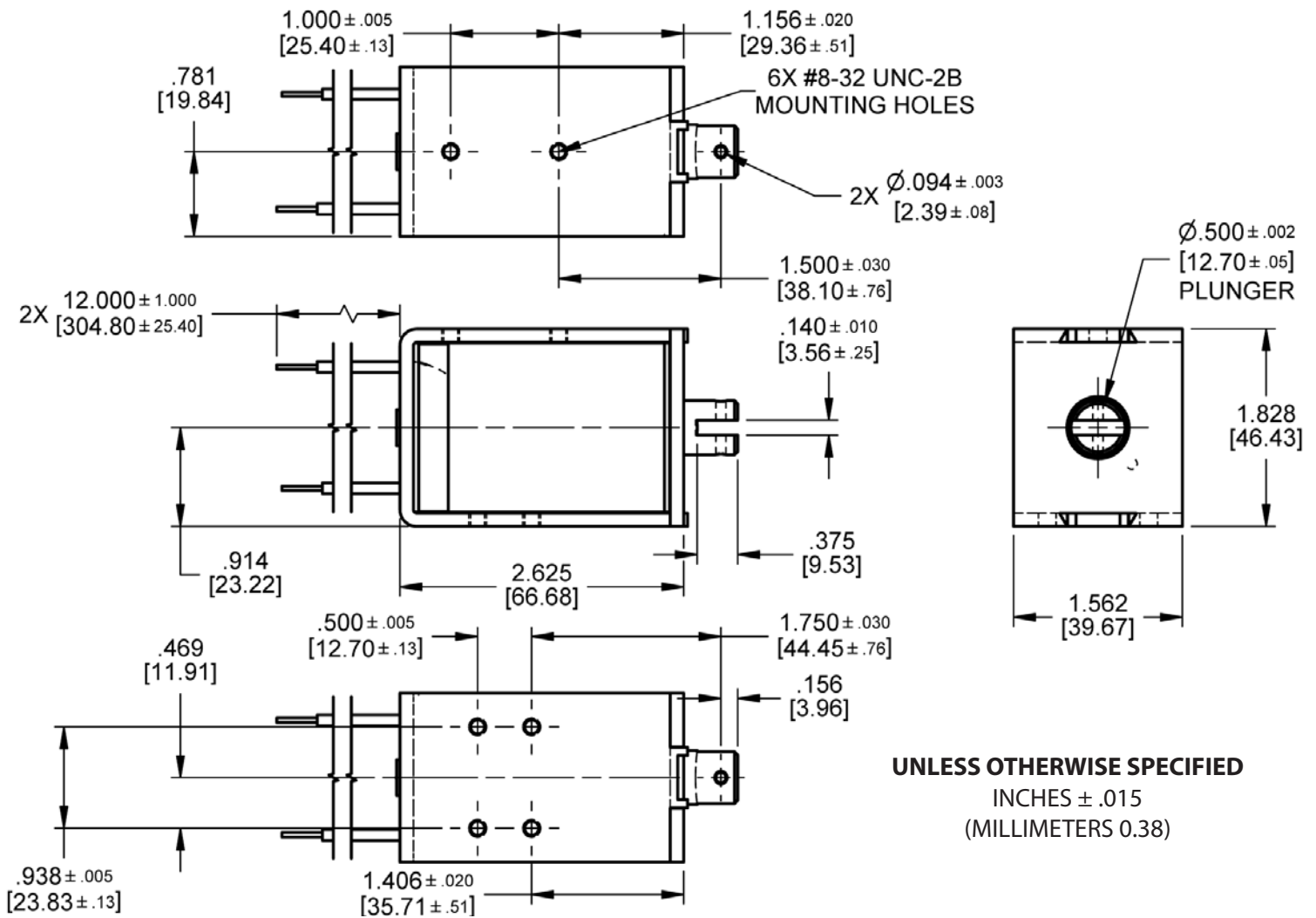
Electrical Specifications	
Coil Voltages	6, 12, 24, 110 VDC
Coil Power	13 Watts Continuous, 48 Watts Intermittent, 130 Watts Pulse
Coil Termination	Wire leads (standard)
Duty Cycle	Continuous, intermittent and pulse duty available (see standard part numbers on page 4)
Coil Treatment	Tape wrapped
Insulation Class	Class A Rating - 105°C (221°F) Max. (standard) Class B Rating - 130°C (266°F) Max. (optional)
Dielectric Strength	30 Volts and Under: 500 VRMS Over 30 Volts: 1000 VRMS plus 2X rated voltage for 1 minute
Mechanical Specifications	
Size	2.625" (L) x 1.562" (W) x 1.828" (H) (See page 2 for dimensional drawing)
Forces	See force curves on page 3
Plunger Diameter	0.500"
Plunger Guide Material	Plastic
Mounting	6X #8-32 UNC-2B Mounting Holes
Weight	Plunger - 1.92 oz., Total - 19 oz.
Life Expectancy	250,000 Cycles (Dependent on load conditions)
Agency Approval	
	UL File No. E57982 For Continuous Duty UL File No. E74443 For Insulation Systems S105, S130

All dimensions in Inches

D-70

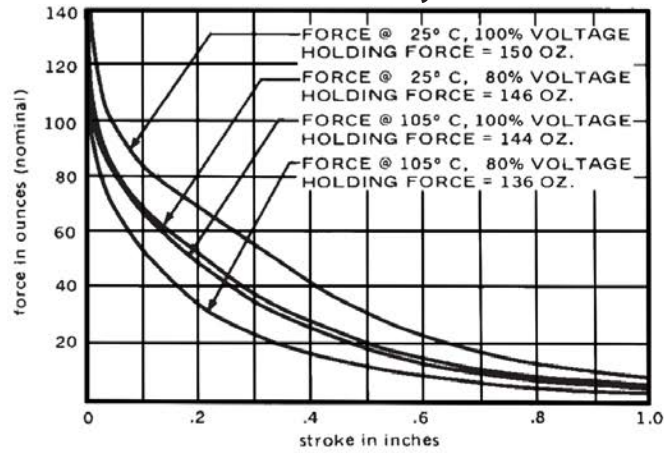
Dimensional View

Units: Inches [mm]

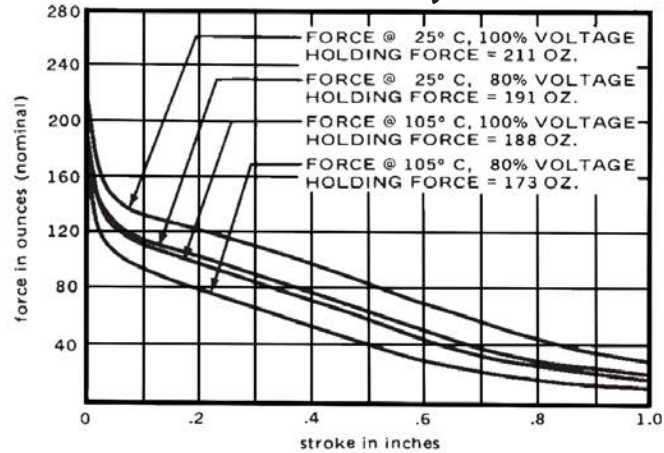


Force Curves

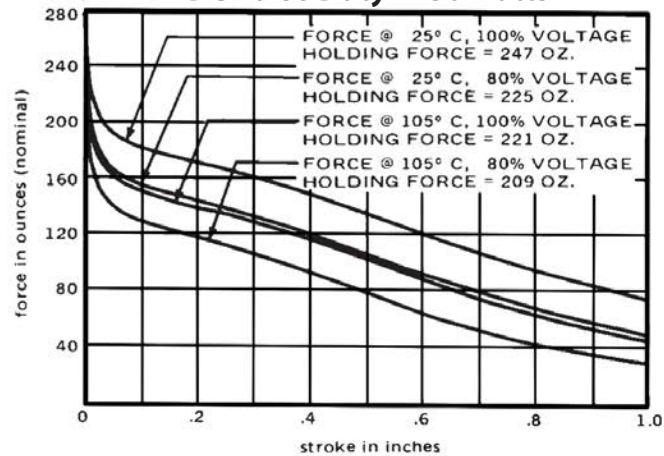
DC Continuous Duty - 13 Watts



DC Intermittent Duty - 48 Watts



DC Pulse Duty - 130 Watts



Standard intermittent duty cycle at nominal voltage is 25%, with three (3) minutes maximum "ON" and nine (9) minutes minimum "OFF" in a repetitive cycle. Standard Pulse duty cycle is 10% with 100 milliseconds "ON" and 900 milliseconds "OFF".

NOTE: Approx 36 sq. in. Heat Sink Required

Standard Part Numbers

Parts No.	Voltage	Duty Cycle	Power	Resistance (Ohms)	Operation	Typical Force (oz). 100% Voltage, 77° F, Stroke @				
						0.000"	0.125"	0.250"	0.500"	0.750"
50046-80	6 VDC	Continuous	13 Watts	2.75	Pull	150	79	62	30	15
50046-81*	12 VDC			11						
50046-83*	24 VDC			44.3						
50046-93*	110 VDC			940						
50031-80	6 VDC	Intermittent	48 Watts	0.75	Pull	211	130	112	82	50
50031-81*	12 VDC			3.0						
50031-83*	24 VDC			12.0						
50031-93*	110 VDC			254						
53714-81	12 VDC	Pulse	130 Watts	1.1	Pull	247	180	165	135	100
53714-83	24 VDC			4.5						
53714-93	110 VDC			92						

(*) Normally Stocked

Non stocked items require a minimum order