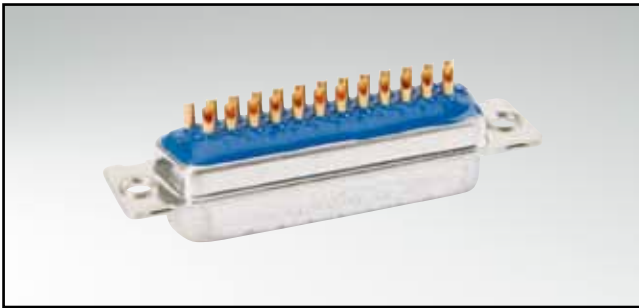


D-SUB STANDARD – IP67

Solder cup – Precision machined contacts – For hood Assembly –
For wire size AWG 20

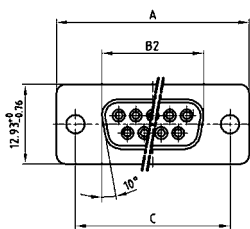


RoHS compliant - CSA listed, File No.LR115000-1 UL listed, File No. E202784

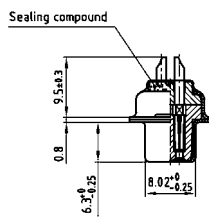
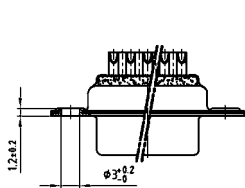
DESCRIPTION

- Suitable for wire size **AWG 20**
- Mounting style:
with through-hole, Ø .118" / 3.0 mm
- Quality class 3 (also available in quality class 1)
- Shell: Brass tin plated (stainless steel available on request)

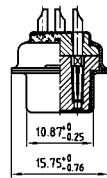
SOCKET CONNECTOR



No. of pos.	A +0.76	B2 -0.25	C
09	31.19	16.46	25.00 ^{+0.12} / _{-0.13}
15	39.52	24.79	33.30 ^{+0.15} / _{-0.10}
25	53.42	38.50	47.04 ^{+0.13} / _{-0.10}
37	69.70	54.96	63.50 ^{+0.13} / _{-0.10}
50	67.31	52.55	61.10 ^{+0.14} / _{-0.11}

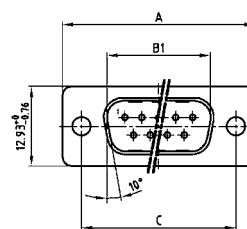


9-37 pos.

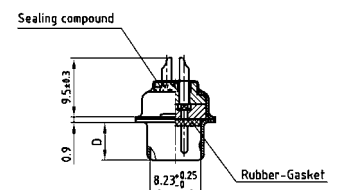
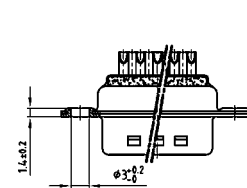


50 pos.

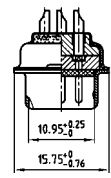
PLUG CONNECTOR



No. of pos.	A +0.76	B1 +0.25	C
09	31.19	16.79	25.00 ^{+0.12} / _{-0.13}
15	39.52	25.12	33.30 ^{+0.15} / _{-0.10}
25	53.42	38.84	47.04 ^{+0.13} / _{-0.10}
37	69.70	55.30	63.50 ^{+0.13} / _{-0.10}
50	67.31	52.68	61.10 ^{+0.14} / _{-0.11}



9-37 pos.



50 pos.

ORDER DATA

SOCKET CONNECTOR		
No. of pos.	Mounting style	Part Number
09	Through-hole	4 STD09SAM99A10 X
15	Through-hole	4 STD15SAM99A10 X
25	Through-hole	4 STD25SAM99A10 X
37	Through-hole	4 STD37SAM99A10 X
50	Through-hole	4 STD50SAM99A10 X

PLUG CONNECTOR		
No. of pos.	Mounting style	Part Number
09	Through-hole	4 STD09PAM99A10 X
15	Through-hole	4 STD15PAM99A10 X
25	Through-hole	4 STD25PAM99A10 X
37	Through-hole	4 STD37PAM99A10 X
50	Through-hole	4 STD50PAM99A10 X