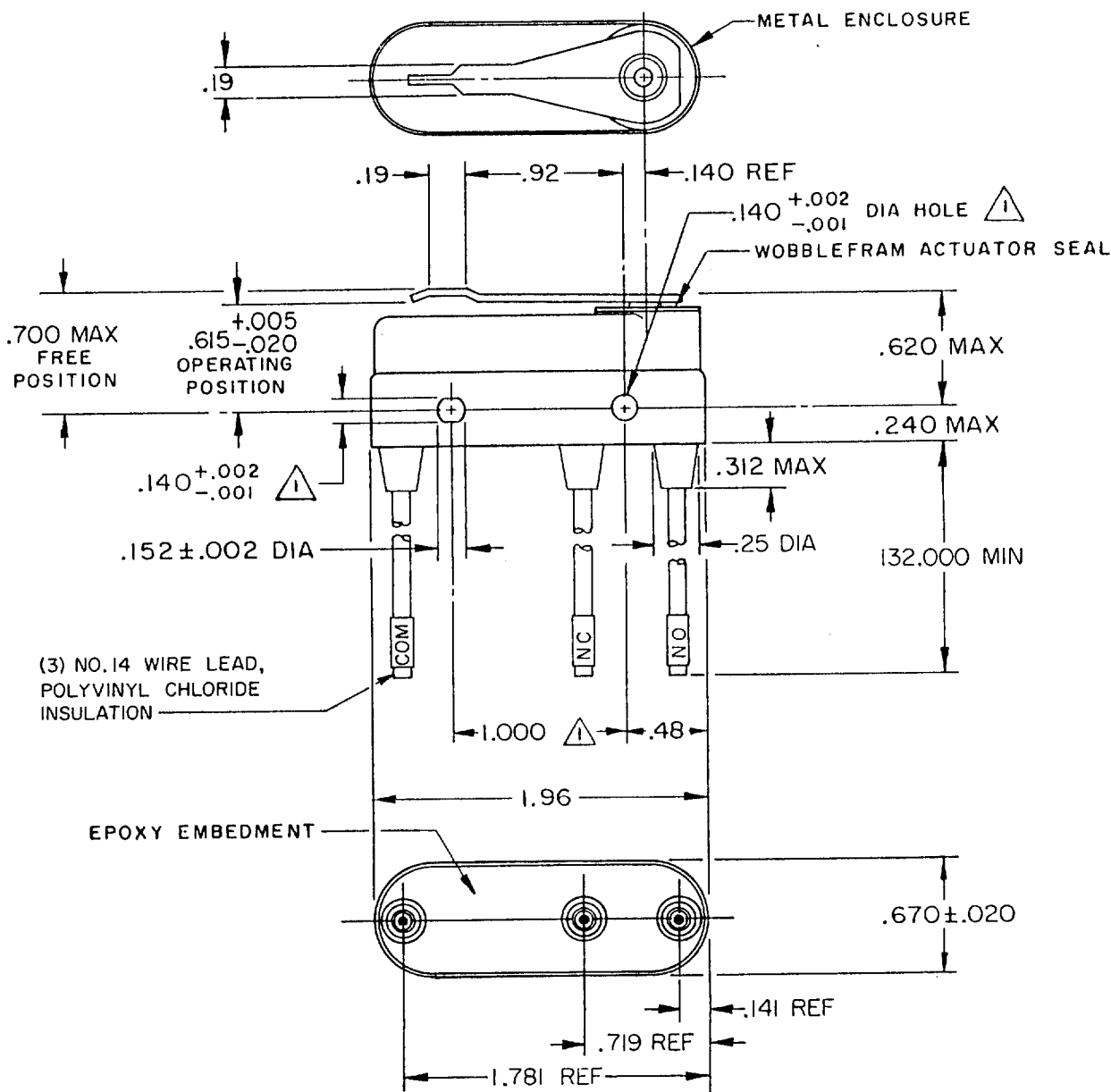


MICRO SWITCH

FREEPORT ILLINOIS, U.S.A
A DIVISION OF HONEYWELL
FED. MFG. CODE 81929

SWITCH - BASIC

CATALOG LISTING
4HS203



- NOTE -
- ① MOUNTING HOLES WILL ACCEPT PINS OR SCREWS OF .139 MAX DIA ON 1.000 ± .002 CENTERS
 - ② CIRCUIT IDENTIFICATION PER END USE AS BASIC (HELD ACTUATED) IN EXH-AR33
 - ③ FOR USE IN AMBIENT TEMPERATURE RANGE FROM MINUS 65° F TO PLUS 180° F
 - ④ WEIGHT OF SWITCH ONLY IS 1.5 OZ, MAX WEIGHT OF CONDUCTOR GROUP ONLY IS 0.7 OZ MAX PER FOOT

THIS DRAWING COVERS A PROPRIETARY ITEM AND IS THE PROPERTY OF MICRO SWITCH, A DIVISION OF HONEYWELL. THIS DRAWING IS NOT TO BE COPIED OR USED WITHOUT THE APPROVAL OF MICRO SWITCH.

CHARACTERISTICS

OPERATING FORCE ----- 10-22 OZ
RELEASE FORCE ----- 4 OZ MIN
PRETRAVEL ----- .065 MAX
DIFFERENTIAL TRAVEL ----- .020 MAX
OVERTRAVEL ----- .010 MIN

ELECTRICAL DATA

CONTACT ARRANGEMENT S P D T		
LINE VOLTAGE	INDUCTIVE LOAD	RESISTIVE LOAD
28 VDC (SEA LEVEL-100,000 FT)	8 AMP	20 AMP
125 VAC (SEA LEVEL-70,000 FT)	1 AMP	.5 AMP

SCALE FULL

DO NOT SCALE PRINT

UNLESS OTHERWISE NOTED
DIMENSIONS ARE IN INCHES
TOLERANCES ARE:
ONE PLACE (.0) ± .030
TWO PLACE (.00) ± .015
THREE PLACE (.000) ± .005
ANGLES ±

L 277 1A-125VAC, 5A-28VDC



WEIGHT ④

4HS203

PAGE 1 OF 1

REPLACES

RELEASE NO. PR-1329

CHECK

70

20

GLR

CHECK

70

20

LSD

CHECK

70

JUL

SRH

DRAWING NUMBER

8

ISSUE

REVISIONS

A	CO29829	OMW	27 DEC 71
B	CO50997	CJH	6 MAR 82
C	CO 55162	MAM	10 DEC 85
D	CO 62736	MAM	15 MAR 88
E	CO61043	TSK	29 AUG 88
F	CO 75625	JDB	15 JULY 93
G	CO-94122	TSM	17 MAR 99

FO-50378-1A
FORMTEK

DRAWN