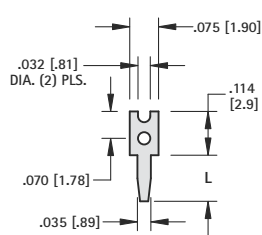


# PC TEST POINTS - SLOTTED & LOOP TYPES



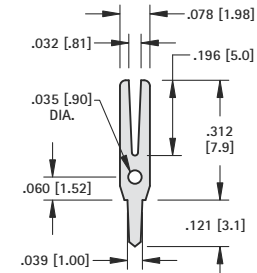
- Low profile, space saving designs for dense packaging
- Wide variety of configurations to suit most applications
- Safe, practical, economical replacement for wire-wrap posts
- Easy mount design, ideal for wave soldering
- Re-fit PC boards without need for re-design
- Provides easy access for production testing and field service troubleshooting
- Positive grip when using J hooks, EZ hooks, grabbers, clips, tips and probes
- Custom test point terminals can be manufactured to your specifications
- Other platings and materials available upon request

**MATERIAL:** Brass, Tin Plate



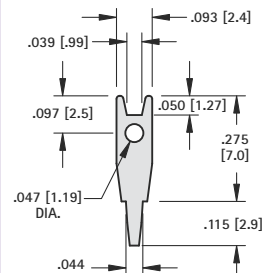
**MATERIAL:** .025 (.64) Brass

CAT. NO.	L
1030	.120 (3.0)
1031	.156 (4.0)



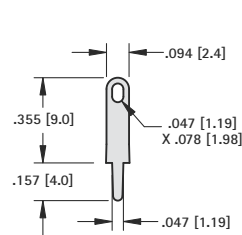
**MATERIAL:** .016 (.41) Brass

**CAT. NO. 1037**



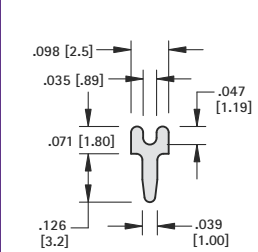
**MATERIAL:** .025 (.64) Brass

**CAT. NO. 1036**



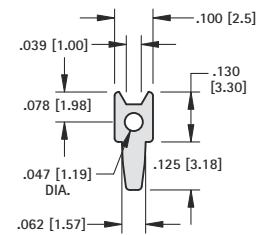
**MATERIAL:** .020 (.51) Brass

**CAT. NO. 4953**



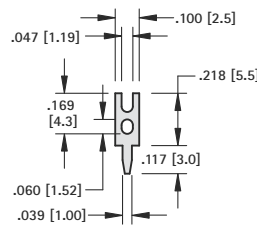
**MATERIAL:** .025 (.64) Brass

**CAT. NO. 4950**



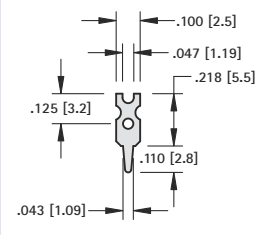
**MATERIAL:** .024 (.64) Brass

**CAT. NO. 1032**



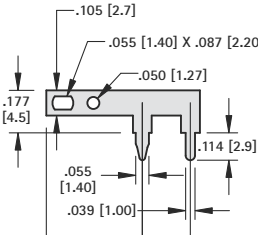
**MATERIAL:** .020 (.51) Brass

**CAT. NO. 1035**



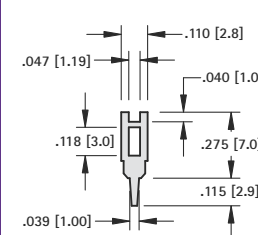
**MATERIAL:** .025 (.64) Brass

**CAT. NO. 1034**



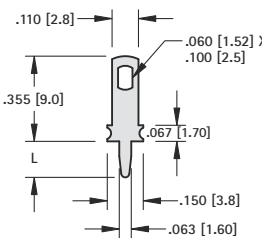
**MATERIAL:** .025 (.64) Brass

**CAT. NO. 1045**



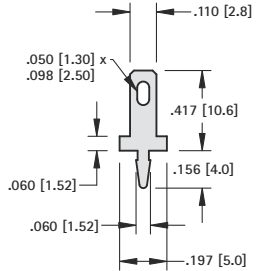
**MATERIAL:** .025 (.64) Brass

**CAT. NO. 1040**



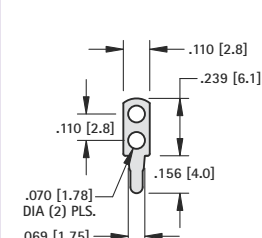
**MATERIAL:** .032 (.81) Brass

CAT. NO.	L
1041	.275 (7.0)
1046	.150 (3.8)



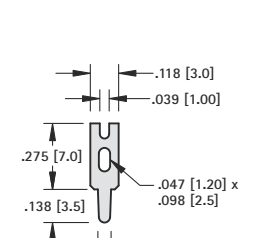
**MATERIAL:** .020 (.51) Brass

**CAT. NO. 1250**



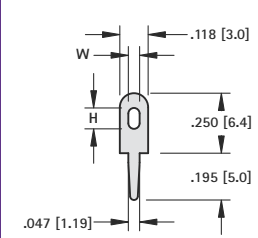
**MATERIAL:** .020 (.51) Brass

**CAT. NO. 1038**



**MATERIAL:** .025 (.64) Brass

**CAT. NO. 4951**

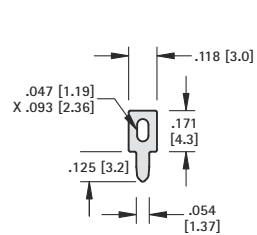


**MATERIAL:** .025 (.64) Brass

CAT. NO.	W	H
1249	.047 (1.20)	.087 (2.21)
4952	.063 (1.60)	.098 (2.50)

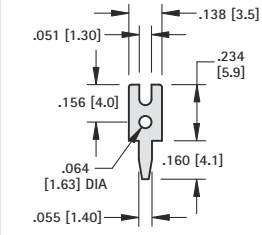
## CUSTOM TERMINALS

Custom terminals can be machined to your exact specifications. Standard and special terminals can be staked onto special boards. Please email/fax your design to our Engineering Department.



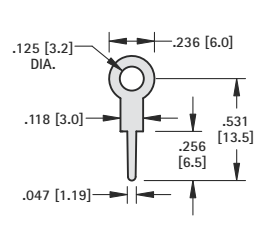
**MATERIAL:** .025 (.64) Brass

**CAT. NO. 1033**



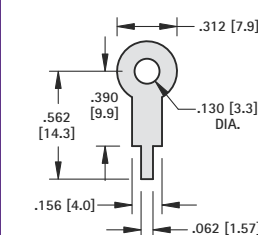
**MATERIAL:** .025 (.64) Brass

**CAT. NO. 1039**



**MATERIAL:** .020 (.51) Brass

**CAT. NO. 4954**



**MATERIAL:** .015 (.38) Brass

**CAT. NO. 680**