

STEP UP / STEP DOWN TRANSFORMERS

HEAVY DUTY STEPUP & STEPDOWN TRANSFORMER

Part No.	Weight (lbs.)	Std. Pack Carton
ST100	5	12
ST200	6	6
ST300	8	6
ST500	10	6
ST750	14	4
ST1000	18	2
ST1500	25	2
ST2000	29	2
ST3000	36	2
ST5000	51	1

- 110V AC to 220V AC or 220V AC to 110V AC
 - Heavy Duty Transformer for safety and reliability
 - ON/OFF switch with indicator light
 - Universal output receptacles (will accept European 2 round pin plug, North American 2 flat pin and 3 prong plug)
- SAFETY FEATURES INCLUDE:**
- Built-in (non-detachable) power cord with strain relief
 - Fused Protection
 - Safety polarized input switch (100V AC, 200V AC, 220V AC and 240V AC)
 - Non slip rubber feet



Voltage Converter Plugs/Adaptors



48-517



48-518



48-519



48-520

- No. 48-517 - Two Round Pin No. 48-519 - Two Angled Pin, Australian Type
 No. 48-518 - Two Flat Pin No. 48-520 - Three Flat Pin, British Type
- Universal Adaptors Kit.**

No. 48-525 - Contains one each of above adaptors

Single Phase 110 to 120 volts Variable AC Transformer

The Philmore variable AC transformer permits the user to operate equipment on AC voltage anywhere between a few volts and a voltage about 10% above the normal AC line voltage.

INPUT: 110-120V@ 60Hz
OUTPUT: 0-130V AC, 500V Amps
No. 48-1205



1600 WATT VOLTAGE CONVERTER (Stepdown)

Voltage Converter

No. 48-516
Caution: Only for Resistive heating devices

Foreign Electricity Convertor Kit

No. 48-5000
 1600W Converter and 4 adaptors in a plastic storage bag.

- Changes 220/240VAC to 110/120VAC (stepdown)
- Round two prong plugs
- Flat outlet for U.S. plugs
- Ideal for larger appliances; (motorized) that draw more than 50W but under 1600W hair dryer, iron, curler etc.



CLASS 2 TRANSFORMERS

For security Cameras / Panels
 Primary: 120 Volt, 60 Hz

- No. 48-1220 - 12V AC-20V A
- No. 48-1240 - 12V AC-40V A
- No. 48-1620 - 16V AC-20V A
- No. 48-1640 - 16V AC-40V A
- No. 48-2420 - 24V AC-20V A
- No. 48-2440 - 24V AC-40V A



INPUT: 2 FLAT PINS
OUTPUT: SCREW TERMINALS



WITH LED INDICATOR LIGHT

50 WATT VOLTAGE CONVERTER (Stepdown)

- Changes 220/240V AC to 110/120VAC (stepdown)
- Round two prong plugs
- Flat outlet for U.S. plugs
- Ideal for small appliances; razor, recorder, radio etc..

No. 48-500



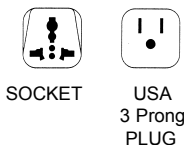
50 Watt Step-up / Step-down Transformer

The input is selectable from either 110/120 VAC or 220/240VAC @ 60/50 Hz. The unit comes with universal round pins and two adapters are included. The output has a standard 3 prong NEMA receptacle. Both 120V & 220V input are fused for protection. There is a power indicator LED on the front of the unit.

No. 48-550 50 Watt Up-Down Transformer

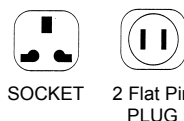


48-540

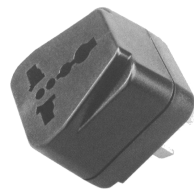


SOCKET USA 3 Prong PLUG

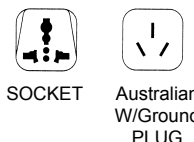
No. 48-545



SOCKET 2 Flat Pin PLUG

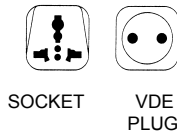


48-555



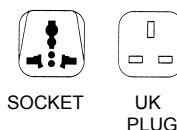
SOCKET Australian W/Ground PLUG

48-560



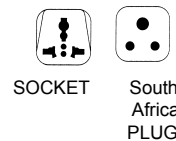
SOCKET VDE PLUG

48-565



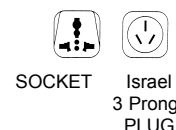
SOCKET UK PLUG

48-570



SOCKET South Africa PLUG

48-575



SOCKET Israel 3 Prong PLUG

World Traveler AC Plug Adaptors.

With an AC adaptor(s) to match the countries on your travel itinerary, you will be able to take along the dryer, shaver or any other portable appliance that is important to you. The series shown on this page will allow you to use those appliances in about two hundred and fifty countries.