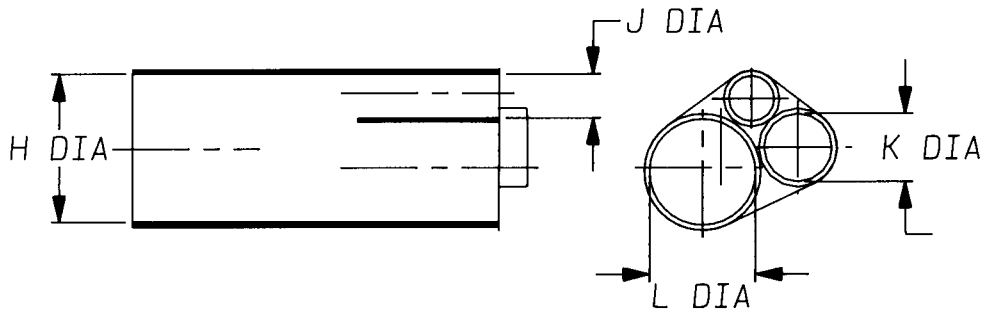
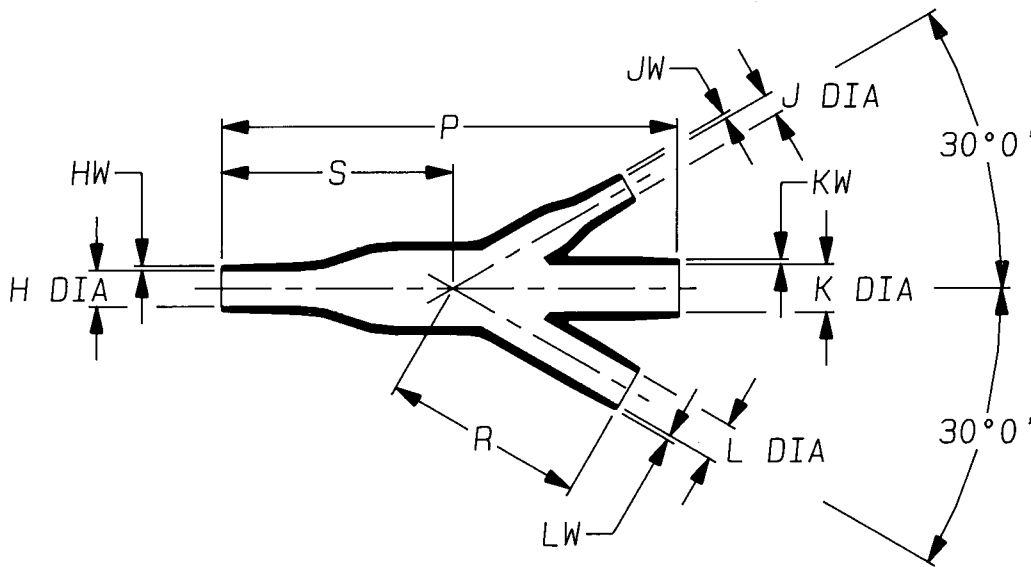


a) Part as supplied

463W033-G01



b) Part after unrestricted recovery



Part No.	H		J		K		L		P	R	S	HW	JW	KW	LW
	Min	Max	Min	Max	Min	Max	Min	Max	±5%	±5%	±5%	±20%	±20%	±20%	±20%
	a	b	a	b	a	b	a	b	b	b	b	b	b	b	b
463W033-G01	26	5.7	12	4.7	18	10.5	28	8.4	95	42	48	2.5	1.0	1.0	1.0

THIS IS AN OVEREXPANDED VARIANT  
MODIFIED DIMENSIONS ARE SHOWN THUS: - #

Copyright (!)  
Urheberrechte

The copyright in this drawing is the property of Raychem Ltd. The drawing is issued on condition that it is not copied, reproduced or disclosed to a third party, either in whole or in part without the prior written consent of Raychem Ltd.

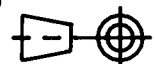
Drawn A.LILLEY. Checked *dl* Issue 1 Date June 1995

Conforms to ISO Recommendations  
3rd Angle Projection  
Not to Scale

Approval  
Design

MKTG.  
*dc*

G.A.  
*pc*



Iss.	Date	E.C.R. No.	Details of Change

**Ordering Information**

463W033-\*G01/\*\*-0

— Adhesive Slash Number (if required see compatibility chart)  
 — Modification number  
 — Material Dash Number (see compatibility chart)  
 — Base Part Number

**COMPATIBILITY CHART**

MATERIAL DASH NUMBER	MATERIAL DESCRIPTION	COATING SLASH NUMBER
-3	POLYOLEFIN, SEMI-RIGID	/42, /86
-4	POLYOLEFIN, FLEXIBLE	/42, /86
-25	ELASTOMER, FLUID RESISTANT	/86, /225

AS SUPPLIED DIMENSIONS ARE FOR UNCOATED PARTS,  
WHEN COATING IS ADDED, ENTRY DIAMETERS WILL REDUCE BY 1.5mm MAX.