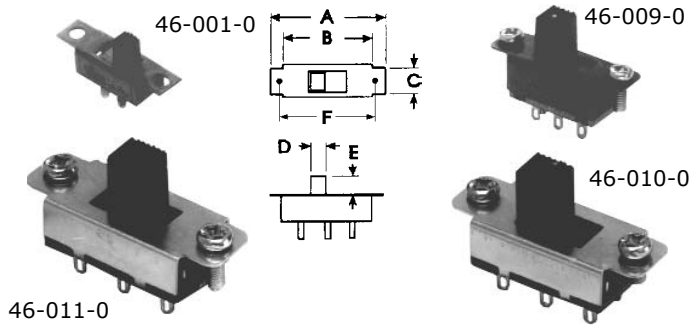


SLIDE SWITCHES

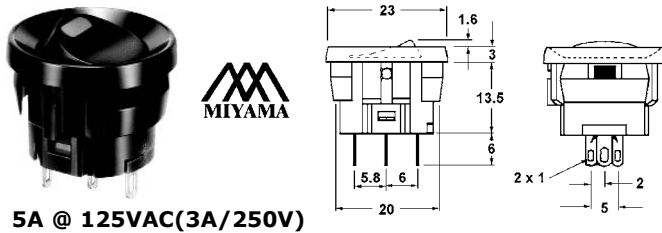


Current ratings are at 125VAC. Dimensions are in mm.

Bulk Part #	Rating	Poles	Switch	A	B	C	D	E
46-001-0	.3A	SPDT	on-on	19	15	5.4	3.2	15
46-009-0	.3A	DPDT	on-on	23	19	7.5	4.5	19
46-010-0	1A	DPDT	on-on	35	28	13	7.0	31
46-011-0	1A	DPDT	on-off-on	38	32	13	7.0	34

Use -2 for Display Package

ROCKER SWITCHES

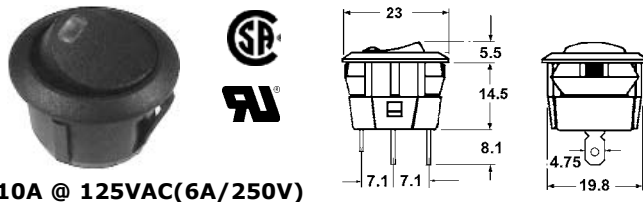


5A @ 125VAC(3A/250V)

Single hole snap-in mount with LED indicator.
LED requires external limit resistor.

- 46-102-0 SPST on-off black button red LED
- 46-103-0 SPST on-off black button green LED
- 46-104-0 SPST on-off black button yellow LED

Use -1 for Display Package

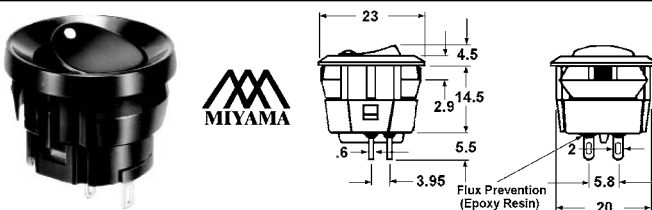


10A @ 125VAC(6A/250V)

Single hole snap-in mount with LED indicator.
LED requires external limit resistor.

- 46-102J-0 SPST on-off black button red LED
- 46-103J-0 SPST on-off black button green LED
- 46-104J-0 SPST on-off black button yellow LED

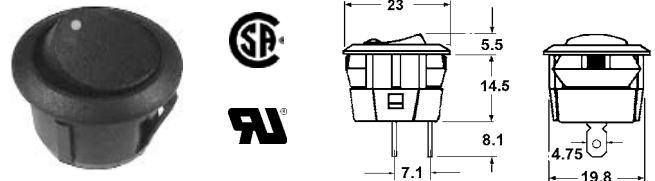
Use -1 for Display Package



Single hole snap-in mount. 5A @ 125VAC (3A @ 250VAC)

- 46-100-0 SPST on-off black button white dot
- 46-101-0 SPST on-off red button white dot

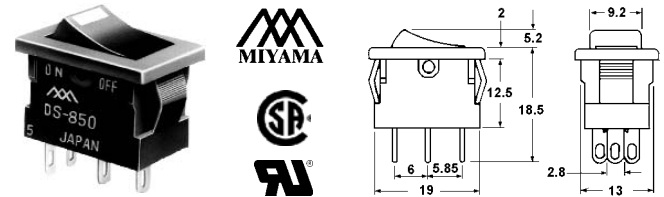
Use -1 for Display Package



Single hole snap-in mount. 10A @ 125VAC (6A @ 250VAC)

- 46-100J-0 SPST on-off black button white dot

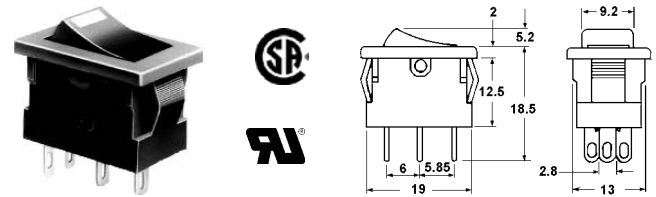
Use -1 for Display Package



Snap-in mounting 5A @ 125VAC(3A/250V).
LED requires external limit resistor.

- 46-140-0 SPST on-off red LED indicator
- 46-141-0 SPST on-off green LED indicator

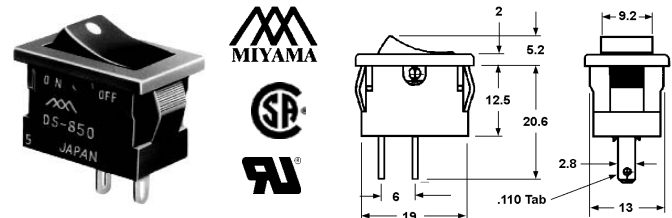
Use -1 for Display Package



Snap-in mounting 10A @ 125VAC(6A/250V).
LED requires external limit resistor.

- 46-140J-0 SPST on-off red LED indicator
- 46-141J-0 SPST on-off green LED indicator

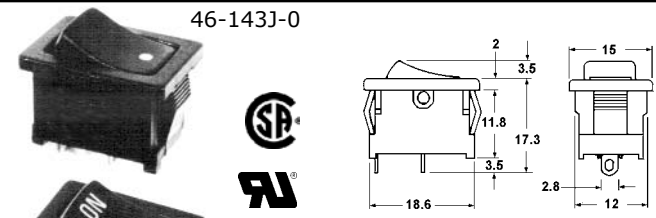
Use -1 for Display Package



Snap-in mounting 5A @ 125VAC (3A/250V).
Available with white dot or ON-OFF markings.

- 46-143-0 SPST on-off black button white dot
- 46-144-0 SPST on-off black button ON-OFF

Use -1 for Display Package



Snap-in mounting

10A @ 125VAC/ (6A/250V)

- 46-143J-0 SPST on-off black button white dot
- 46-144J-0 SPST on-off black button ON-OFF

Use -1 for Display Package

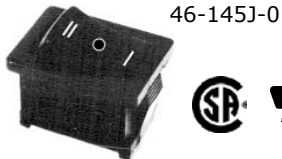
WEATHERPROOF CAP

Suitable for 46-14x type switches.

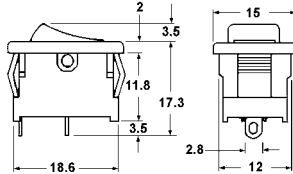


- 46-149J-0 Waterproof Cap

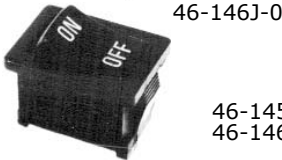
Use -5 for Display Package



46-145J-0



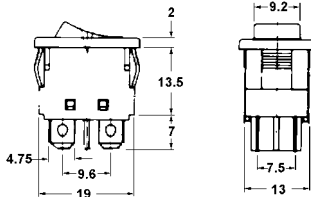
Snap-in mounting



46-146J-0

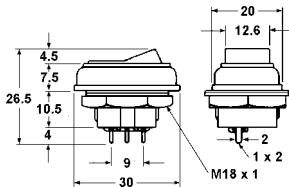
46-145J **10A @ 125VAC/ (6A/250V)**
46-146J **6A @ 125VAC/ (3A/250V)**

46-145J-0 SPDT on-off-on black Int. Symbol
46-146J-0 SPST (on)-off black button ON-OFF
Use -1 for Display Package



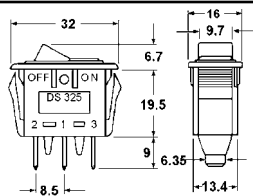
Snap-in mounting **10A @ 250VAC**

46-150-0 DPST on-off black button white dot
46-151-0 DPST on-off black button ON-OFF
Use -1 for Display Package



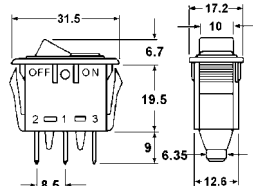
Round 18mm diameter mounting hole **6A @ 125VAC**

46-170-0 SPST on-off white button
46-183-0 DPDT on-off white button
Use -1 for Display Package



Snap-in mounting with neon indicator. **15A @ 125VAC.**
Mtg. hole: 30.2 x 11mm

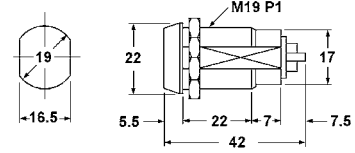
46-190-0 SPST on-off amber rocker
46-192-0 SPST on-off red rocker
Use -1 for Display Package



Snap-in mounting with neon indicator. **15A @ 125VAC.**
Mtg. hole: 29 x 13mm

46-190J-0 SPST on-off amber rocker
46-192J-0 SPST on-off red rocker
Use -1 for Display Package

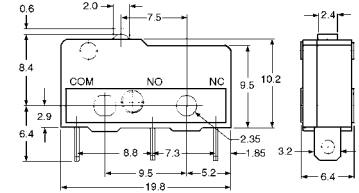
KEY SWITCHES



SPST Key removable in either position.
4 A @ 125VAC

47-282-0 Bulk assorted keys
47-282-1 Pkg assorted keys
47-282K-0 Bulk same key
47-282-KEY Blank Key

MICRO SWITCHES



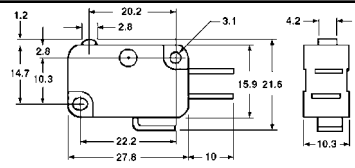
5A @ 125VAC (3A/250V) N/O and N/C contacts.
Life: 200,000 operations (full load)

Contact resistance: 30mΩ maximum
Insulation resistance: 100MΩ min. (500VDC)
Dielectric strength: 1000VAC for 1 minute

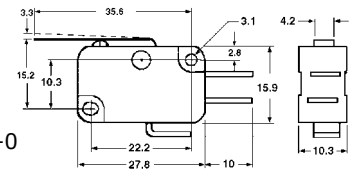
47-300-0 Bulk **47-300-1** Package



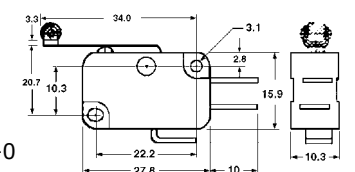
47-400-0



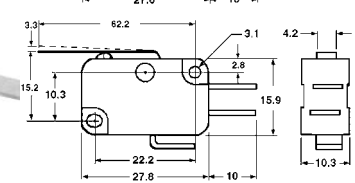
47-402-0



47-406-0



47-403-0



15A @ 125VAC or 250VAC

Contact resistance: 15mΩ maximum (initial)
Insulation resistance: 100MΩ min (@ 500VDC)
Dielectric strength: 1,000VAC for 1 minute
Service life mechanical: 1,000,000 operations
Service life electrical: 100,000 operations (full load)

All have .187" faston terminals and N/O and N/C terminals.



47-400-0 No actuator
47-402-0 27.5mm actuator
47-403-0 54.1mm actuator
47-406-0 25.9mm roller actuator
Use -1 for Display Package

