

STANDARD KEYSTONE DATACOM WALL PLATE INSERTS & JACKS

Keystone Wall Plate Inserts

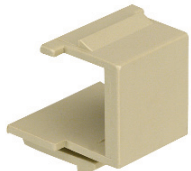


Fig. 1

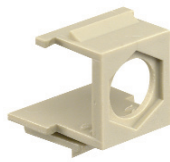


Fig. 2

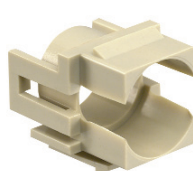


Fig. 3

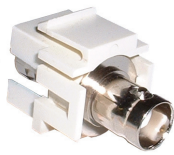


Fig. 4

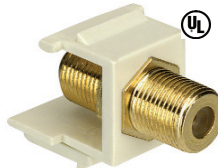


Fig. 5

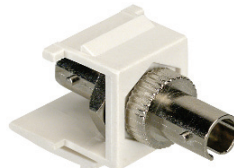


Fig. 6

Keystone Wall Plate Inserts

Retail Part No.	Bulk Part No.	Fig. No.	Description	Color
45-942	45-942-BU	1	Blank Insert	Ivory
45-5638	45-5638-BU	1	Blank Insert	White
45-990	45-990-BU	1	Blank Insert	Lt. Almond
45-944	45-944-BU	2	Coax Insert, Empty	Ivory
45-944W	45-944W-BU	2	Coax Insert, Empty	White
45-945	45-945-BU	3	Insert for BNC Connector	Ivory
45-5640	45-5640-BU	4	BNC Connector Insert	White
45-991	45-991-BU	5	Coax Insert-Gold	White
45-992	45-992-BU	5	Coax Insert-Gold	Ivory
45-993	45-993-BU	5	Coax Insert-Gold	Lt. Almond
45-1600	45-1600-BU	5	"F" Coax Insert-Gold	Gray
45-964	45-964-BU	6	Fiber Insert, ST/ST	White
45-965	45-965-BU	6	Fiber Insert, ST/ST	Ivory
45-966	45-966-BU	6	Fiber Insert, ST/ST	Lt. Almond

Note: Fits all Keystone ready wall plates on pages 120 and 121 and all keystone ready inserts on pages 124, 125, and 126.

180° and 90° IDC Tool-less Keystone Jacks



Fig. 7

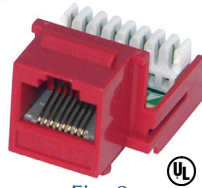


Fig. 8



Fig. 9

Cat 3&4, 180° IDC Tool-less Jacks

Bulk Part No.	Figure No.	Description	Color
45-5019-BU	7	Tool-less IDC Jack	White
45-5020-BU	7	Tool-less IDC Jack	Ivory
45-5026-BU	7	Tool-less IDC Jack	Lt. Almond
45-5027-BU	7	Tool-less IDC Jack	Blue
45-5028-BU	7	Tool-less IDC Jack	Red

Note: Cat 3&4, 6P4C

Cat 5e, 180° IDC Tool-less Jacks

Retail Part No.	Bulk Part No.	Figure No.	Description	Color
45-5575	45-5575-BU	8	Tool-less IDC Jack	Orange
45-5576	45-5576-BU	8	Tool-less IDC Jack	Yellow
45-5577	45-5577-BU	8	Tool-less IDC Jack	Black
45-5578	45-5578-BU	8	Tool-less IDC Jack	Red
45-5579	45-5579-BU	8	Tool-less IDC Jack	Green
45-5680	45-5680-BU	8	Tool-less IDC Jack	Blue
45-5836	45-5836-BU	8	Tool-less IDC Jack	White
45-5837	45-5837-BU	8	Tool-less IDC Jack	Ivory
45-5838	45-5838-BU	8	Tool-less IDC Jack	Lt. Almond
45-5839	45-5839-BU	8	Tool-less IDC Jack	Gray

Note: Cat 5e, 8P8C

Cat 6, 90° IDC Tool-less Jacks

Retail Part No.	Bulk Part No.	Figure No.	Description	Color
45-6629	45-6629-BU	9	Tool-less IDC Jack	White

Note: Cat 6, 8P8C

Note: Fits all Keystone ready wall plates on pages 120 and 121 and all keystone ready inserts on pages 124, 125, and 126.

90° 110 Punchdown Keystone Jacks



Fig. 10



Fig. 11

Cat 5e, 90° 110Punchdown Jacks

Retail Part No.	Bulk Part No.	Figure No.	Color
45-5556	45-5556-BU	10	Yellow
45-5557	45-5557-BU	10	Blue
45-5558	45-5558-BU	10	Red
45-5559	45-5559-BU	10	Green
45-5560	45-5560-BU	10	Black
45-5561	45-5561-BU	10	Orange
45-5562	45-5562-BU	10	Ivory
45-5569	45-5569-BU	10	White
45-5840	45-5840-BU	10	Lt. Almond
45-5841	45-5841-BU	10	Gray

Note: Cat 5e, 8P8C

Cat 6, 90° 110Punchdown Jacks

Retail Part No.	Bulk Part No.	Figure No.	Color
	45-1619-BU	11	Lt. Almond
	45-1620-BU	11	Blue
	45-1621-BU	11	Red
45-6750	45-6750-BU	11	Ivory
45-6751	45-6751-BU	11	Black
45-6759	45-6759-BU	11	White

Note: Cat 6, 8P8C

Note: Fits all Keystone ready wall plates on pages 120 and 121 and all keystone ready inserts on pages 124, 125, and 126.