

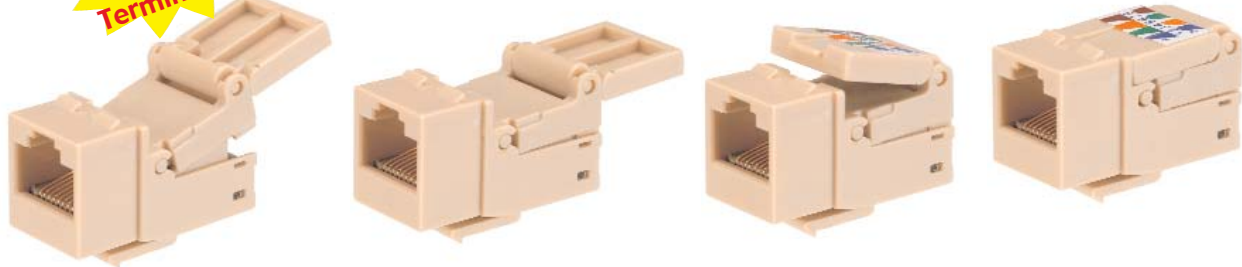
NEW

KEYSTONE DATACOM JACKS (Cont.)—QUICK LOQ SERIES

Quick LoQ

Totally Tool-LESS Termination!

NEW



Self-crimping/Tool-less

Quick LoQ Tool-less Keystone Inserts allow you to quickly connect Cat 3/4, 5e, and 6 wire to their respective Jacks. (See connection stages below.) Simply cut away the outer sheath, separate the colored inner wires, align to their proper pin (noted in package), using thumb and fingers clamp upper closure down upon wires. No need to strip wires, thus saving in time.

Quick LoQ Cat 3/4 Jacks

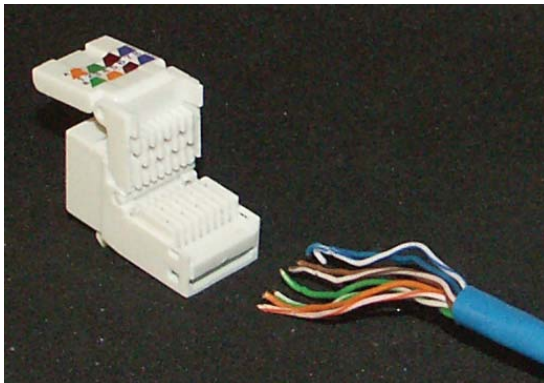
Retail Part No.	Bulk Part No.	Color
45-5530	45-5530-BU	Black
45-5531	45-5531-BU	Lt. Almond
45-5532	45-5532-BU	Red
45-5533	45-5533-BU	Orange
45-5534	45-5534-BU	Yellow
45-5535	45-5535-BU	Green
45-5536	45-5536-BU	Blue
45-5537	45-5537-BU	Ivory
45-5538	45-5538-BU	Gray
45-5539	45-5539-BU	White

Quick LoQ Cat 5e Jacks

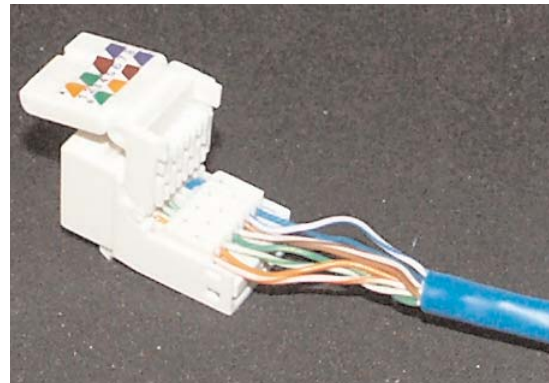
Retail Part No.	Bulk Part No.	Color
45-5500	45-5500-BU	Black
45-5501	45-5501-BU	Lt. Almond
45-5502	45-5502-BU	Red
45-5503	45-5503-BU	Orange
45-5504	45-5504-BU	Yellow
45-5505	45-5505-BU	Green
45-5506	45-5506-BU	Blue
45-5507	45-5507-BU	Ivory
45-5508	45-5508-BU	Gray
45-5509	45-5509-BU	White

Quick LoQ Cat 6 Jacks

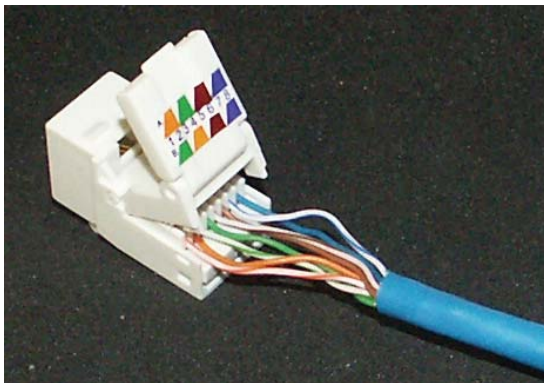
Retail Part No.	Bulk Part No.	Color
45-5520	45-5520-BU	Black
45-5521	45-5521-BU	Lt. Almond
45-5522	45-5522-BU	Red
45-5523	45-5523-BU	Orange
45-5524	45-5524-BU	Yellow
45-5525	45-5525-BU	Green
45-5526	45-5526-BU	Blue
45-5527	45-5527-BU	Ivory
45-5528	45-5528-BU	Gray
45-5529	45-5529-BU	White



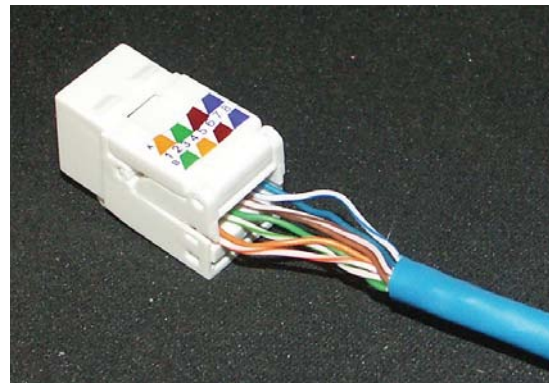
Quick LoQ Step 1



Quick LoQ Step 2



Quick LoQ Step 3



Quick LoQ Step 4

For the latest information – www.gcelectronics.com
All quantities are single; BU's are packages of 10 Unless otherwise noted.