

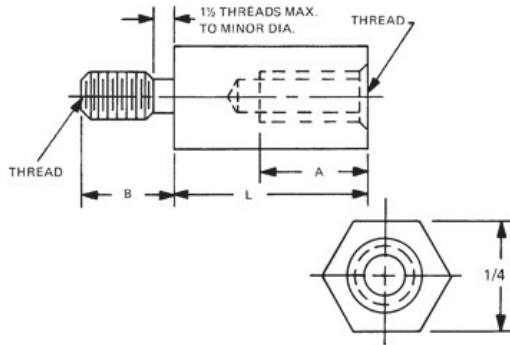


MW Industries, Inc.

- Home
- Products
- Online Catalog
- Request Quote
- Order Online
- Check Stock
- Request Print Catalog
- Request Samples
- Engineering Data
- Distributors
- Capabilities Brochure

Home > 1/4 Hex Male-Female Standoffs

1/4 HEX MALE-FEMALE STANDOFFS



[Home](#) [Previous](#) [Next](#)
[Related Metric](#)

Ordering Code			
xxxxx	xxx	xx	x
Length	Thread	Material	Finish

PART: 4551 440 SS

Red ?'s show missing selections. [Help](#)

- [Material Specifications](#)
- [Ordering non-standard items](#)
- [Request a Drawing](#)

Add to Cart

Thread Length Code			
Thread	A	B	
2-56	3/16	5/32	
4-40	1/4	3/16	
6-32	3/8	1/4	
8-32	7/16	3/8	

Qty1 *

Qty2

Qty3

- 4559 2-1/8
- 4560 2-1/4
- 4561 2-3/8
- 4562 2-1/2
- 4563 2-5/8
- 4564 2-3/4
- 4565 2-7/8
- 4566 3"
- 4567 3-1/4
- 4568 3-1/2
- 4569 3-3/4
- 4570 4"

Thread *

Select	Code	Thread
<input type="radio"/>	256	2-56
<input checked="" type="radio"/>	440	4-40
<input type="radio"/>	632	6-32
<input type="radio"/>	832	8-32

Material *

Select	Code	Material	RoHS
<input type="radio"/>	AL	Aluminum	YES
<input type="radio"/>	B	Brass	YES
<input checked="" type="radio"/>	SS	Stainless Steel	YES
<input type="radio"/>	S	Steel	YES
<input type="radio"/>	N	Nylon	YES



Finish *

<input checked="" type="radio"/>	Plain Finish
<input type="radio"/>	1-Cad clear chromate/commercial*
<input type="radio"/>	2-Cad clear chromate*
<input type="radio"/>	3-Cad yellow chromate*
<input type="radio"/>	4-Chrome over nickel
<input type="radio"/>	5-Nickel
<input type="radio"/>	6-Gold iridite*
<input type="radio"/>	7-Clear iridite
<input type="radio"/>	9-Alodine 1200*
<input type="radio"/>	10-Bright chrome
<input type="radio"/>	11-Satin chrome
<input type="radio"/>	12-Zinc