

**MICRO SWITCH**  
 FREEPORT ILLINOIS U.S.A.  
 A DIVISION OF HONEYWELL  
 FED. MFG. CODE 91929

**SWITCH - ENCLOSED**

CATALOG LISTING  
**44EN27-12**

**M 44EN27-12**

DRAWING NUMBER

ISSUE

10

14

14

14

REVISIONS

A CO 44351

S L B 28 NOV 79

B CO47573

TSM AUG 80

C CO 49806

T S K 28 SEPT 81

D CO65563

T S K 18 APR 89

E 0063671

PRS 21 APR 10

21 APR 10

21 APR 10

21 APR 10

21 APR 10

21 APR 10

21 APR 10

21 APR 10

21 APR 10

REPLACES

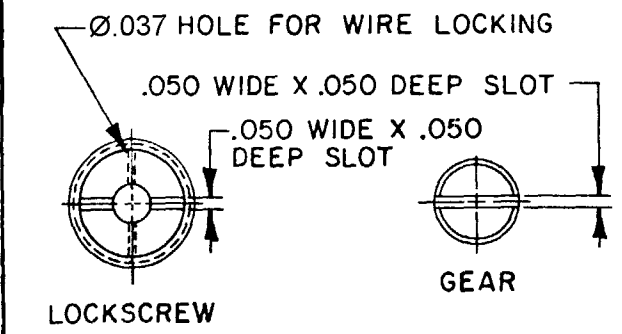
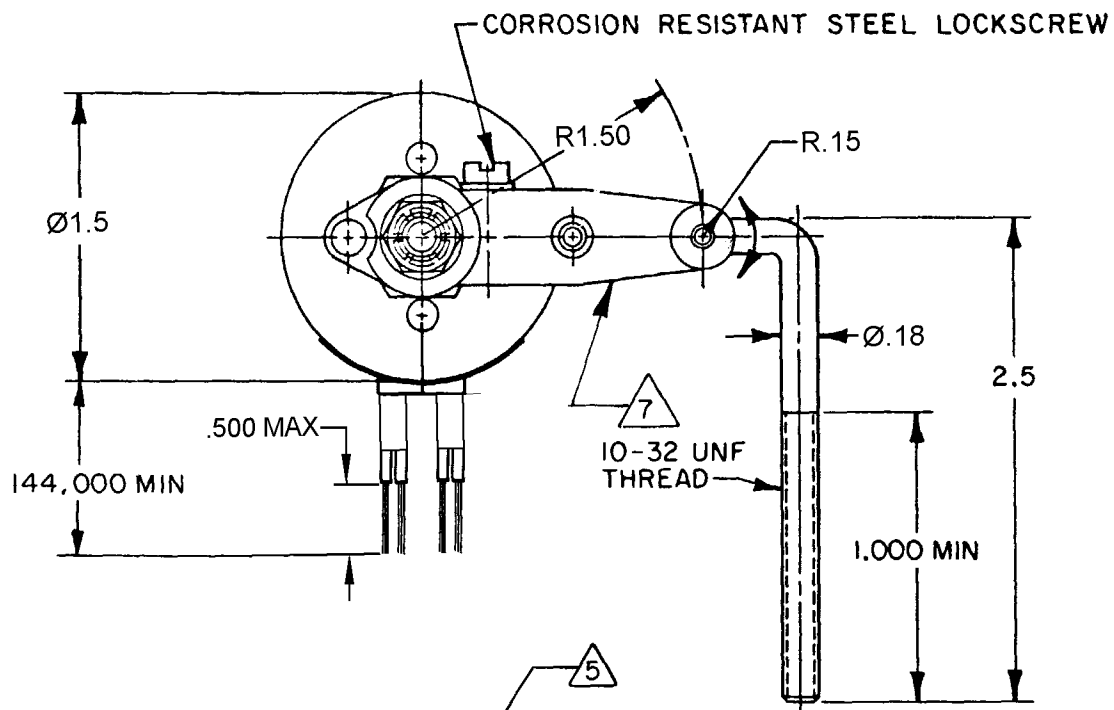
RELEASE NO. PR-1844

CHECK

CHECK

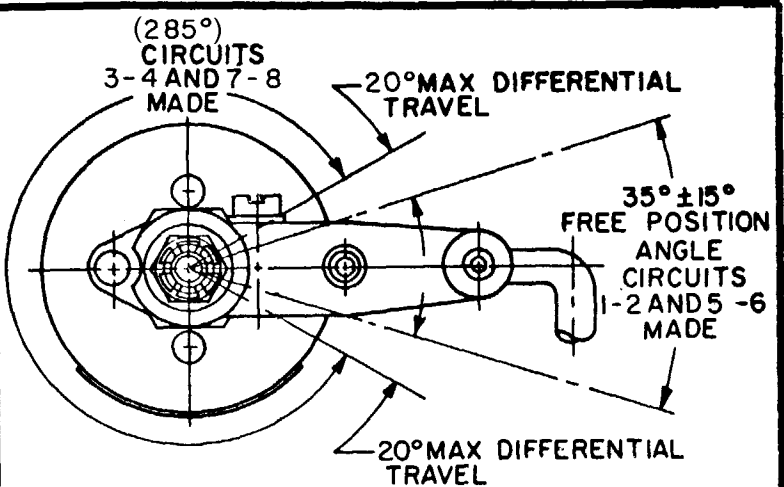
CHECK

CHECK

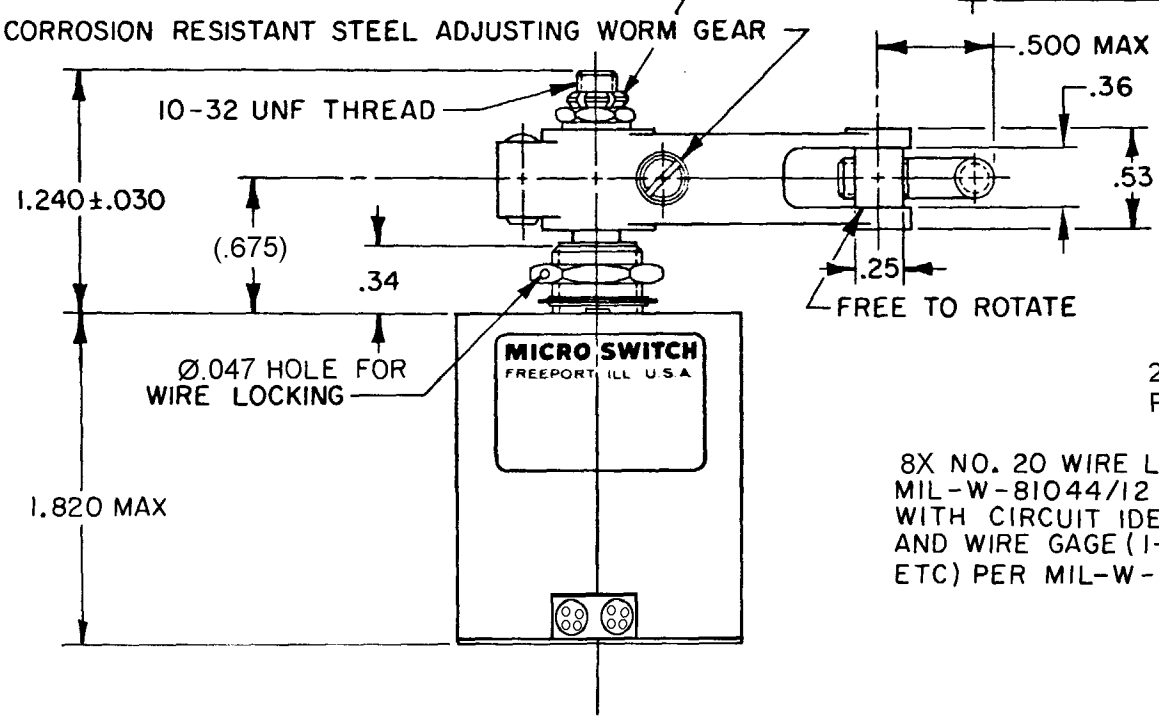
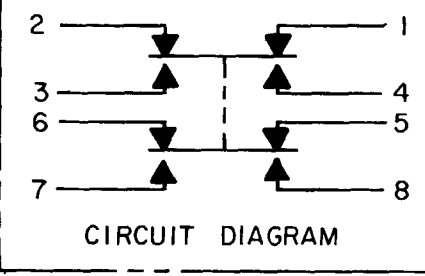


LEVER MAY BE ADJUSTED FOR AN INFINITE NUMBER OF POSITIONS THRU 360° ADJUSTMENT IS MADE BY LOOSENING THE LOCK NUT AND THEN THE LOCKSCREW AND TURNING GEAR UNTIL LEVER IS IN DESIRED POSITION. LOCKSCREW AND LOCK NUT ON SHAFT IS THEN TIGHTENED TO POSITIVELY LOCK LEVER IN POSITION.

**LEVER ADJUSTMENT DETAIL**



**CHARACTERISTICS**



CORROSION RESISTANT STEEL LOCKING NUT, .37 ACROSS FLATS (MS 21083-N3)

CORROSION RESISTANT STEEL SHAFT, BUSHING AND PINS

CORROSION RESISTANT STEEL WASHER, Ø.438 X .032 THICK (AN 960-CIOL)

15/32-32 UNS THREAD TO WITHIN .062 OF SHOULDER

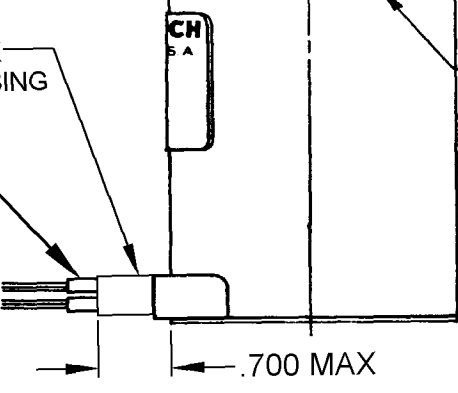
CORROSION RESISTANT STEEL HEX NUT, .62 ACROSS FLATS X .125 THICK

CORROSION RESISTANT STEEL INTERNAL TOOTH LOCKWASHER, Ø.60 X (.018) THICK (MS 35333-136)

2X Ø.140 X .062 HIGH PINS LOCATED ON Ø.765 CENTERS

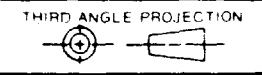
2X HEAT SHRINK POLYOLEFIN TUBING

8X NO. 20 WIRE LEAD PER MIL-W-81044/12 MARKED WITH CIRCUIT IDENTIFICATION AND WIRE GAGE (1-20, 2-20, ETC) PER MIL-W-5088



RASTER

THIS DRAWING COVERS A PROPRIETARY ITEM AND IS THE PROPERTY OF MICRO SWITCH, A DIVISION OF HONEYWELL. THIS DRAWING IS NOT TO BE COPIED OR USED WITHOUT THE APPROVAL OF MICRO SWITCH.



SCALE NONE

DO NOT SCALE PRINT

**CHARACTERISTICS**

OPERATING TORQUE --- 10 IN-LB MAX

PRETRAVEL DIFFERENTIAL TRAVEL OVERTRAVEL FREE POSITION } SEE DETAIL

**ELECTRICAL DATA**

CONTACT ARRANGEMENT SEE CIRCUIT DIAGRAM

LOAD	28 VDC	
	SEA LEVEL	50,000 FT.
RES	15	15
IND	10	10
MOTOR	5	
LAMP	3	3

**TOLERANCES**  
 APPLY TO DESIGN UNITS. CONVERSIONS ARE ONLY FOR REFERENCE. UNLESS NOTED, TOLERANCES ARE ±

DIM.	TOL.	DIM.	TOL.
mm	mm/in	in	mm/in
NO PLACES	X	1/04	
ONE PLACE	X,X	0.4/016	X XX 0.8/03
TWO PLACES	X,XX	0.15/006	X XX 0.38/015
THREE PLACES	X,XXX		X XXX 0.13/005

DESIGN UNITS: SI METRIC  US CUSTOMARY

RAW MATERIAL - COMMERCIAL STANDARD MICRO SWITCH STANDARDS APPLY. DIMENSIONS ARE TO BE MET BEFORE PROTECTIVE COATINGS ARE APPLIED.

WEIGHT 19.25 OZ MAX

**NOTES:**

- 1 - CORROSION RESISTANT STEEL ENCLOSURE
- 2 - SWITCH SEALED PER MIL-PRF-8805 SYMBOL 4
- 3 - UNIT PROVIDES NO SHAFT RESTORING TORQUE THE ACTUATING DEVICE MUST CONTROL MOVEMENT OF THE SHAFT
- 4 - CIRCUIT DIAGRAM AND CATALOG LISTING ARE SHOWN ON NAMEPLATE
- 5 - DO NOT APPLY MORE THAN 20-25 INCH-POUNDS OF TORQUE WHEN TIGHTENING LOCKING NUT
- 6 - LEADS PARALLEL WITH CENTERLINE OF MOUNTING
- 7 - PINS WITHIN 10° HARDWARE MAY BE PACKAGED UNASSEMBLED PER MIL-PRF-8805

FO-5265 1-A

DRAWN

S L B 28 NOV 79