




MATERIAL AND FINISH:

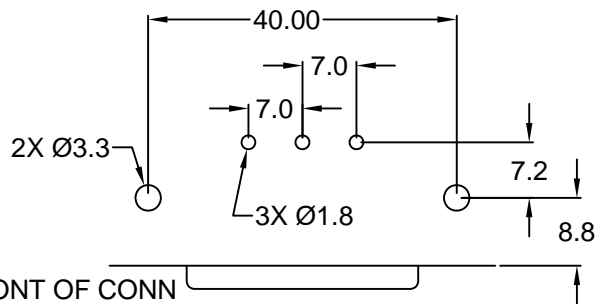
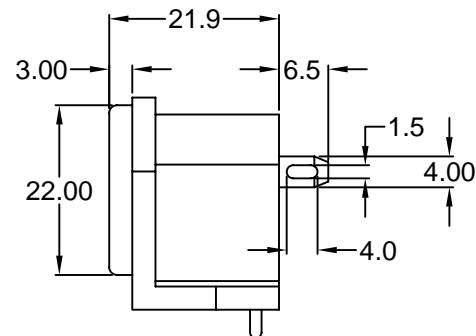
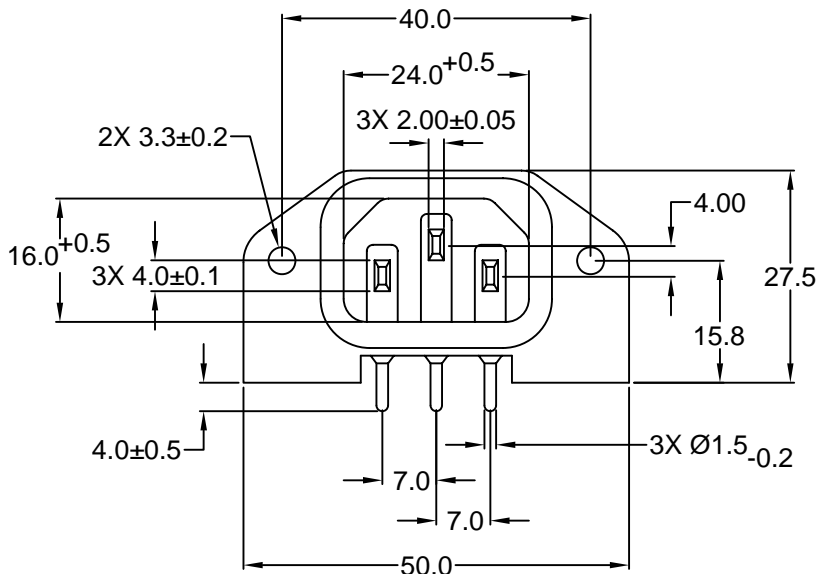
Insulator: PBT, color black, UL-94V-0 rated
Contacts: Brass, Nickel plated

ELECTRICAL SPECIFICATIONS:

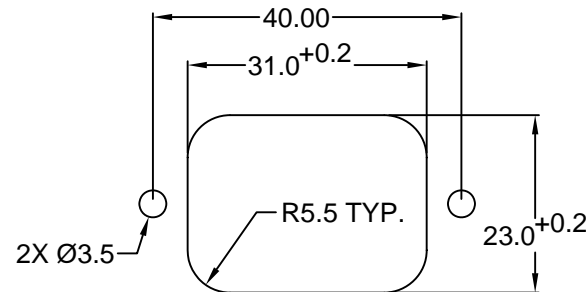
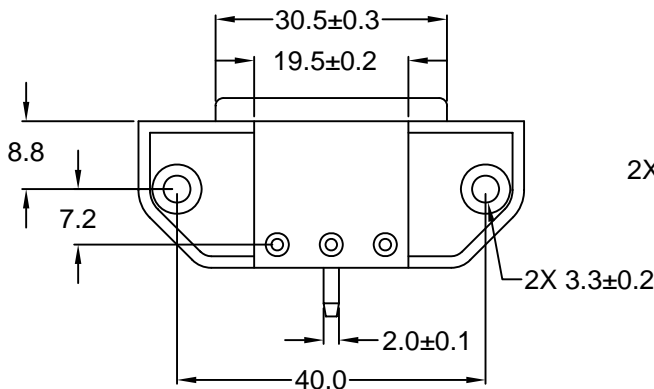
Current rating: 10 A 
Voltage rating: 250 VAC
Current rating: 15 A 
Voltage rating: 250 VAC 
Insulation resistance: 100 Mohm min. at 500 VDC
Dielectric withstanding voltage: 2000 VAC for one minute

MECHANICAL SPECIFICATIONS:

Recommended screw size: Metric screw with Ø3.30mm or #6-32 US



RECOMMENDED PCB LAYOUT (TOP VIEW)



RECOMMENDED PANEL CUTOUT

REV	DATE	CHANGE	CHNG		CHK		APPR	
			SS	TD	PB	TD	PB	TD
A	04/06/00	REVISED & REDRAWN	SS	TD	PB	TD	PB	TD
B	4/13/00	REVISED & UPDATED	TD	JJ	TD	PB	SS	
C	12/13/00	Revise mounting hole dia.	JJ	TD	PB	SS		
D	9/27/01	REMED'D SCREW SIZE	TD	PB	GQ	TD	PB	
E	11/26/01	REVISED / UPDATED	GQ	TD	PB	SS		
F	6/23/03	ADD 21.9 DIM	TD	PB				

TOLERANCE UNLESS OTHERWISE SPECIFIED	
X	± 1
X.X	± 0.4
X.XX	± 0.20

DRAWN BY	SS	DATE:	12/10/98
CHECK BY	AH	DATE:	12/10/98
APPR BY	SS	DATE:	12/10/98

Power Dynamics, Inc.
Phone: 973 560-0019 Whippany, New Jersey Fax: 973 560-0076

PART: IEC 60320 C14 APPL. INLET; PCB TERMINALS, 7.2mm FOOTPRINT, SIDE FLANGE

42R65

SCALE: NTS

ALL DIMENSIONS FOR REFERENCE ONLY
DIMENSIONS ARE IN MILLIMETERS

SHEET 1 of 1
REV: F

RoHS COMPLIANT