

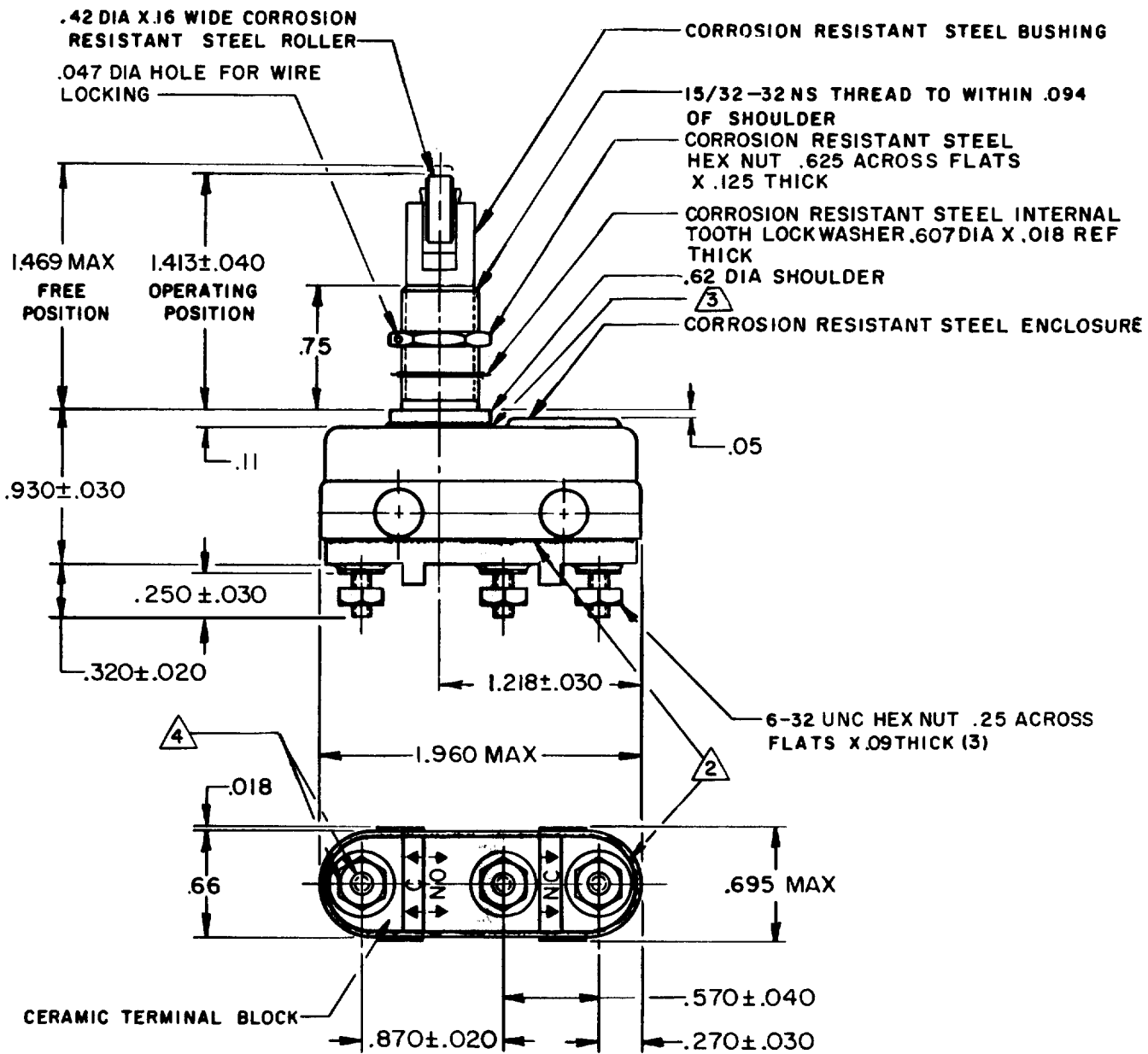
MICRO SWITCH

FREERPORT ILLINOIS, U.S.A
A DIVISION OF HONEYWELL
FED. MFG. CODE 9 1929

SWITCH - BASIC

CATALOG LISTING
3HT84

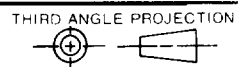
CATALOG LISTING
M 3HT84
 PAGE 1 OF 1
 DRAWING NUMBER
 ISSUE 10
 REVISIONS
 A CO 52877
 24 FEB 83
 B CO 54474
 3 FEB 84
 C CO 92890
 7 MAY 98
 D 0018471
 NM 20FEB06
 CHECK
 28 FEB 83
 20FEB06
 RJ
 24 FEB 83
 20FEB06
 FORMTEK
 DRAWN
 T M M 24 FEB 83



NOTE--

- 1-SWITCH WILL WITHSTAND TEMPERATURE OF 1000°F MAX
- 2 HOUSING BASE JOINT IS FILLED WITH CERAMIC POTTING
- 3 WELDED AND BRAZED JOINT
- 4 RECOMMENDED APPLIED TORQUE FOR A 6-32 UNC STAINLESS STEEL TERMINAL IS 10 INCH-LB MAX. EXCEEDING THIS TORQUE COULD DAMAGE THE SWITCH

THIS DRAWING COVERS A PROPRIETARY ITEM AND IS THE PROPERTY OF MICRO SWITCH, A DIVISION OF HONEYWELL. THIS DRAWING IS NOT TO BE COPIED OR USED WITHOUT THE APPROVAL OF MICRO SWITCH.



CHARACTERISTICS
OPERATING FORCE — — — — 30 OZ MAX
RELEASE FORCE — — — — 6 OZ MIN
DIFFERENTIAL TRAVEL — — .010 MAX
OVERTRAVEL — — — — .188 MIN
FULL OVERTRAVEL FORCE — 6 LB APPROX

ELECTRICAL DATA
CONTACT ARRANGEMENT S P D T
L305 3A 1/10HP 125 VAC 2A 1/6HP 250 VAC

SCALE FULL			
DO NOT SCALE PRINT			
TOLERANCES APPLY TO DESIGN UNITS. CONVERSIONS ARE ONLY FOR REFERENCE. UNLESS NOTED, TOLERANCES ARE ±			
DIM. mm	TOL. mm/in	DIM. in	TOL. mm/in
NO PLACES X	1/.04	X X	0.01/03
ONE PLACE X,X	0.4/.016	X XX	0.38/.015
TWO PLACES X,XX	0.15/.008	X XXX	0.13/.005
THREE PLACES X,XXX			
DESIGN UNITS <input type="checkbox"/> SI METRIC		US CUSTOMARY <input checked="" type="checkbox"/>	
WEIGHT 2.7 OZ MAX			

