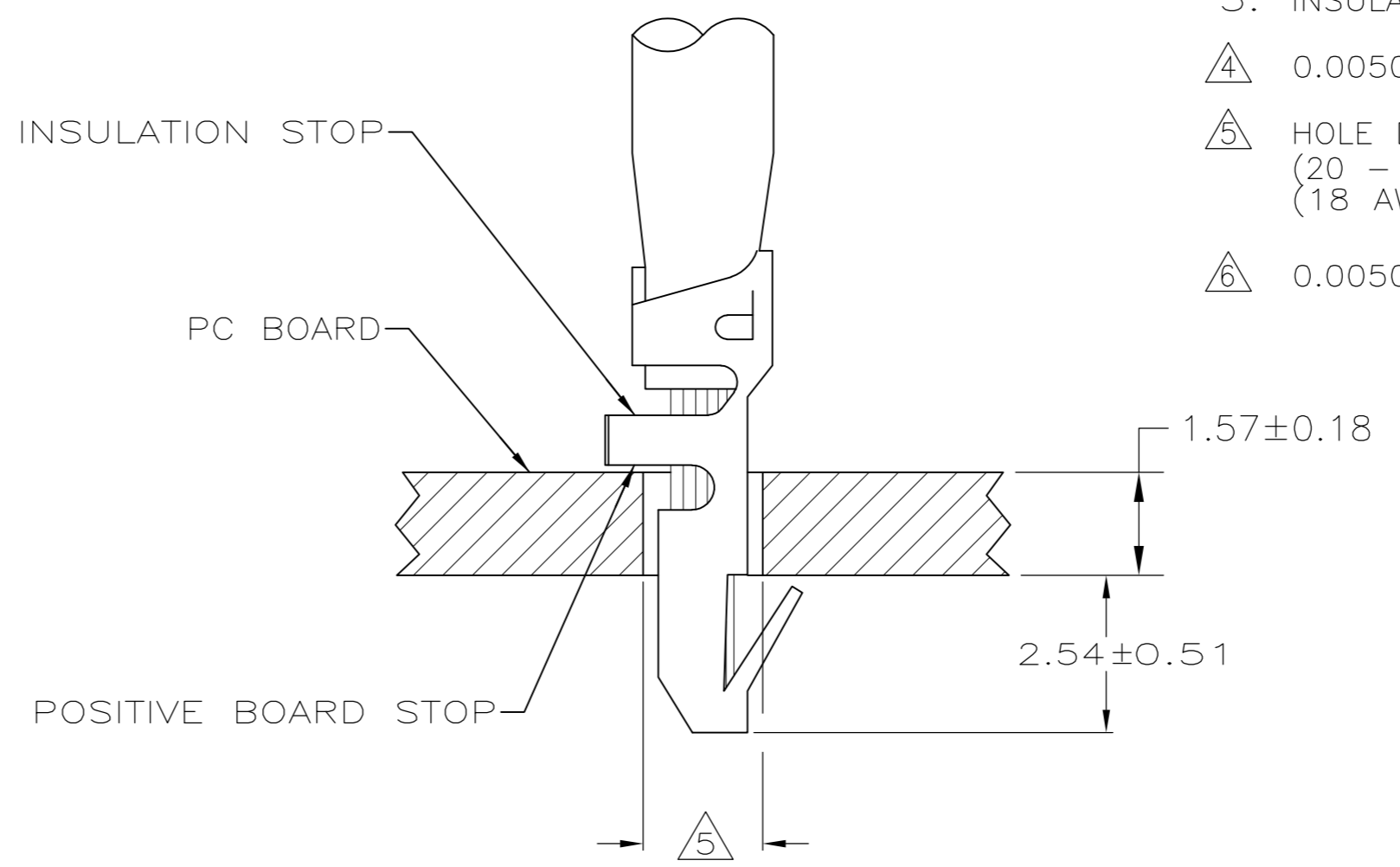
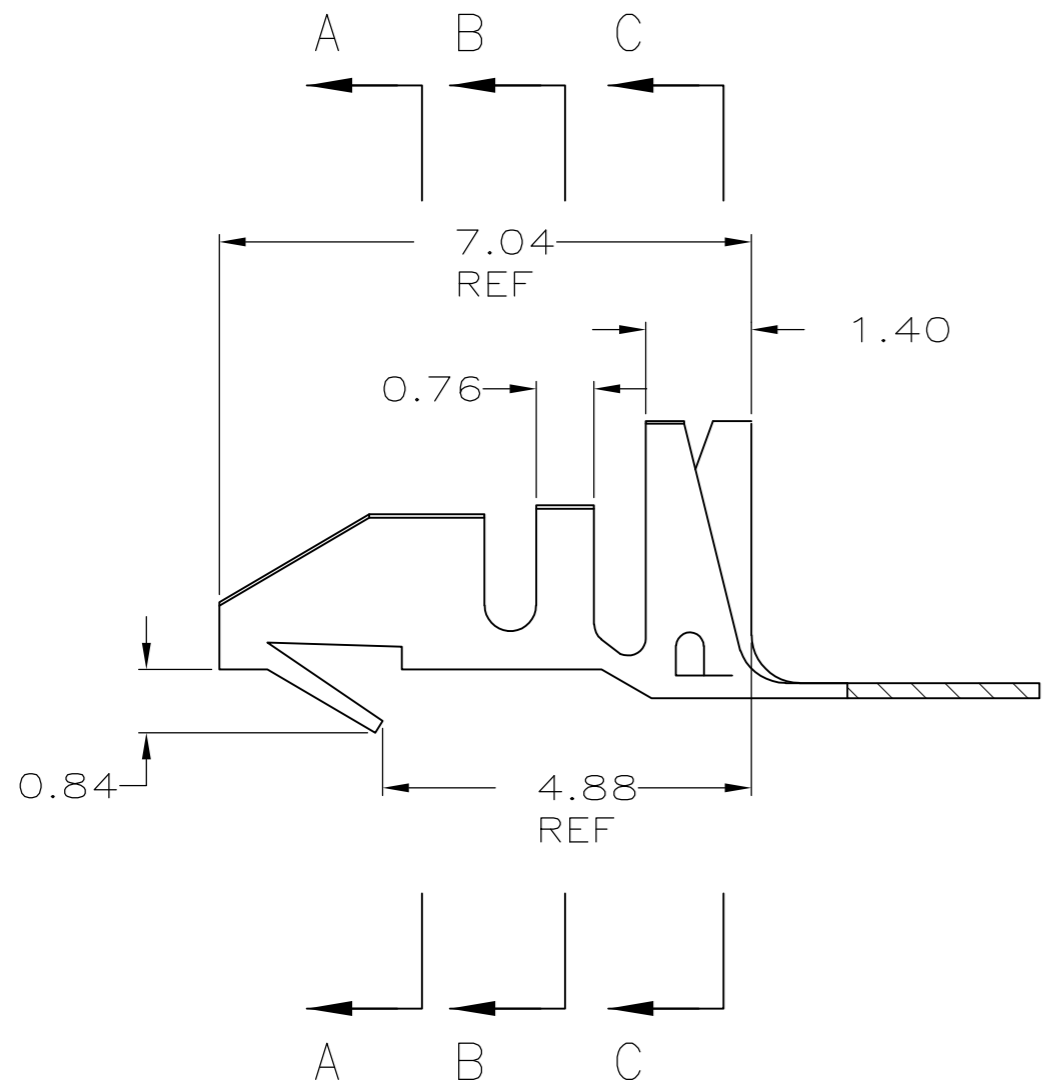
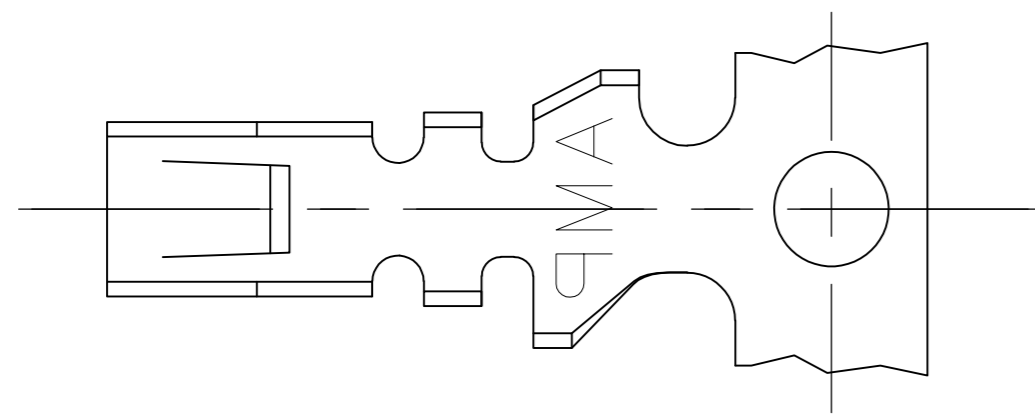
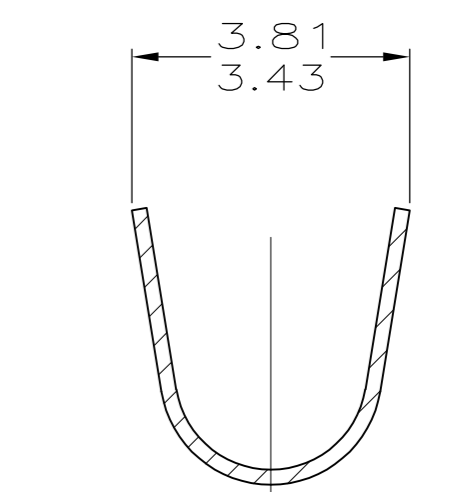
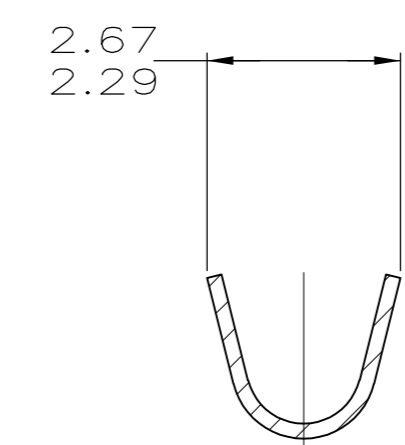
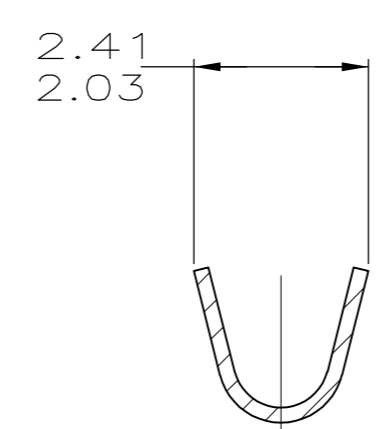


THIS DRAWING IS UNPUBLISHED. RELEASED FOR PUBLICATION
 © COPYRIGHT - By - ALL RIGHTS RESERVED.

LOC	DIST	REVISIONS			
P	LTR	DESCRIPTION	DATE	DWN	APVD
CM	00	C1	REVISED PER ECO-11-004820	11MAR11	RK HMR



- PARTS COMPLY WITH AMP SOLDERABILITY SPECIFICATION 109-11-2.
- WIRE RANGE: 0.3 - 0.9 MM² (22 - 18 AWG).
- INSULATION RANGE: 1.52 - 2.79
- 0.00508 MIN BRIGHT TIN-LEAD.
- HOLE DIAMETER TO BE 1.83±0.08 FOR WIRE 0.3 - 0.6 MM² (20 - 22 AWG) OR 1.96±0.08 FOR WIRE 0.8 - 0.9 MM² (18 AWG).
- 0.00508 MIN BRIGHT TIN.



SECTION A-A SECTION B-B SECTION C-C

6	3-794121-1
4	794121-1
FINISH	PART NO.

0.51	.020	1.52	.060	2.54	.100	-	-
0.3	.01	1.40	.055	2.41	.095	7.04	.277
0.20	.008	0.9	.04	2.29	.090	4.88	.192
0.18	.007	0.84	.033	2.03	.080	3.81	.150
0.13	.005	0.8	.03	1.96	.077	3.43	.135
0.08	.003	0.76	.030	1.83	.072	2.79	.110
0.00508	.000200	0.6	.02	1.57	.062	2.67	.105
MM	IN	MM	IN	MM	IN	MM	IN

CONVERSION TABLE

METRIC

THIS DRAWING IS A CONTROLLED DOCUMENT.

DIMENSIONS:	TOLERANCES UNLESS OTHERWISE SPECIFIED:	DWN	21AUG2003	
mm	0 PLC ±	S. CARPENTER	21AUG2003	
	1 PLC ±	J. ELLIS	21AUG2003	
	2 PLC ± 0.13	J. ELLIS	21AUG2003	
	3 PLC ±	J. ELLIS	21AUG2003	NAME
	4 PLC ANGLES ±	J. ELLIS	21AUG2003	TERMINAL, MINI AMP-IN™ 2000
MATERIAL	FINISH	PRODUCT SPEC	108-1081	SIZE
0.20 PH BRZ		APPLICATION SPEC	114-1016	CAGE CODE
		WEIGHT		DRAWING NO
		CUSTOMER DRAWING		A2 00779 C=794121
		SCALE	10:1	SHEET
				1 OF 1
				REV
				C1