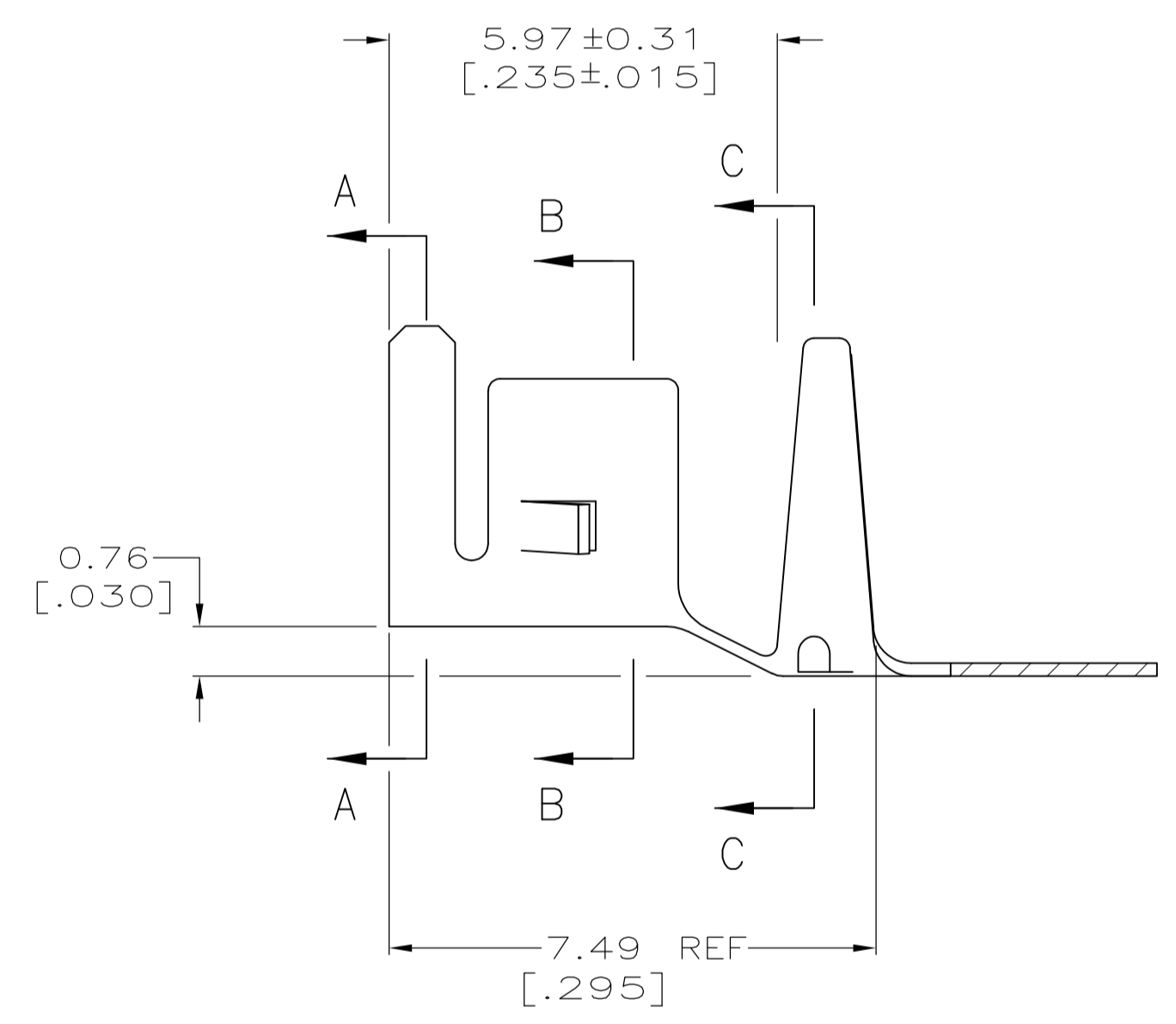
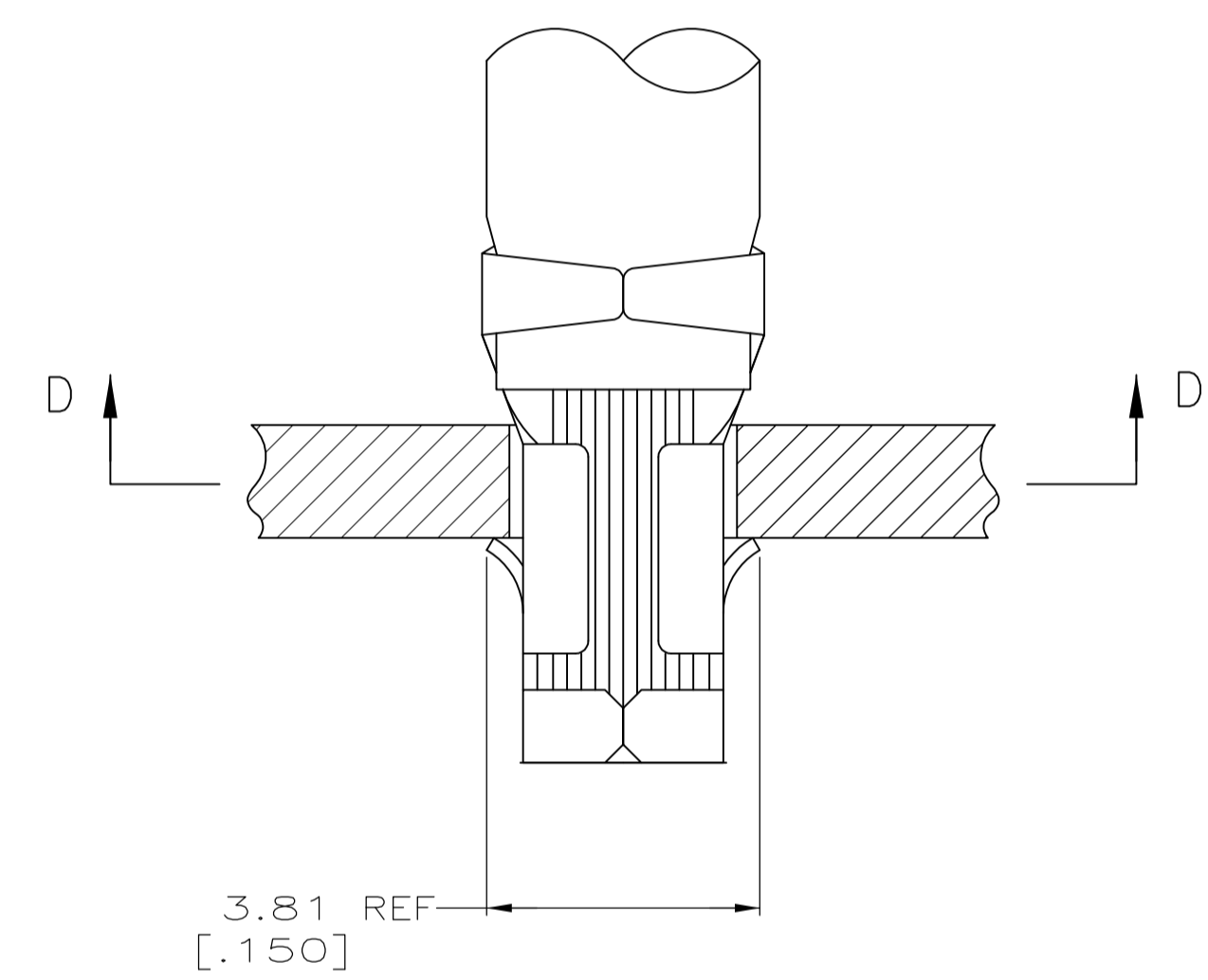


SECTION D-D

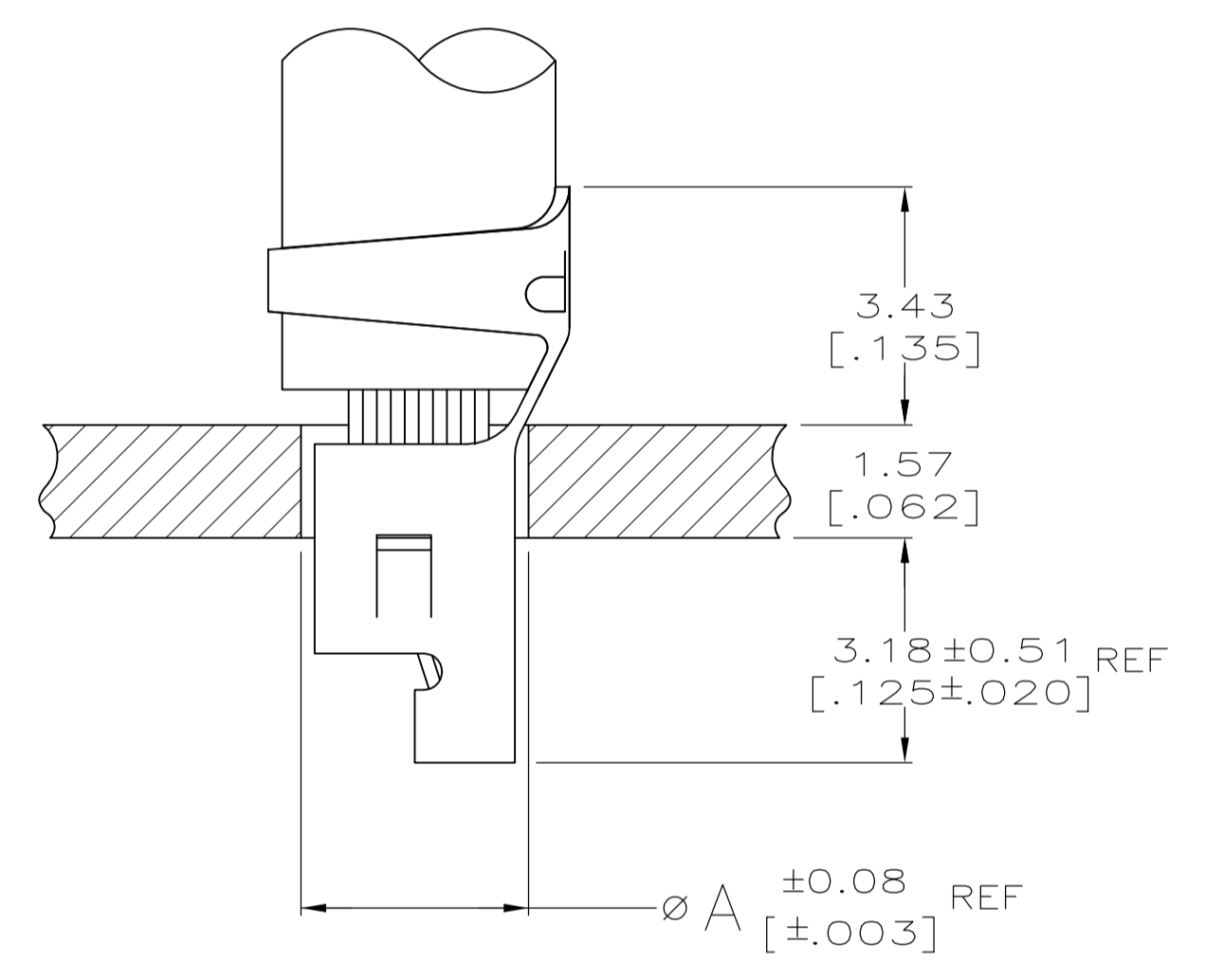
- 1 PARTS COMPLY WITH AMP SOLDERABILITY SPEC 109-11-3.
- 2 WIRE RANGE: 3-5.5 mm² [12-10 AWG].
- 3 INSULATION DIAMETER: 5.08 [.200] MAX.
- 4 DIMENSIONS IN BRACKETS ARE IN INCHES.
- 5 0.00508 [.000200] MIN BRIGHT TIN-LEAD.
- 6 0.00508 [.000200] MIN HALT TIN.



SECTION A-A

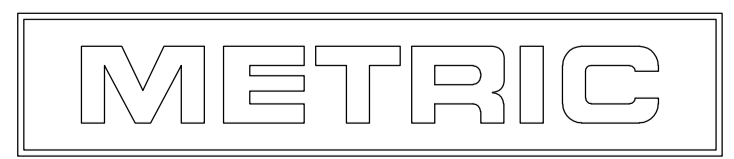
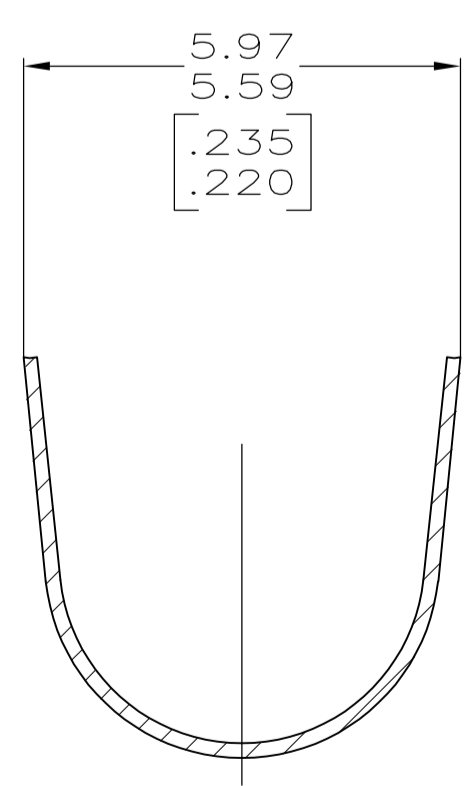
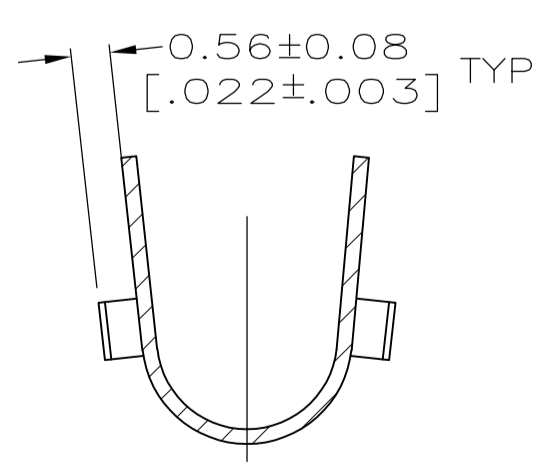
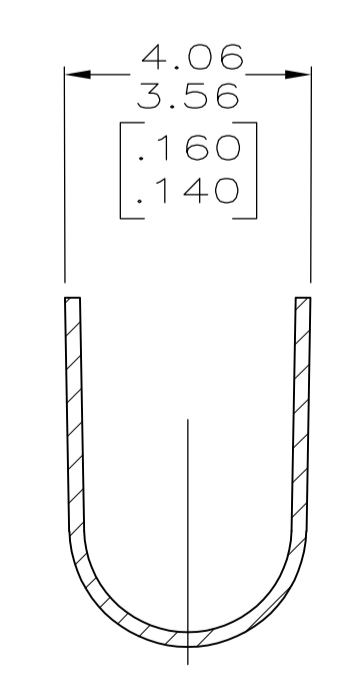


SECTION B-B



SECTION C-C

3.76 [.148]	10
3.18 [.125]	12
A	AWG



THIS DRAWING IS A CONTROLLED DOCUMENT.

DIMENSIONS:	TOLERANCES UNLESS OTHERWISE SPECIFIED:	DWN	S. CARPENTER	22AUG2003
INCHES		CHK	J. ELLIS	22AUG2003
	0 PLC ±	APVD	J. ELLIS	22AUG2003
	1 PLC ±	NAME		
	2 PLC ± 0.13 [.005]	PRODUCT SPEC		
	3 PLC ±	APPLICATION SPEC		
	4 PLC ±	SIZE	CAGE CODE	DRAWING NO
	ANGLES ±	WEIGHT	A1	00779C=794037
MATERIAL	FINISH	CUSTOMER DRAWING	SCALE	10:1
0.198 [.0078] PH BRZ			SHEET	1 OF 1

RESTRICTED TO: -

REV C2



6	3-794037-1
5	794037-1
FINISH	PART NO.