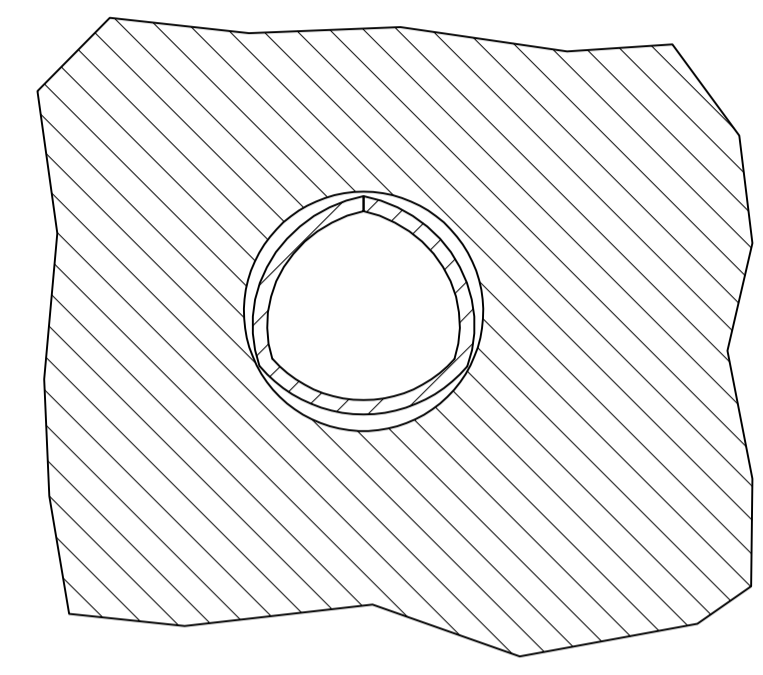
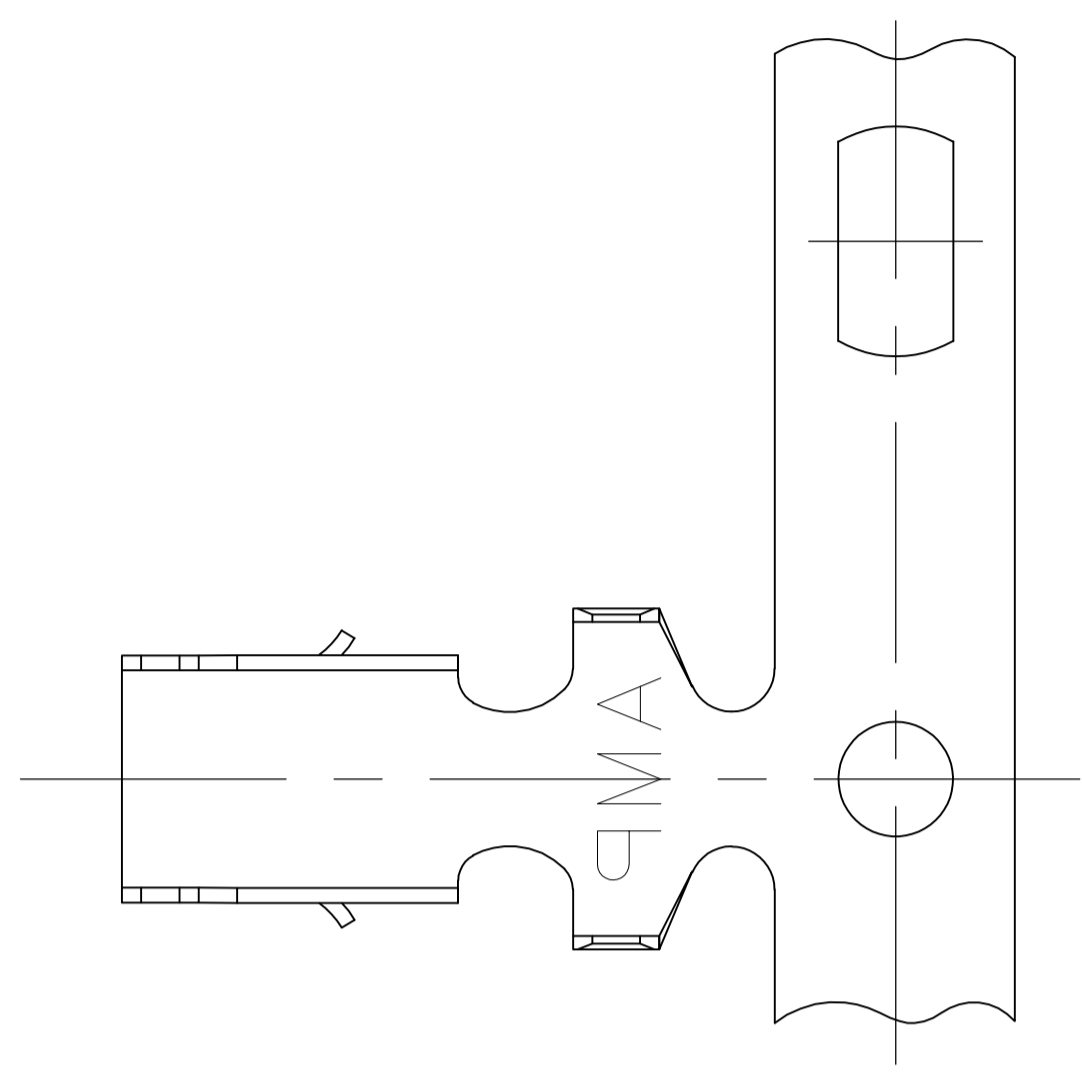
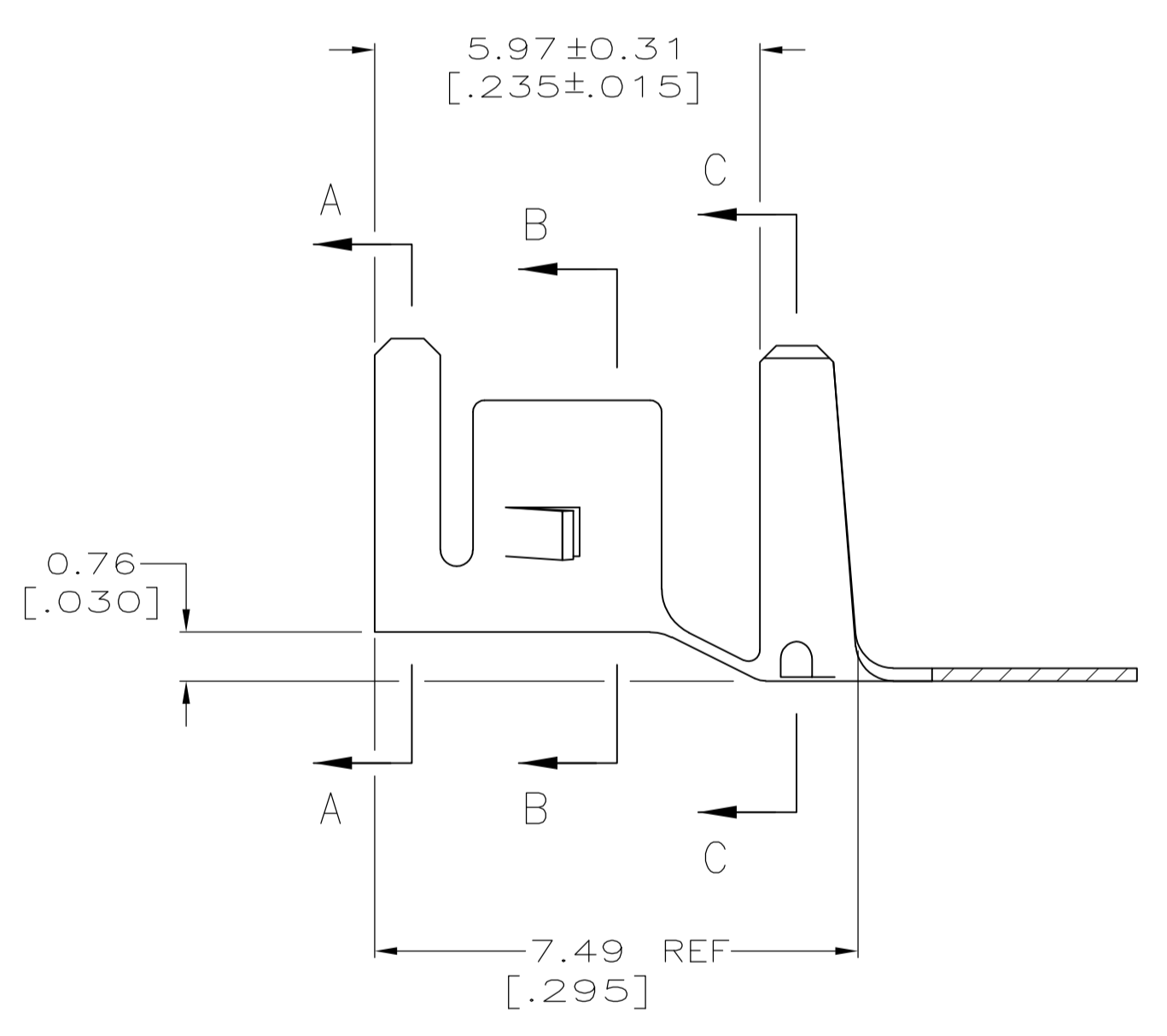


LOC	DIST	REVISIONS			
P	LTR	DESCRIPTION	DATE	DMN	APVD
CM	00	B1	REVISED PER ECO-11-004820	11MAR11	RK HMR

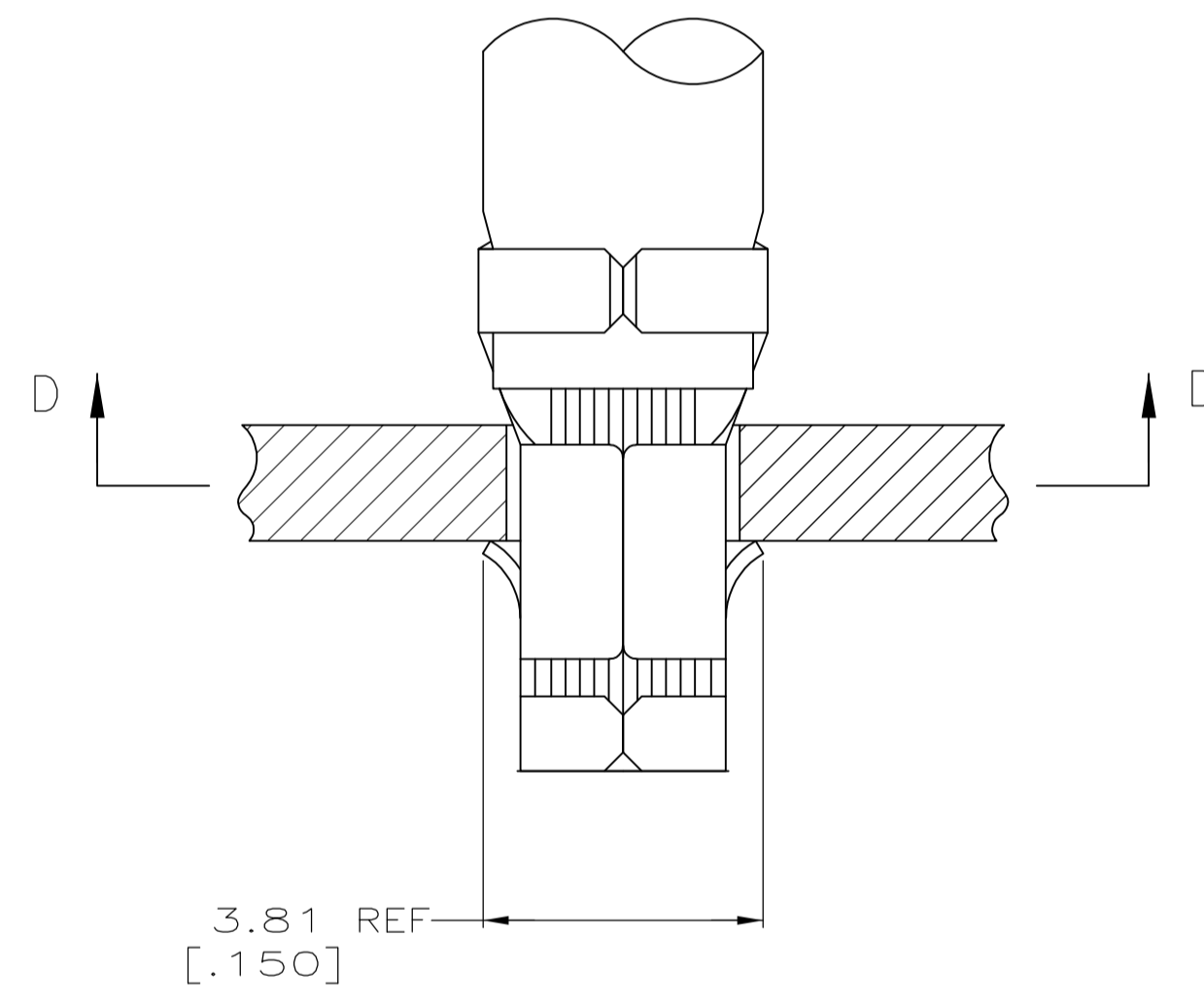


SECTION D-D

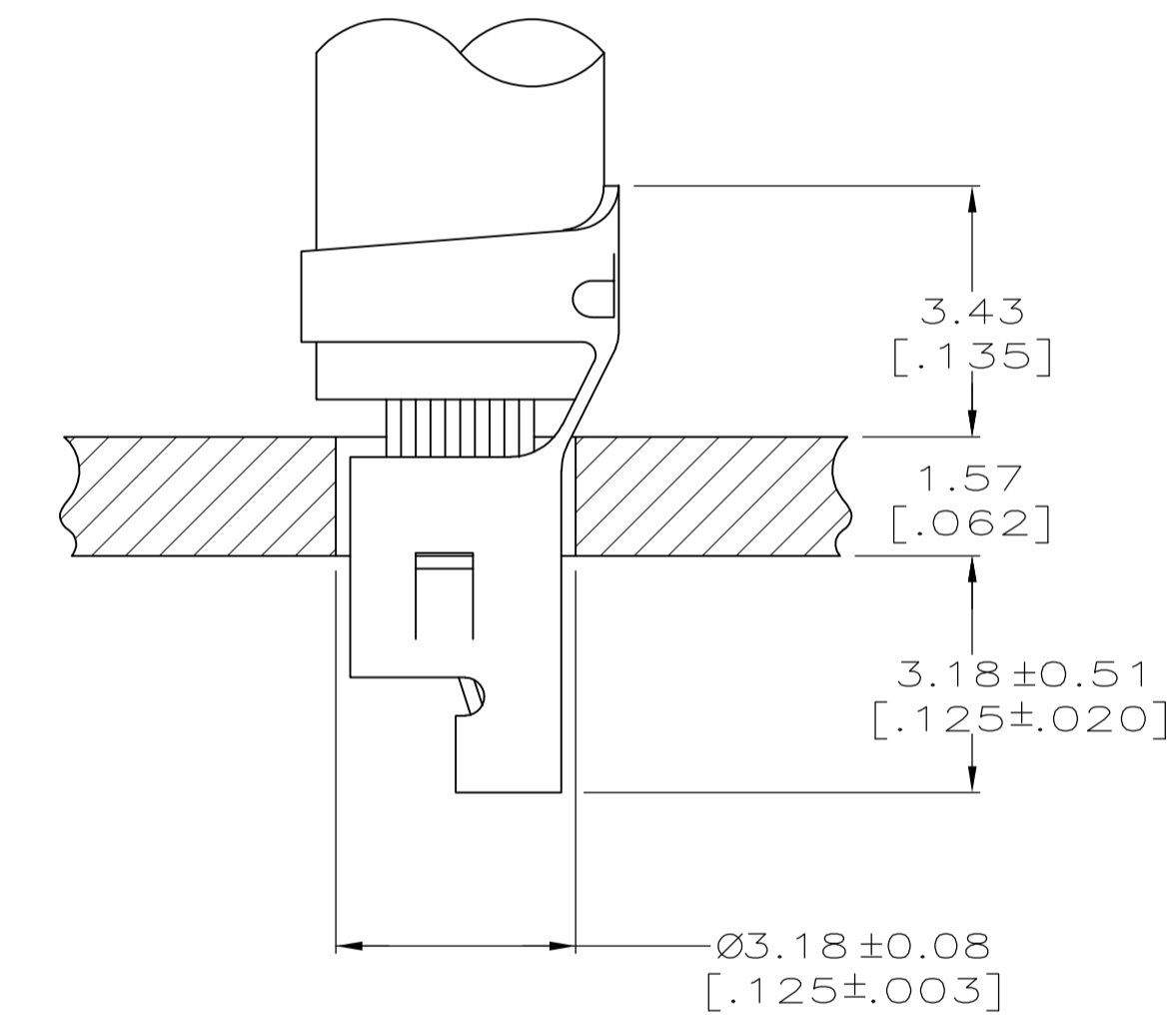
1. PARTS COMPLY WITH AMP SOLDERABILITY SPEC 109-11-5.
2.  $\triangle$  0.00508 [.000200] MIN BRIGHT TIN-LEAD.
3. WIRE RANGE: 3 mm<sup>2</sup> (12 AWG).
4. INSULATION RANGE: 2.29 - 3.81 [.090 - .150] DIA.
5. DIMENSIONS IN BRACKETS ARE IN INCHES.
6.  $\triangle$  0.00508 [.000200] MIN BRIGHT TIN.



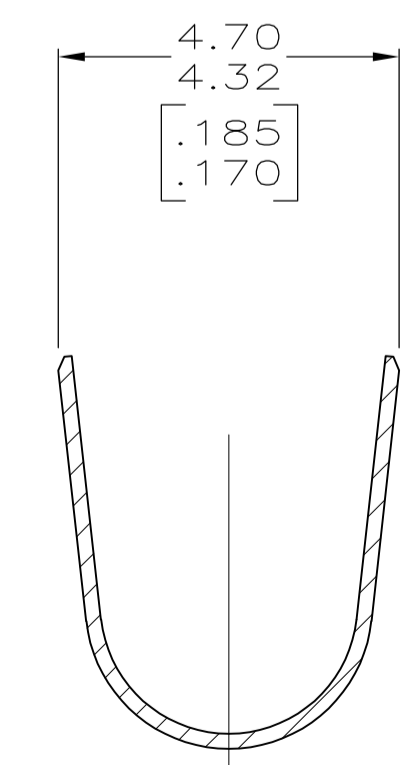
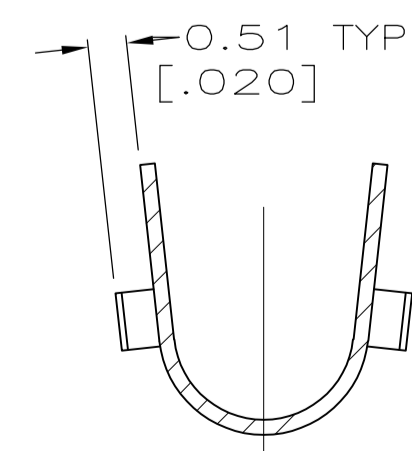
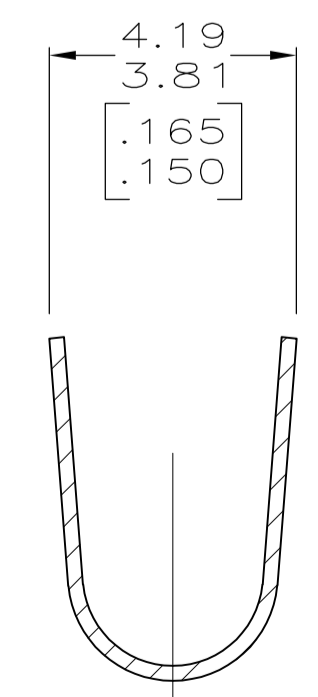
SECTION A-A



SECTION B-B



SECTION C-C



**METRIC**

$\triangle$ 6	3-794013-1
$\triangle$ 2	794013-1
FINISH	PART NO.

THIS DRAWING IS A CONTROLLED DOCUMENT.		DIN S. CARPENTER 21AUG2003		<b>STE</b> TE Connectivity	
DIMENSIONS: INCHES		CHK: J. ELLIS 21AUG2003			
TOLERANCES UNLESS OTHERWISE SPECIFIED:		APVD: J. ELLIS 21AUG2003		NAME: TERMINAL, AMP-IN	
0. PLC	±	PRODUCT SPEC		APPLICATION SPEC	
1. PLC	±	SIZE: 114-1016		RESTRICTED TO	
2. PLC	± 0.13 [.005]	WEIGHT: A1 00779 C=794013		SCALE: 10:1 SHEET 1 OF 1 REV B1	
3. PLC	±	CUSTOMER DRAWING			
4. PLC	±				
ANGLES	±				
MATERIAL: 0.198 [.0078] PH BRZ	FINISH:				