

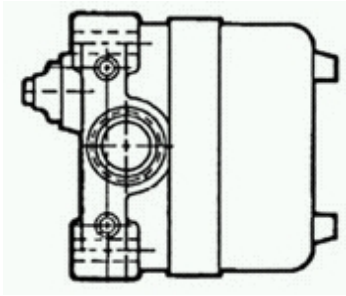


Home > Products > MICRO SWITCH™ Hazardous Location Switches > CX Product Page

### Order Product and Get Support

- U.S. Authorized Distributors
- Global Sales & Service
- N. American Sales Reps
- Distributor Inventory
- Technical Assistance
- White Papers
- Literature Request
- Test and Measurement Catalog
- RoHS Product List
- Customer Feedback

## 36CX1



Actual product appearance may vary.

**Explosion-Proof Limit Switches Series CX: Short Housing: Top Plunger; 1NC 1NO SPDT Snap Action; Number of internal basic switches HS: 1; 0.75 in - 14NPT conduit**

### Features

Sealing- applicable portions of NEMA 1, 3, 4, 4X, 6, 6P, 7, 9, and 13  
 Watertight and dust-tight for outdoor use  
 4 mA to 20 mA analog output available  
 UL Listed, file #E14274  
 Analog UL file #E68247  
 CSA Certified, file #LR57324  
 Rugged, cast aluminum housing  
 Pretravel, overtravel, and actuating sequence can be field adjusted without tools (all basics individually)  
 Rotary types convert in seconds to clockwise, counter-clockwise, or both-way operation

### Potential Applications

Control valves and actuators  
 Petro-chemical plants  
 Grain handling  
 Waste treatment  
 Hazardous waste handling  
 Power generating  
 Paint facilities

### Description

MICRO SWITCH™ CX switches are built especially for outdoor use in hazardous atmospheres. These enclosures are constructed to withstand the pressure of an internal explosion. Flame paths cool the exploded gases to a point less than the lowest safe operating temperature of the surrounding gas.

### Supporting Documentation

[Installation Instructions](#)

[Engineering Drawing](#)

Product Specifications	
Availability	Global
Operating Force (O.F.)	4,0 Kg [8.82 lb] max.
Pretravel (P.T.)	2,5 mm max. [0.1 in max.]
Overtravel (O.T.)	4,75 mm min. [0.187 in min.]
Differential Travel (D.T.)	1.0 mm [0.04 in] max.
Product Type	MICRO SWITCH™ Weather Sealed, Explosion - Proof Limit Switches
Actuator	Plunger
Circuitry	1NC 1NO SPDT Snap Action; 1 Basic Switch
Ampere Rating	1 A Ind.
Supply Voltage	120 Vac
Housing Material	Aluminum
Termination Type	0.75 in - 14NPT conduit
Housing Type	CX: Short: 104 mm [4.09 in]
Series Name	CX
Sealing	NEMA 1, 3, 4, 4x, 6, 6P, 7 (Class I, Division 1, Groups B, C, D), 9 (Class II, Division 1, Groups E, F, G), 13
Approvals	UL listed, CSA Certified
CSA File #	LR57324
UL File #	E14274
Operating Temperature Range	-25 °C to 85 °C [ -13 °F to 185 °F]
Comment	Switch element hermetic sealed
UNSPSC Code	302119
UNSPSC Commodity	302119 Switches and controls and relays
Sealed	Explosion - proof

### My Links

[Login to iCOM](#)  
[Login as Rep/AD](#)  
[Login as Guest](#)  
[Login to Digital University](#)

### Keyword Search

Search for product and support information.

All Sensing and Control

### Product Search

Part number search:

Use (\*) to expand search

[Specification Search](#)