



HONEYWELL

3685901

See full Datasheet below...

onlinecomponents.com

THE ONLINE DISTRIBUTOR OF ELECTRONIC COMPONENTS

BUY NOW



MASTERTM
ELECTRONICS

BUY NOW

masterelectronics.com & onlinecomponents.com
are **authorized** e-commerce distributors
of electronic components.


REVISIONS		
REV	DESCRIPTION	DATE APPROVED
W	DCN 99-327	7/2/98

NOTES:

1. USE WITH PACKARD TERMINALS ON D.I. DRAWING A22032.
2. UNLESS OTHERWISE NOTED ALL DIMENSIONS ARE IN MILLIMETERS

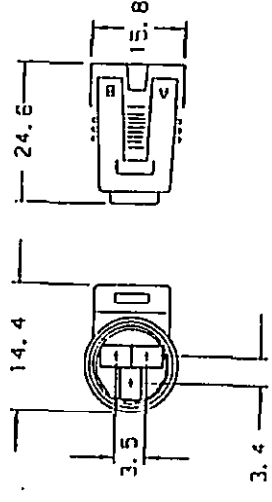
MANUFACTURER:
PACKARD ELECTRIC

ITEM NO.	REV	MFR. P/N	DESCRIPTION
2203105	G	15383059	CONNECTOR, SEAL
2203104	B	12065286	CONNECTOR, HOUSING, FEMALE, 3 POS. BLK
2203103	B	12110072	SILICONE CABLE SEAL, TAN, 22 AWG
2203102	B	12065285	SILICONE CABLE SEAL, DK RED, 18 AWG
2203101	B	12065287	CONNECTOR, HOUSING, FEMALE, ASSEMBLED, 3 POS, BLK

UNLESS OTHERWISE SPECIFIED DIMENSIONS ARE IN INCHES	DRAWN L. HUNTING	DATE 7/98	 DATA INSTRUMENTS ACTON, MA 01720 USA
TOLERANCES: .X ± .1 FRACTIONS ± 1/64 .XX ± .01 ANGLES ± 2° .XXX ± .005	CHK Z. D. I. E. S.	12/16/95	
GENERAL SURFACE FINISH ✓ RMS MAX	DES. ENG. [Signature]	APPROVALS	TITLE
REMOVE ALL BURRS SHARP EDGES R MAX INSIDE CORNERS R MAX	MFG. ENG. [Signature]	12/16/99	CONNECTOR, SEALS, & SEAL PLUG PACKARD ELECTRIC METRI-PACK
MATERIAL:	REL [Signature]	12/16/99	CODE IDENT SIZE DRAWING NUMBER REV
FINISH:			A 22031 TAB
			SCALE N/A SHEET 1 OF 2

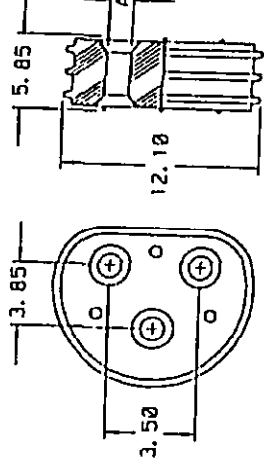
ORIGINAL DWG

GENDER - F
MATERIAL - NYL 6/6
COLOR - BLK
TYPICAL TERMINAL - 12047680
MAX. INSUL. CRIMP - 2.54 HIGH X 2.68 WIDE
MATING PART - THROTTLE POSITION
SENSOR

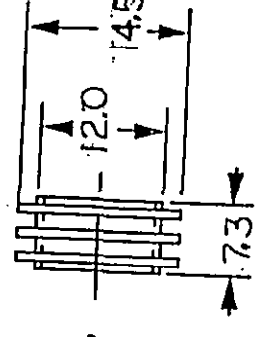


ASSEMBLY	COMPONENTS
12065287 ASM	12065286 CONN 12062893 CONN SEAL 12065285 CABLE SEAL

MATERIAL - SIL SELF LUB.



PART NO.	COLOR	"A" DIA	CABLE DIA	MATING PART
12065285	DK RED	1.70 - 1.50	2.40 - 2.03	12065287
12110072	TAN	1.30 - 1.10	1.68 - 1.42	12110192



PART NO,
15383059

MATERIAL - SIL SELF LUB.

CODE IDENT	SIZE	DRAWING NUMBER	REV
	A	22031	TAB
SCALE	N/A	SHEET 2	OF 2

ORIGINAL DWG