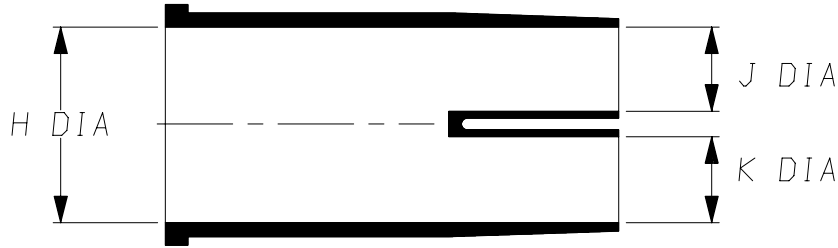
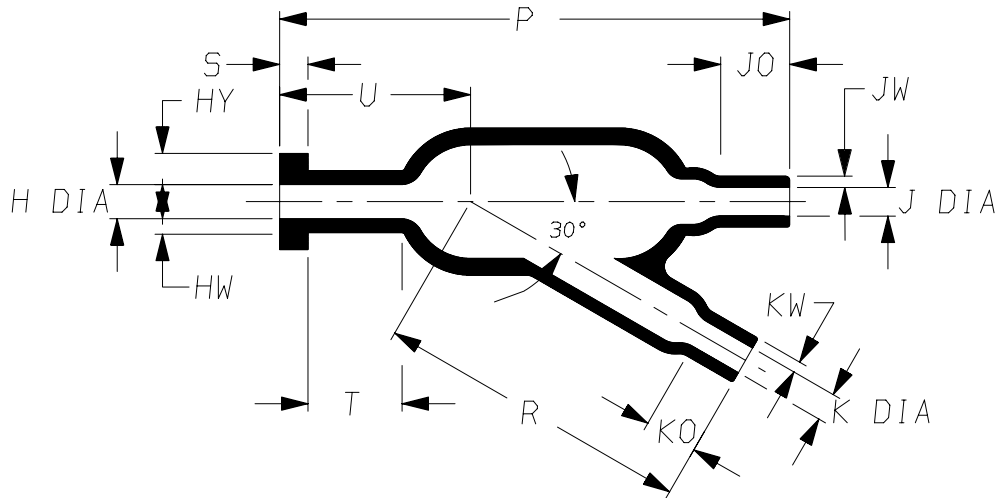


a) Part as supplied

362W204



b) Part after unrestricted recovery



DIMENSIONS in millimetres
(in inches, for reference)

	H		J		K		P	R	S	T	U	HY	HW	JO	JW	KO	KW
Part	MIN	MAX	MIN	MAX	MIN	MAX	±10%	±10%	±10%	±10%	±10%	±10%	±20%	±20%	±20%	±20%	±20%
Number	a	b	a	b	a	b	b	b	b	b	b	b	b	b	b	b	b
362W204	26 (1.02)	6.3 (0.25)	18 (0.71)	5.3 (0.21)	18 (0.71)	5.3 (0.21)	90 (3.54)	56 (2.20)	5.0 (0.20)	18.5 (0.73)	34 (1.34)	5.5 (0.22)	2.5 (0.10)	11 (0.43)	2.0 (0.08)	11 (0.43)	2.0 (0.08)

SUPERSEDED

Copyright (!)

The copyright in this drawing is the property of Tyco Electronics UK Ltd. The drawing is issued on the condition that it is not copied, reproduced or disclosed to a third party, either in whole or in part without the prior written consent of Tyco Electronics UK Ltd.

Drawn A.LILLEY. Checked

Issue 4

Date May 2008

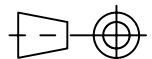
Conforms to ISO Recommendations

Approval
Design

MKTG.

Tech.

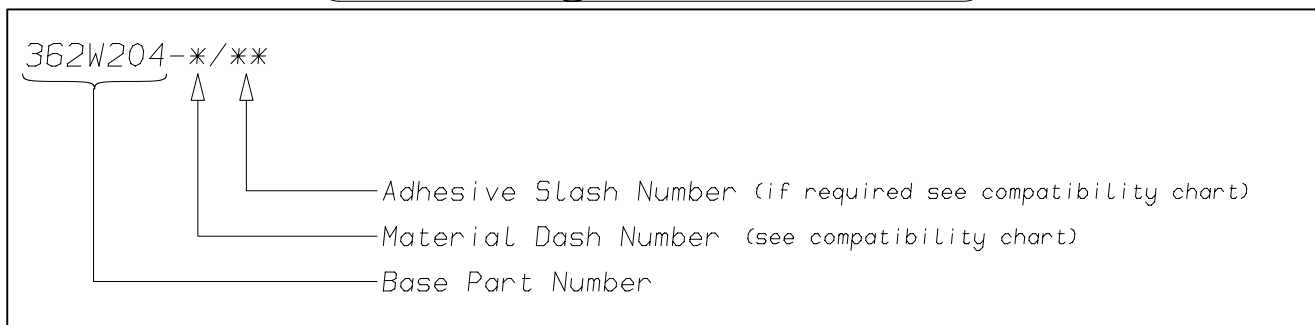
3rd Angle Projection
Not to Scale



**NOT the LATEST
REVISION**

Raychem		Specification Control Drawing	Part Number 362W204 Issue 4
Iss.	Date	E.C.R. No.	Details of Change
2	May 1994	H0202	Ja & Ka was 13
3	February 2008	CR08-HM-003	Dimension "T" added.
4	May 2008	CR08-HM-011	Jo & Ko toll was 10%, & JW & KW was 1.5

(Ordering Information)



(COMPATIBILITY CHART)

Material Dash Number	Material Description	SPEC Number	Coating Slash Number
-3	POLYOLEFIN, SEMI-RIGID	RT-301	/42, /86
-4	POLYOLEFIN, FLEXIBLE	RT-1304	/42, /86
-25	ELASTOMER, FLUID RESISTANT	RW-2070	/42, /86, /225
-130	POLYOLEFIN, COMMERCIAL FLEXIBLE	RW-2008	/42

NOTES

- ① As supplied dimensions are for uncoated parts, when coating is added entry diameters will reduce by 1.5mm Max.

Tyco Electronics UK Ltd. Faraday Road, Swindon, Wiltshire, SN3 5HH England Telephone: (01793) 528171 Fax: 572516	Tyco Electronics Corporation 300, Constitution Drive, Menlo Park, CA 94025 USA Telephone (650) 361-3860 Fax: (650) 361-5579
Cage Code K1010	Cage Code 06090