

SECTION 14

# INSTALLATION AND ASSEMBLY TOOLS



For standard, High Density  
and Combination D-SUB  
Connector series

CONEC offers a variety of special tools to facilitate the reliable, rational assembly of contacts and connectors in its line of input/output connectors. These tools are practice-proven and ensure the optimal handling of our products.



For technical support and handling technic  
please contact the factory.

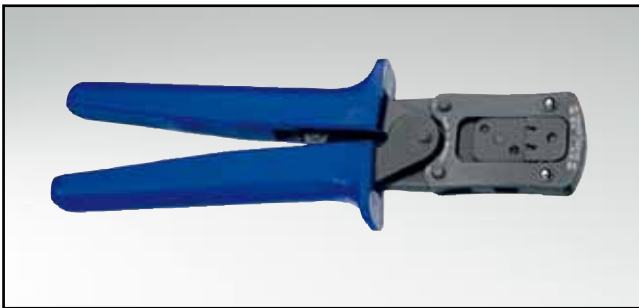




DESCRIPTION \_\_\_\_\_

**Installing tool**  
for D-SUB High Density contacts

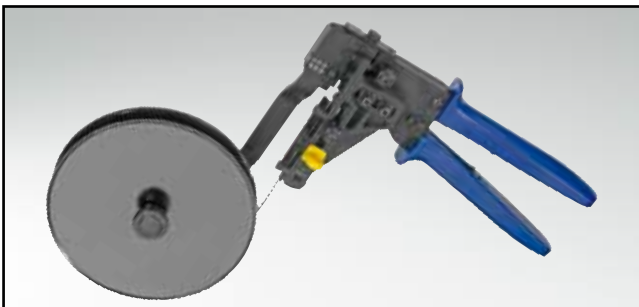
**Part Number**            360x10339x



DESCRIPTION \_\_\_\_\_

**Crimp tool**  
for D-SUB standard stamped and formed contacts

**Part Number**            360 X 10079 X



DESCRIPTION \_\_\_\_\_

**Spool Crimp tool**  
for D-SUB stamped and formed contacts

**Part Number**            360 X 10069 X



DESCRIPTION \_\_\_\_\_

**Insertion and extraction tool**  
for D-SUB crimp signal contacts

**Part Number**            360 X 12009 X



DESCRIPTION \_\_\_\_\_

Hand Crimp tool for high power contacts

Part Number 360 X 10409 X



DESCRIPTION \_\_\_\_\_

Insert for above hand crimp tool

Part Number 360 X 20029 X



DESCRIPTION \_\_\_\_\_

Extraction tool  
for D-SUB coaxial, high power and high voltage contacts  
for DIN EN 60603-2 high power and coaxial contacts

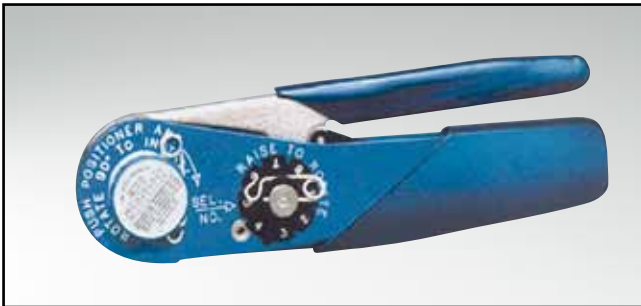
Part Number 360 X 10219 X



DESCRIPTION \_\_\_\_\_

Hand Crimp tool  
for high power contact (solder / crimp)

Part Number 360 X 12269 X



DESCRIPTION \_\_\_\_\_

**Hand Crimp tool**  
for coaxial contacts (inner conductor) and D-SUB signal crimp contacts standard and High Density (Inserts must be ordered separately)

**Part Number**                    360 X 10329 X



DESCRIPTION \_\_\_\_\_

Inserts for above hand crimp tool

**Inserts for hand crimp tool  
for use with hand crimp tool 360X10329 X**

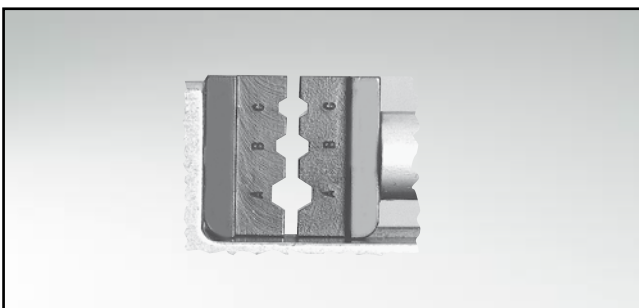
Plug Connector	Socket connector	Tool insert	Insert cavity			
131 C 15019 X	132 C 15019 X	360 X 20039 X	depends on wire select cavity			
131 C 15029 X	132 C 15029 X	360 X 20039 X				
131 J 21019 X	132 J 21019 X	360 X 11049 X				
131 J 21029 X	132 J 21029 X	360 X 11049 X	AWG    Cavity			
131 J 21039 X	132 J 21039 X	360 X 11049 X				
131 J 23019 X	132 J 23019 X	360 X 11059 X				
131 J 31019 X	132 J 31019 X	360 X 11049 X			24	→ 5
131 J 31029 X	132 J 31029 X	360 X 11049 X			26	→ 5
131 J 33019 X	132 J 33019 X	360 X 11059 X			28	→ 4
161 A 18009 X	162 A 18419 X	360 X 10629 X	30	→ 3		
	162 A 18709 X	360 X 20069 X				
	162 A 18719 X	360 X 20069 X				



DESCRIPTION \_\_\_\_\_

**Hand Crimp tool**  
for coaxial contacts (outer conductor),  
(Inserts must be ordered separately)

**Part Number**            360 X 10519 X



DESCRIPTION \_\_\_\_\_

**Inserts for above hand crimp tool**

**Inserts for hand crimp tool coaxial contacts (outer conductor)  
for use with hand crimp tool 360 X 10519 X**

Plug Connector	Socket connector	Tool insert	Insert cavity
131 J 20019 X	132 J 20019 X	360 X 11019 X	C
131 J 20029 X	132 J 20029 X	360 X 11019 X	B
131 J 20039 X	132 J 20039 X	360 X 11019 X	A
131 J 20049 X	132 J 20049 X	360 X 11029 X	A
131 J 20059 X	132 J 20059 X	360 X 11039 X	B
131 J 21019 X	132 J 21019 X	360 X 11019 X	B
131 J 21029 X	132 J 21029 X	360 X 11039 X	B
131 J 21039 X	132 J 21039 X	360 X 11029 X	A
131 J 22019 X	132 J 22019 X	360 X 11019 X	B
131 J 22029 X	132 J 22029 X	360 X 11019 X	C
131 J 22039 X	132 J 22039 X	360 X 11039 X	B
131 J 23019 X	132 J 23019 X	360 X 11019 X	B
131 J 30019 X	132 J 30019 X	360 X 11019 X	B
131 J 30029 X	132 J 30029 X	360 X 11019 X	B
131 J 31019 X	132 J 31019 X	360 X 11019 X	B
131 J 31029 X	132 J 31029 X	360 X 11019 X	A
131 J 33019 X	132 J 33019 X	360 X 11019 X	B



**DESCRIPTION** \_\_\_\_\_

Manually operated lever press

Part Number 360 X 12369 X

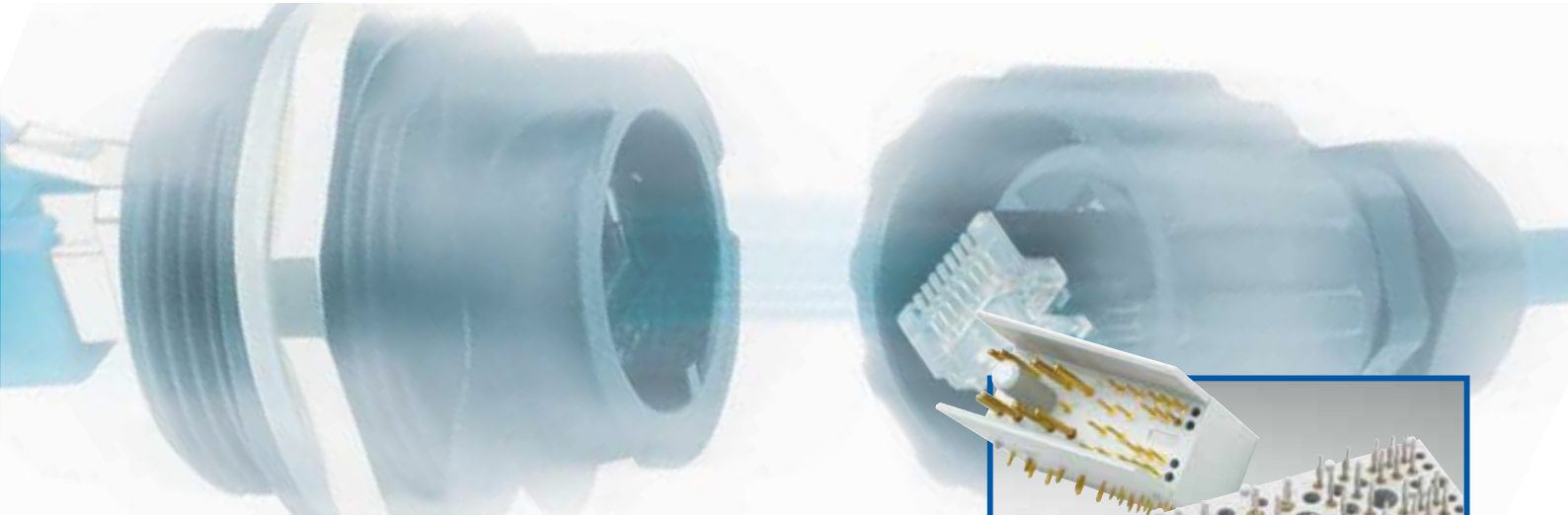


**DESCRIPTION** \_\_\_\_\_

**PRESS IN TOOL SETS**

Design	Type	Part Number
Combination D-SUB Connectors	2W2C	360 X 00159 X
Combination D-SUB Connectors	3W3	360 X 00169 X
Combination D-SUB Connectors	3W3C	360 X 00169 X
Combination D-SUB Connectors	5W5	360 X 00179 X
Combination D-SUB Connectors	8W8	360 X 00189 X
Plug Connector	9 pos. /15 pos. HD	360 X 15019 X
Plug Connector	15 pos. /26 pos. HD	360 X 15029 X
Plug Connector	25 pos. /44 pos. HD	360 X 15039 X
Plug Connector	37 pos. /62 pos. HD	360 X 15049 X
Plug Connector	50 pos. /78 pos. HD	360 X 15059 X
Socket Connector	9 pos. /15 pos. HD	360 X 15069 X
Socket Connector	15 pos. /26 pos. HD	360 X 15079 X
Socket Connector	25 pos. /44 pos. HD	360 X 15089 X
Socket Connector	37 pos. /62 pos. HD	360 X 15099 X
Socket Connector	50 pos. /78 pos. HD	360 X 15109 X





# Connecting with quality

CONEC – the specialist for connecting technology in

- Filter technology (EMI/RFI)
- Connectors for harsh environments
- Combination connectors (Power and Coax)
- Connectors referring to PICMG standard (ATCA,  $\mu$ TCA, CPCI)
- M12 circular connectors for High Temp, Food+Beverage amongst others

CONEC offers the ideal solution for your application too. Ask for information right now!

**CompactPCI<sup>®</sup>**

**$\mu$ TCA<sup>™</sup>**

**Advanced TGA**

Member of **PICMG**

