

FLAT CABLE

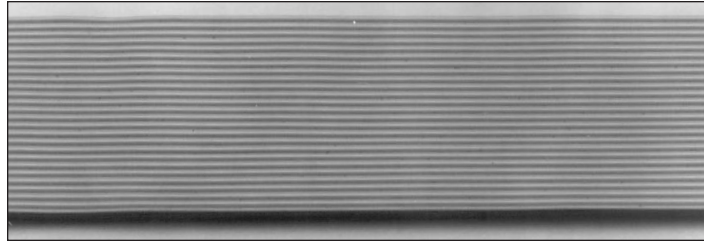
GRAY FLAT CABLE

0.025" CENTERS

150 VOLT
UL STYLE 2962
RoHS COMPLIANT

GRAY FLAT CABLE APPLICATIONS:

- Easy Termination to 0.025" IDC Connectors
- For Situations Where Reduced Crosstalk is Necessary such as High-Speed Data Transmissions in Computers, Cash Registers and Communications Equipment



CHARACTERISTICS

OPERATING TEMPERATURE:

- -20°C to 105°C

VOLTAGE RATING:

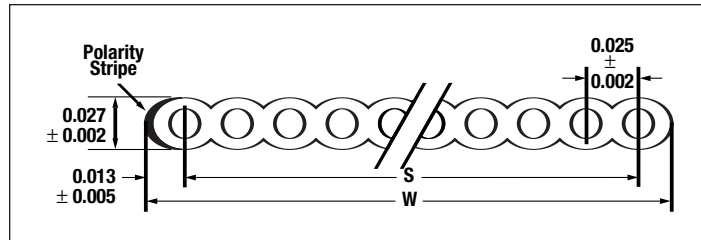
- 300 Volt

COLOR DESCRIPTION:

- Color Code: Gray with Red Stripe on Leading Edge

PRODUCT DESCRIPTION:

- Conductor: Solid Bare Copper Conductors on 0.025" (0,64mm) Centers
- Insulation: PVC



30 AWG Solid, Insulation Thickness: **0.010"** (0,25mm)

Alpha Part No.	No. of Conductors	Nominal Overall Width (W)		Nominal Span (S)	
		Inches	mm	Inches	mm
3582/26	26	0.650 ± 0.007	16,51 ± 0,18	0.625 ± 0.007	15,88 ± 0,18
3582/40	40	1.00 ± 0.007	25,40 ± 0,18	0.975 ± 0.007	24,76 ± 0,18
3582/50	50	1.25 ± 0.010	31,75 ± 0,25	1.225 ± 0.007	31,15 ± 0,18
3582/60	60	1.50 ± 0.010	38,10 ± 0,25	1.475 ± 0.007	37,46 ± 0,18

SPECIFICATIONS

- Capacitance: 25 pF/ft (82 pF/m) Nom. at 1KHz
- Time Delay: 1.62 ns/ft
- Impedance: 80 Ohms
- UL AWM Style 2962
- RoHS Compliant



AVAILABILITY

- 100 ft (30,5m) put-ups may contain multiple lengths



Toll Free: 1-800-52 ALPHA • Telephone: 908-925-8000 • Fax: 908-925-6923
Europe/UK Telephone: +44 (0) 1932 772422 • Europe/UK Fax: +44 (0) 1932 772433

Web Site: www.alphawire.com
Email: info@alphawire.com