

## STANDARD APPLIANCE ROCKERS



Fig. 1



Fig. 2



On/Off

Fig. 3



Fig. 4



Fig. 5



Fig. 6

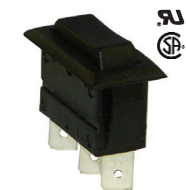


Fig. 7

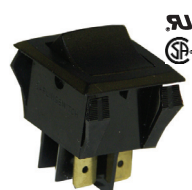


Fig. 8

Retail Part No.	Bulk Part No.	Fig. No.	Circuit Function	Poles/Throws	AMPS 125VAC	AMPS 250VAC	Actuator Color	Actuator Material	Imprinting Color and Marking	Mounting Hole	Spec. Drawing Page No.
35-3760	35-3760-BU	1	(On) Off	SPST	15*	10	White	Nylon		0.550 x 1.125	283-A
35-691	35-691-BU	2	On Off	SPST	16	10	Black	Nylon		0.550 x 1.125	283-B & 283-C
35-693	35-693-BU	3	On Off	SPST	16	10	Black	Nylon	Red On/Off	0.550 x 1.125	283-B
35-694	35-694-BU	2	On Off On	SPDT	16	10	Black	Nylon		0.550 x 1.125	283-B & 283-C
35-3030	35-3030-BU	3	On Off	SPST	16	10	Black	Nylon	Red On/Off	0.550 x 1.125	283-B

Retail Part No.	Bulk Part No.	Fig. No.	Circuit Function	Poles/Throws	AMPS 125VAC	AMPS 250VAC	HP 125/250VAC	Actuator Material	Imprinting Color and Marking	Mounting Hole	Spec. Drawing Page No.
35-3600	35-3600-BU	4	On Off	SPST	15	10	3/4	Black Nylon		0.830 x 1.450	283-D
35-3610	35-3610-BU	4	On On	SPDT	15	10	3/4	Black Nylon		0.830 x 1.450	283-D
35-3620	35-3620-BU	4	On Off On	SPDT	15	10	3/4	Black Nylon		0.830 x 1.450	283-D
35-3630	35-3630-BU	4	On Off	DPST	15	10	3/4	Black Nylon		0.830 x 1.450	283-D
35-3636	35-3636-BU	4	On Off	SPST	20	†	1-1/2	Black Nylon		0.830 x 1.450	283-D
35-3640	35-3640-BU	4	On On	DPDT	15	10	3/4	Black Nylon		0.830 x 1.450	283-D
35-3650	35-3650-BU	4	On Off On	DPDT	15	10	3/4	Black Nylon		0.830 x 1.450	283-D
35-3660	35-3660-BU	4	(On) Off	DPST	15	10	3/4	Black Nylon		0.830 x 1.450	283-D
35-3670	35-3670-BU	4	(Off) On	DPST	15	10	3/4	Black Nylon		0.830 x 1.450	283-D
35-3680	35-3680-BU	4	(On) On	DPDT	15	10	3/4	Black Nylon		0.830 x 1.450	283-D
35-3690	35-3690-BU	4	(On) Off On	DPDT	15	10	3/4	Black Nylon		0.830 x 1.450	283-D
35-3695	35-3695-BU	4	(On) Off (On)	DPDT	15	10	3/4	Black Nylon		0.830 x 1.450	283-D
35-3710	35-3710-BU	4	On Off	SPST	16	10	3/4	Black Nylon		0.550 x 1.125	283-B & 283-C
35-3720	35-3720-BU	4	On On	SPDT	16	10	3/4	Black Nylon		0.550 x 1.125	283-B & 283-C

Retail Part No.	Bulk Part No.	Fig. No.	Circuit Function	Poles/Throws	AMPS 125VAC	AMPS 250VAC	HP 250 VAC	Actuator Material	Imprinting Color and Marking	Mounting Hole	Spec. Drawing Page No.
35-620	35-620-BU	5	On Off	DPST	15	10	1/4	Red Poly	White On/Off	0.866 x 1.102	283-E
35-640	35-640-BU	6	On On	SPDT	16	16	1	Black Nylon		0.453 x 1.10	283-F
35-695	35-695-BU	7	(On) Off (On)	SPDT	16	16	1	Black Plastic		0.551 x 1.12	283-F
35-654	35-654-BU	8	On Off	DPST	20	15	N/R	Black Plastic		1.000 x 1.125	283-G

Notes: (On)=Momentary On  
\*3/4 H.P. @ 125/250VAC

N/R= Not Rated  
All of the Above have Quick Connect .250" Terminals

†=20A @ 277VAC and 2 H.P. @ 250VAC

Note: All figures are for illustration purpose only, and the number/type of terminals may vary.

## STANDARD APPLIANCE ROCKERS (Cont.)

