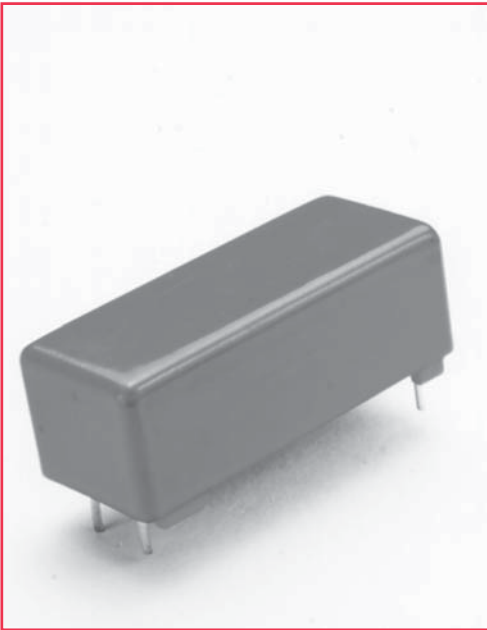


3500 Series/Low Thermal EMF Reed Relays

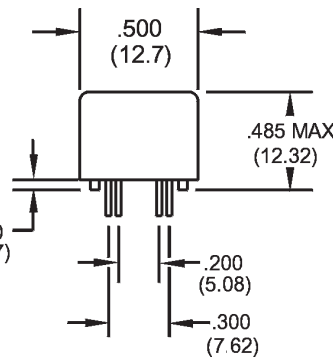
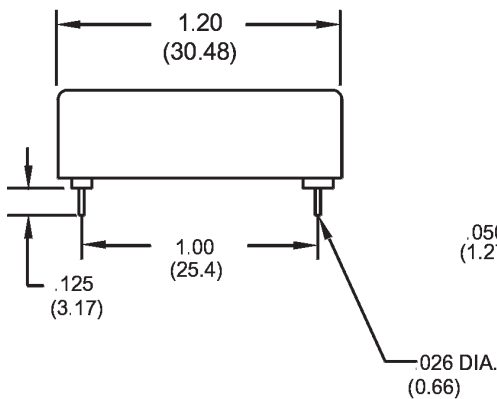


Low Thermal EMF Reed Relays

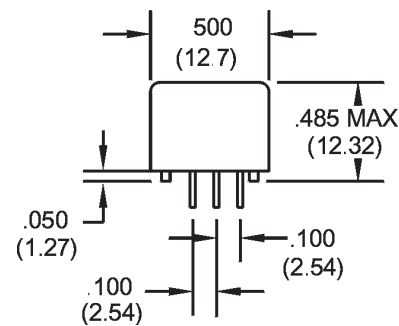
The 3500 Series is ideally suited to the needs of Instrumentation, Data Acquisition and Process Control. The specification tables allow you to select the appropriate relay for your particular application. Recommended for use in high accuracy DVM's, Multiplexers and Digital or Analog Multipoint Recorders. If your requirements differ from the selection options, please consult Coto's Factory to discuss a custom reed relay.

3500 Series Features

- ◆ Low Thermal EMF: $< 10 \mu\text{V}$ through $< 0.5 \mu\text{V}$ with 50 nV stability
- ◆ Patented Low Thermal Design. U.S. Patent #4,084,142
- ◆ Low power coils to ensure low thermal EMF
- ◆ High Insulation Resistance - $10^{12} \Omega$
- ◆ Control/Signal isolation of 1500 VDC
- ◆ High reliability, hermetically sealed contacts
- ◆ Form A, Dry or Hg Wet contacts. High Dielectric Strength
- ◆ Epoxy coated steel shell provides magnetic shielding



(For Model #'s
3501 & 3540)



(For Model #'s
3502, 3520, 3541)



Bottom View

Dimensions in Inches (Millimeters)

Ordering Information

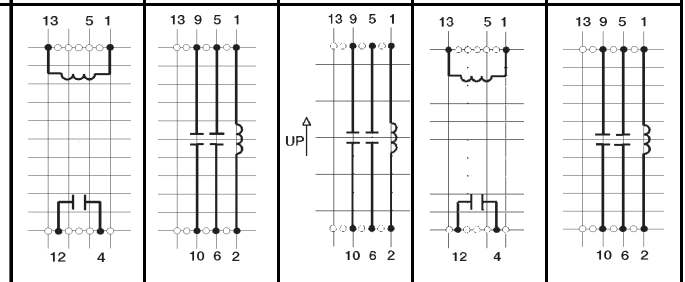
Part Number	XXXX-XX-X1X	Shielding Options ²
Model Number	3501 3502 3520 3540 3541	0 = No Electrostatic Shield 1 = Electrostatic Shield
Coil Voltage	05 = 5 volts 12 = 12 volts	Thermal EMF Rating See available ratings in specification table.

- 1 = $< 10 \mu\text{V}$ Hg Wet Only
- 9 = $< 5 \mu\text{V}$ Dry or Wet
- 8 = $< 3 \mu\text{V}$ Dry only
- 7 = $< 1 \mu\text{V}$ Dry only
- 5 = $< 0.5 \mu\text{V}$ Dry only

3500 Series/Low Thermal EMF Reed Relays

Model Number			3501 ²		3502 ²		3520 ^{2,3}		3540 ²		3541 ²	
Parameters	Test Conditions	Units	1 Form A		2 Form A		2 Form A Hg Wet		1 Form A High Voltage		2 Form A High Voltage	
THERMAL EMF OPTIONS	Measured after 5 minutes at nominal coil voltage Refer to Reed Relay Technical Section for Details	μV	Individual <5μV		Differential <5μV		Differential <10μV		Individual <5μV		Differential <5μV	
			<3μV		<3μV		<5μV		<3μV		<3μV	
			<1μV		<1μV		-		-		-	
			<0.5μV		<0.5μV		-		-		-	
COIL SPECS.												
Nom. Coil Voltage		VDC	5	12	5	12	5	12	5	12	5	12
Coil Resistance	+/- 10%, 25° C	Ω	350	2000	350	2000	200	850	200	1500	200	1500
Operate Voltage	Must Operate by	VDC - Max.	3.8	9.0	3.8	9.0	3.8	9.0	3.8	9.0	3.8	9.0
Release Voltage	Must Release by	VDC - Min.	0.4	1.0	0.4	1.0	0.4	1.0	0.4	1.0	0.4	1.0
CONTACT RATING												
Switching Voltage	Max DC/Peak AC Resist.	Volts	200		200		500		500		500	
Switching Current	Max DC/Peak AC Resist.	Amps	0.5		0.5		1.0		0.5		0.5	
Carry Current	Max DC/Peak AC Resist.	Amps	1.5		1.5		2.0		2.0		2.0	
Contact Rating	Max DC/Peak AC Resist.	Watts	10		10		28		10		10	
Life Expectancy-Typical ¹	Signal Level 1.0V, 10mA	x 10 ⁶ Ops.	500		100		1000		100		100	
Static Contact Resistance (max. init.)	50mV, 10mA	Ω	0.200		0.100		0.050		0.200		0.100	
Dynamic Contact Resistance (max. init.)	0.5V, 50mA at 100 Hz, 1.5 msec	Ω	0.300		0.200		0.100		0.300		0.200	
RELAY SPECIFICATIONS												
Insulation Resistance (minimum)	Between all Isolated Pins at 100V, 25°C, 40% RH	Ω	10 ¹²		10 ¹²		10 ¹²		10 ¹²		10 ¹²	
Capacitance - Typical Across Open Contacts	Without shield Shield Guarding	pF	3.0 1.9		1.7 0.2		1.7 0.2		3.0 1.9		1.7 0.2	
Dielectric Strength (minimum)	Between Contacts	VDC/peak AC	700		350		1000		1500		1500	
	Contacts to Shield	VDC/peak AC	1000		1000		1000		1000		1000	
	Contacts/Shield to Coil	VDC/peak AC	1500		1500		1500		1500		1500	
Operate Time - including bounce - Typical	At Nominal Coil Voltage, 30 Hz Square Wave	msec.	0.75		0.75		2.0		1.0		1.0	
Release Time - Typical	Zener-Diode Suppression ⁴	msec.	0.1		0.1		1.0		0.2		0.2	

Top View:
Dot stamped on top of relay refers to pin #1 location
Grid = .1"x.1" (2.54mm x 2.54mm)



Notes:

- ¹Consult factory for life expectancy at other switching loads.
- ²Models 3501 and 3540, optional electrostatic shield is tied to pin #5. Models 3502, 3520 and 3541, optional electrostatic shield is tied to pin #13.
- ³Model 3520 has Hg wet contacts - position sensitive, must be mounted within 30° of vertical plane. See schematic.
- ⁴Consists of 20V Zener-diode and 1N4002 diode in series, connected in parallel with coil

Environmental Ratings:

Storage Temp: -35°C to +100°C;
 Operating Temp: -20°C to +85°C
 Solder Temp: 270°C max; 10 sec. max
 The operate and release voltage and the coil resistance are specified at 25°C. These values vary by approximately 0.4%/°C as the ambient temperature varies.
 Vibration: 20 G's to 2000 Hz; Shock: 50 G's