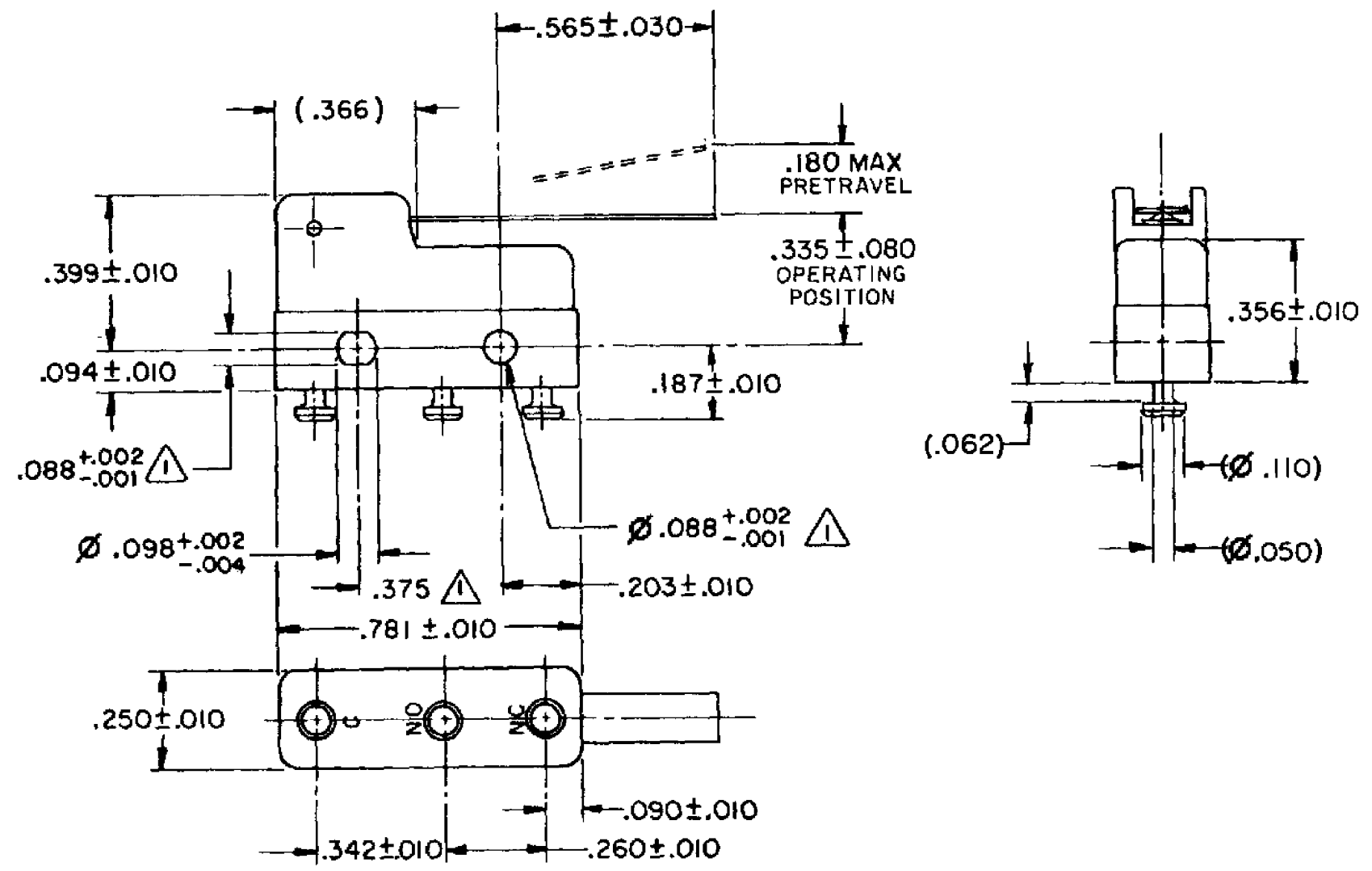
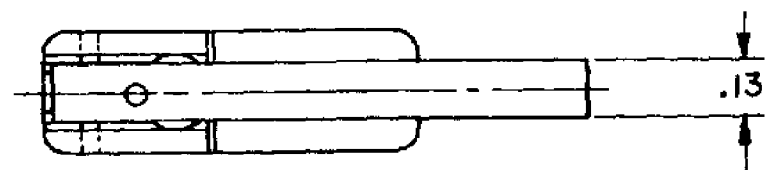


| |
|--------------------------|
| HONEYWELL PART NUMBER |
| 341SM2-T |
| PRODUCT CODE TZA2918 |

| REV | DOCUMENT | CHANGED BY | CHECK |
|-----|----------|------------|-------|
| 10 | 0041782 | PK 21JUL08 | ASD |



NOTE -
 ▲ MOUNTING HOLES WILL ACCEPT PINS OR SCREWS OF $\varnothing .087$ MAX ON $.375 \pm .002$ CENTERS
 2- SWITCH WILL WITHSTAND TEMPERATURE OF 250°F
 3 TERMINALS ARE PLATED FOR SOLDERING

| | |
|-------------|-----------|
| RELEASE NO. | PR - 8439 |
| REPLACES | - |

| CHARACTERISTICS |
|------------------------------------|
| OPERATING FORCE - - - 30 GRAM MAX |
| RELEASE FORCE - - - - 5 GRAM MIN |
| DIFFERENTIAL TRAVEL - - - .027 MAX |
| OVERTRAVEL - - - - - .026 MIN |

| ELECTRICAL DATA | |
|-----------------------------|--|
| CONTACT ARRANGEMENT SPDT | |
| APPROVALS | 11A 250V ~ T85 1E4 5A 30 Vdc T85 1E4 KEMA, CE |
| | 11A 1/4 HP 125 250 VAC 5A 30 VDC UL, CSA BRAND L190 |

| |
|--------------------------|
| DESIGN UNITS: INCH |
| TOLERANCES UNLESS NOTED: |
| NO PLACE X ± |
| ONE PLACE .X ± |
| TWO PLACE .XX ± |
| THREE PLACE .XXX ± |
| FOUR PLACE .XXXX ± |
| ANGLES ± |
| THIRD ANGLE PROJECTION |

| | | |
|--|----|-----------|
| DRAWN | VK | 03 DEC 07 |
| CHECK | RJ | 03 DEC 07 |
| THIS DRAWING COVERS A PROPRIETARY ITEM AND IS THE PROPERTY OF HONEYWELL. THIS DRAWING IS NOT TO BE COPIED OR USED WITHOUT THE PERMISSION OF HONEYWELL. | | |
| INTERPRET PER ANSI Y14.5M-1982 OTHER HONEYWELL ENGINEERING STANDARDS MAY APPLY | | |
| RASTER | | |

| | | | |
|-------------------------|----------|--------------------|--------------|
| Honeywell | | | |
| TITLE SWITCH - BASIC | | | |
| SIZE | TYPE | DRAWING NAME | REV |
| B | I | 341SM2-T | 10 |
| SCALE | - | WEIGHT .006 LB MAX | SHEET 1 OF 1 |