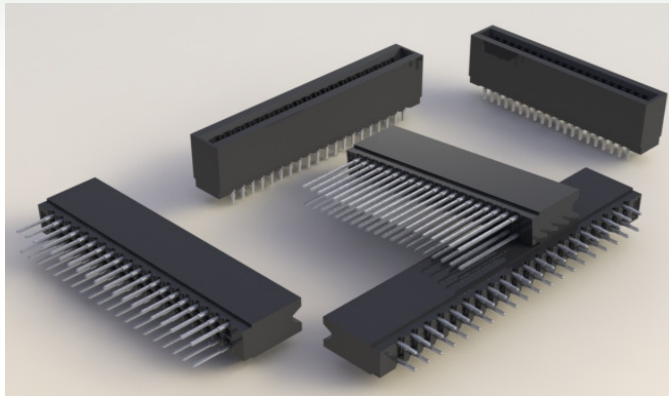




SERIES 725



Example Part Number: **725-100-520-206**



SPECIFICATIONS:

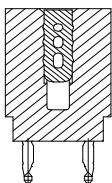
- Insulator Material: UL 94V-0 Thermoplastic Polyester
- Color: Black
- Contact Material: Copper, Nickel, Tin Alloy CA-725
- Contact Plating: 30µIN of Gold on the Mating Area, Tin Plating on Compliant Section and Contact Tails, Nickel underplate. Other Plating Options also available upon Request
- Current Rating: 2 Amperes Continuous
- Contact Resistance: 10 Milli Ohms Maximum
- Dielectric Withstanding Voltage: 1200 V AC RMS at Sea Level between Adjacent Contacts
- Insulation Resistance: 5000 MOhms Minimum
- Operating Temperature: -65°C to +125°C
- Daughter Board Insertion Force: 16 Oz (4.45N) Maximum per Contact Pair, when tested with a .054"(1.37) thick gauge
- Contact Insertion Into Hole: 20 Lbs (89N) Maximum
- Contact Retention Into Hole: 10 Lbs (44N) Minimum
- Reinsertability of Hole: 3 times Minimum

FEATURES:

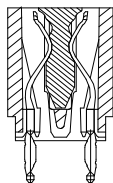
- CSA Approved and UL Recognized
- Contact Termination Options include P.C. Tail and .025"(0.64) Square Wire Wrap
- High Profile Insulator Body .645"(16.38) with End Notch Option
- Compliant Section for Gas Tight reliable connection in plated through holes eliminates soldering operation
- Accept between Contact and In-Contact Polarizing Keys (Special Features, if requested)

Polarizing Features:

BETWEEN CONTACT POLARIZING KEY
P/N 341-240-318



PROPOSED IN-CONTACT POLARIZING KEY
P/N 725-240-328



Series: 725

Total Number of Contacts

005, 006, 075
010, 012, 150

Contact Rows

Single Row
Double Row

Contact Code

Description

Tail Length "G"

Contact Code	Description	Tail Length "G"
520	P.C. TAIL REGULAR POINT	.175"(4.45)
522	P.C. TAIL REGULAR POINT	.375"(9.53)
525	P.C. TAIL HIGH POINT	.175"(4.45)
540	WIRE WRAP REGULAR POINT	.560"(14.22)
541	WIRE WRAP REGULAR POINT	.750"(19.05)
545	WIRE WRAP HIGH POINT	.560"(14.22)
560	MAKE BEFORE BREAK (MBB) CONTACT	

Contact Rows

Description

1	Single Row
2	Double Row

Insulator Options

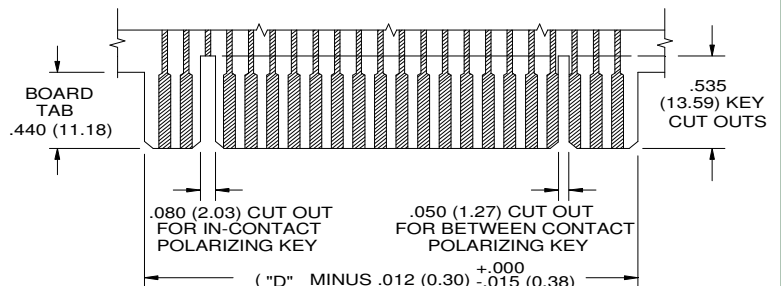
Description

01	.645"(16.38) Full Height Ends
06	.550"(13.97) Notched Ends

Ordering Notes:

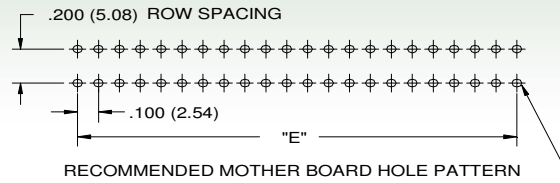
All connectors sizes up to 75 contacts in single row or 150 contacts in double row are available upon request.

Recommended Daughter Board:



EDAC

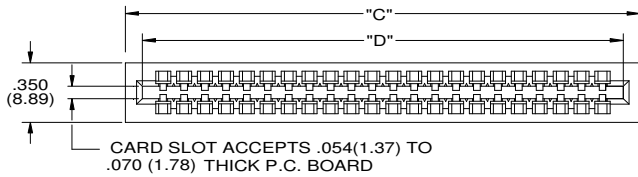
SERIES 725



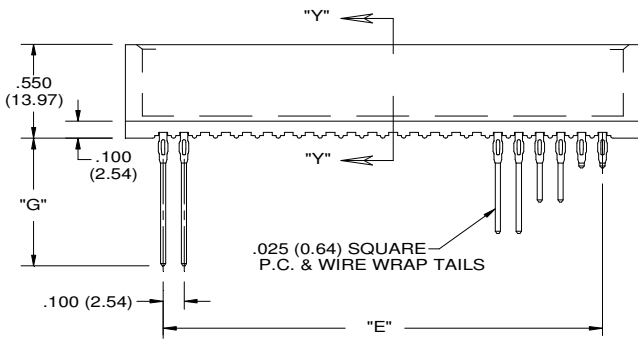
RECOMMENDED MOTHER BOARD HOLE PATTERN

.040 (1.02) DIA ± .003 (0.08)
SEE NOTE BELOW
Φ .008 (0.20) DIA

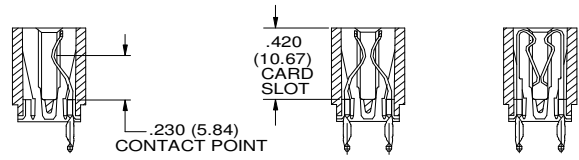
TO OBTAIN OPTIMUM COMPLIANT SECTION PERFORMANCE,
DRILL HOLES .0453 ± .001 (1.15 ± 0.03) DIAMETER
COPPER PLATE .001 (25.4 MICRONS) MINIMUM THICKNESS,
FOLLOWED BY TIN-LEAD PLATE TO PROVIDE FINISHED
HOLES .040 ± .003 (1.02 ± 0.08) DIAMETER



CARD SLOT ACCEPTS .054(1.37) TO .070 (1.78) THICK P.C. BOARD



.025 (0.64) SQUARE P.C. & WIRE WRAP TAILS

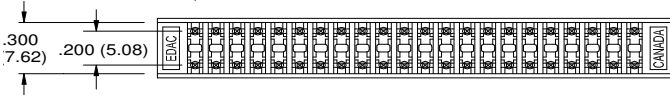


CODE 101

CODE 201

MAKE BEFORE BREAK (M.B.B.) POINT CONTACTS

Single Row Versions May Require Backup Springs Depending upon the Application.



41	82	4.360 (110.74)	4.200 (106.68)	4.000 (101.60)	40
40	80	4.260 (108.20)	4.100 (104.14)	3.900 (99.06)	39
39	78	4.160 (105.66)	4.000 (101.60)	3.800 (96.52)	38
38	76	4.060 (103.12)	3.900 (99.06)	3.700 (93.98)	37
37	74	3.960 (100.58)	3.800 (96.52)	3.600 (91.44)	36
36	72	3.860 (98.04)	3.700 (93.98)	3.500 (89.00)	35
35	70	3.760 (95.50)	3.600 (91.44)	3.400 (86.36)	34
34	68	3.660 (92.96)	3.500 (89.00)	3.300 (83.82)	33
33	66	3.560 (90.42)	3.400 (86.36)	3.200 (81.28)	32
32	64	3.460 (87.88)	3.300 (83.82)	3.100 (78.74)	31
31	62	3.360 (85.34)	3.200 (81.28)	3.000 (76.20)	30
30	60	3.260 (82.80)	3.100 (78.74)	2.900 (73.66)	29
29	56	3.160 (80.26)	3.000 (76.20)	2.800 (71.12)	28
28	56	3.060 (77.72)	2.900 (73.66)	2.700 (68.58)	27
27	54	2.960 (75.18)	2.800 (71.12)	2.600 (66.04)	26
26	52	2.860 (72.64)	2.700 (68.58)	2.500 (63.50)	25
25	50	2.760 (70.10)	2.600 (66.04)	2.400 (60.96)	24
24	48	2.660 (67.56)	2.500 (63.50)	2.300 (58.42)	23
23	46	2.560 (65.02)	2.400 (60.96)	2.200 (55.88)	22
22	44	2.460 (62.48)	2.300 (58.42)	2.100 (53.34)	21
21	42	2.360 (59.94)	2.200 (55.88)	2.000 (50.80)	20
20	40	2.260 (57.40)	2.100 (53.34)	1.900 (48.26)	19
19	38	2.160 (54.86)	2.000 (50.80)	1.800 (45.72)	18
18	36	2.060 (52.32)	1.900 (48.26)	1.700 (43.18)	17
17	34	1.960 (49.78)	1.800 (45.72)	1.600 (40.64)	16
16	32	1.860 (47.24)	1.700 (43.18)	1.500 (38.10)	15
15	30	1.760 (44.70)	1.600 (40.64)	1.400 (35.56)	14
14	28	1.660 (42.16)	1.500 (38.10)	1.300 (33.02)	13
13	26	1.560 (39.62)	1.400 (35.56)	1.200 (30.48)	12
12	24	1.460 (37.08)	1.300 (33.02)	1.100 (27.94)	11
11	22	1.360 (34.54)	1.200 (30.48)	1.000 (25.40)	10
10	20	1.260 (32.00)	1.100 (27.94)	.900 (22.86)	9
9	18	1.160 (29.46)	1.000 (25.40)	.800 (20.32)	8
8	16	1.060 (26.92)	.900 (22.86)	.700 (17.78)	7
7	14	.960 (24.38)	.800 (20.32)	.600 (15.24)	6
6	12	.860 (21.84)	.700 (17.78)	.500 (12.70)	5
5	10	.760 (19.30)	.600 (15.24)	.400 (10.16)	4
NO OF CONTACTS (SINGLE ROW)	NO OF CONTACTS (DUAL ROW)	Inch mm	Inch mm	Inch mm	NO OF SPACES
		C ±.015 (±0.38)	D ±.008 (±0.15)	E ±.005 (±0.13)	
					NO OF CONTACTS (SINGLE ROW)
					NO OF CONTACTS (DUAL ROW)
					Inch mm
					Inch mm
					Inch mm
					NO OF SPACES