

TopTherm fan-and-filter units



Air throughputs incl. outlet filter and protection categories Page 401 **Accessories for climate control** Page 454 **Therm software** Page 474

Energy-efficient version of the TopTherm fan-and-filter units with diagonal fan technology. Fans 3240.500 to 3245.510 may be controlled and monitored. The fan may be activated via the control interface with tachometer signal output integrated as standard, and monitoring of the fan speed and function is supported.

Colour:
– RAL 7035

Supply includes:

- Complete unit ready to install, including filter mat

Note:

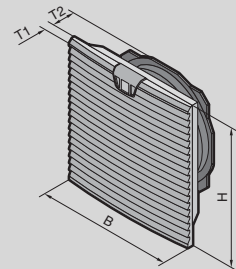
- For even more efficient operation or for monitoring the fan-and-filter units, we recommend the use of an EC speed control for EC fan-and-filter units

Approvals:

Available on the Internet

Performance diagrams:

Available on the Internet



Air throughput 55 – 230 m³/h, with EC technology

Model No.	Packs of	3238.500	3239.500	3240.500	3241.500	Page
Control interface		–	–	■	■	
Rated operating voltage V, ~, Hz		200 - 240, 1~, 50/60	200 - 240, 1~, 50/60	200 - 240, 1~, 50/60	200 - 240, 1~, 50/60	
Air throughput, unimpeded air flow m³/h		55	105	180	230	
Rated current A		0.05	0.05	0.12	0.17	
Pre-fuse A		6	6	6	6	
Power consumption W		6	6	11	16	
Width (B) mm		148.5	204	255	255	
Height (H) mm		148.5	204	255	255	
Depth (T1) mm		16	24	25	25	
Max. installation depth (T2) mm		58.5	90	107	107	
Required mounting cut-out (BxH) mm		124 x 124	177 x 177	224 x 224	224 x 224	
Fan		Diagonal, EC motor	Diagonal, EC motor	Diagonal, EC motor	Diagonal, EC motor	
Operating temperature range		-20°C...+55°C	-20°C...+55°C	-25°C...+55°C	-25°C...+55°C	
Storage temperature range		-30°C...+70°C	-30°C...+70°C	-25°C...+70°C	-25°C...+70°C	
Noise level dB(A)		49	53	47	52	
Weight kg		0.615	0.91	2.01	1.983	

Accessories

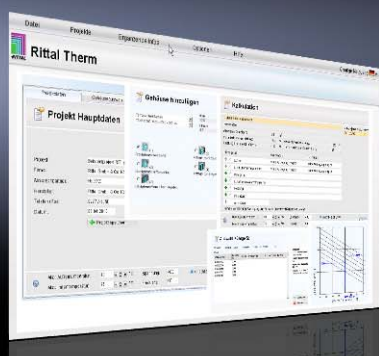
Outlet filter	1 pc(s).	3238.200	3239.200	3240.200	3240.200	457
Spare filter mats		see page	see page	see page	see page	456
Fine filter mats	5 pc(s).	3238.055	3181.100	3182.100	3182.100	457
Hose-proof hood	1 pc(s).	3238.080	3239.080	3240.080	3240.080	458
Blanking cover	2 pc(s).	3238.020	3239.020	3240.020	3240.020	459
EC speed control – Control unit for EC fan	1 pc(s).	–	–	3235.440	3235.440	469
EC speed control – Sensor for speed control	1 pc(s).	–	–	3235.450	3235.450	469
Thermostat	1 pc(s).	3110.000	3110.000	3110.000	3110.000	467
Thermostat with strain relief	1 pc(s).	3110.100	3110.100	3110.100	3110.100	467
Digital enclosure internal temperature display and thermostat	1 pc(s).	3114.200	3114.200	3114.200	3114.200	466

TopTherm fan-and-filter units

Air throughput 550 – 900 m³/h, with EC technology

Model No.	Packs of	3243.500	3244.500	3245.500	3245.510	Page
Control interface		■	■	■	■	
Rated operating voltage V, ~, Hz		200 - 240, 1~, 50/60	200 - 240, 1~, 50/60	200 - 240, 1~, 50/60	100 - 130, 1~, 50/60	
Air throughput, unimpeded air flow m³/h		550	700	900	900	
Rated current A		0.5	0.7	1.33	2.1	
Pre-fuse A		6	6	4	6	
Power consumption W		51	80	165	165	
Width (B) mm		323	323	323	323	
Height (H) mm		323	323	323	323	
Depth (T1) mm		25	25	25	25	
Max. installation depth (T2) mm		118.5	130.5	130.5	130.5	
Required mounting cut-out (BxH) mm		292 x 292	292 x 292	292 x 292	292 x 292	
Fan		Diagonal, EC motor	Diagonal, EC motor	Diagonal, EC motor	Diagonal, EC motor	
Operating temperature range		-25°C...+55°C	-25°C...+55°C	-25°C...+55°C	-25°C...+55°C	
Storage temperature range		-25°C...+70°C	-25°C...+70°C	-25°C...+70°C	-25°C...+70°C	
Noise level dB(A)		63	64	72	72	
Weight kg		2.92	2.7	3.46	3.76	
Accessories						
Outlet filter	1 pc(s).	3243.200	3243.200	3243.200	3243.200	457
Spare filter mats		see page	see page	see page	see page	456
Fine filter mats	5 pc(s).	3183.100	3183.100	3183.100	3183.100	457
Hose-proof hood	1 pc(s).	3243.080	3243.080	3245.080	3245.080	458
Blanking cover	2 pc(s).	3243.020	3243.020	3243.020	3243.020	459
EC speed control – Control unit for EC fan	1 pc(s).	3235.440	3235.440	3235.440	3235.440	469
EC speed control – Sensor for speed control	1 pc(s).	3235.450	3235.450	3235.450	3235.450	469
Thermostat	1 pc(s).	3110.000	3110.000	3110.000	3110.000	467
Thermostat with strain relief	1 pc(s).	3110.100	3110.100	3110.100	3110.100	467
Digital enclosure internal temperature display and thermostat	1 pc(s).	3114.200	3114.200	3114.200	3114.200	466

Accessories



Therm software

see page 474

TopTherm fan-and-filter units

Air throughput and protection category

TopTherm fan-and-filter units

Model No.	Air throughput m ³ /h at 50/60 Hz				Protection category IP to IEC 60 529/NEMA protection category			
	Unimpeded air flow	With outlet filter including filter mat			Standard filter	Standard filter and additional micro-filter mat	Standard filter and hose-proof hood	
3237.100	20/25	1 x 3237.200 15/18	-	-	IP 54/ Type 12	-	IP 56/ Type 3, 3R	
3237.110								
3237.124	20							
3238.100	55/66	1 x 3238.200 43/50	2 x 3238.200 46/56	-		IP 54/ Type 12	IP 55/ Type 12	IP 56/ Type 3, 3R Type 4, 4X
3238.110								
3238.124	55	1 x 3238.200 43	2 x 3238.200 46					
3239.100	105/120	1 x 3239.200 87/100	2 x 3239.200 93/108	1 x 3240.200 98/111				
3239.110								
3239.124	105	1 x 3239.200 87	2 x 3239.200 93	1 x 3240.200 98				
3240.100	180/160	1 x 3240.200 138/121	2 x 3240.200 165/140	1 x 3243.200 165/140				
3240.110								
3240.124	180	1 x 3240.200 138	2 x 3240.200 165	1 x 3243.200 165				
3241.100	230/250	1 x 3240.200 183/205	2 x 3240.200 203/230	1 x 3243.200 203/230				
3241.110								
3241.124	230	1 x 3240.200 183	2 x 3240.200 203	1 x 3243.200 203				
3243.100	550/600	1 x 3243.200 465/510	2 x 3243.200 508/548	-				
3243.110								
3244.100	700/770	1 x 3243.200 544/587	2 x 3243.200 614/662	-				
3244.110								
3244.140								

TopTherm fan-and-filter units, EMC

Model No.	Air throughput m ³ /h at 50/60 Hz				Protection category IP to IEC 60 529/NEMA protection category			
	Unimpeded air flow	With EMC outlet filter including EMC filter mat			Standard filter	Standard filter and additional micro-filter mat	Standard filter and hose-proof hood	
3237.600	20/25	1 x 3237.060 15/18	-	-	IP 54/ Type 12	-	IP 56/ Type 3, 3R	
3238.600	55/66	1 x 3238.060 43/50	2 x 3238.060 46/56	-				
3239.600	105/120	1 x 3239.060 87/100	2 x 3239.060 93/108	1 x 3240.060 98/111				
3240.600	180/160	1 x 3240.060 138/121	2 x 3240.060 165/140	1 x 3243.060 165/140				
3241.600	230/250	1 x 3240.060 183/205	2 x 3240.060 203/230	1 x 3243.060 203/230				
3243.600	550/600	1 x 3243.060 465/510	2 x 3243.060 508/548	-				
3244.600	700/770	1 x 3243.060 544/587	2 x 3243.060 630/690	-				
3245.600	900	1 x 3243.060 680	2 x 3243.060 820	-		IP 51	IP 52	IP 56/ Type 1, 12 Type 3, 3R

TopTherm fan-and-filter units with EC technology

Model No.	Air throughput m ³ /h at 50/60 Hz				Protection category IP to IEC 60 529/NEMA protection category		
	Unimpeded air flow	With outlet filter including filter mat			Standard filter	Standard filter and additional micro-filter mat	Standard filter and hose-proof hood
3238.500	55	1 x 3238.200 43	2 x 3238.200 46	-	IP 54/ Type 12	IP 55/ Type 12	IP 56/ Type 3, 3R Type 4, 4X
3239.500	105	1 x 3239.200 87	2 x 3239.200 93	1 x 3240.200 98			
3240.500	180	1 x 3240.200 138	2 x 3240.200 165	1 x 3243.200 165			
3241.500	230	1 x 3240.200 183	2 x 3240.200 203	1 x 3243.200 203			
3243.500	550	1 x 3243.200 465	2 x 3243.200 508	-			
3244.500	700	1 x 3243.200 544	2 x 3243.200 630	-			
3245.500	900	1 x 3243.200 680	2 x 3243.200 820	-	IP 51	IP 52	IP 56/ Type 1, 12 Type 3, 3R
3245.510	900	1 x 3243.200 680	2 x 3243.200 820	-			