

Terminal blocks

to Type 030

- Type 009** page 95
- Type 026** page 127
- Type 049** page 95

to Type 330

- ASP045** page 52
- Type 313** page 98
- Type 314** page 98
- Type 349** page 96
- Type 350** page 96

Accessories

for Type 330
Coding set
700024 page 180

Type 030

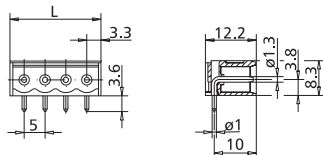
Header, centerline 5 mm / 0.197 inches, horizontal mounting, round contact pins 1.3 mm / 0.051 inches, closed ends

Technical Data

	V / A	300 / 15
	V / A	300 / 15
		250 V / 4 kV / 10 A

Insulation co-ordination according to IEC 664-1			
Clearance and creepage distances	min. 3.7 mm		
Insulating material class	CTI 600		
Overvoltage category	III	III	II
Pollution degree	3	2	2
Rated voltage	250	630	630
Rated test voltage	2.5	6	4
Protection category according to IEC 529	IP00		
Solder pin dimension	1 mm		
Recommended pc board hole dia.	Ø 1.3 mm		
Solder pin length	5.2 mm		
Pole size	2 - 22		
Color	black		

Dimensions in mm 1 mm = 0.0394 in.



$L = (\text{pole size} - 1) \times \text{centerline} + 6.6 \text{ mm} / 0.260 \text{ inches}$

Type 330

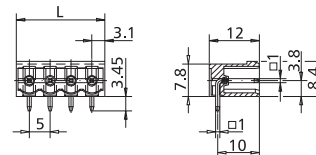
Header, centerline 5 mm / 0.197 inches, horizontal mounting, square contact pins 1 mm / 0.039 inches, closed ends, codable

Technical Data

	V / A	300 / 15
		320 V / 4 kV / 10 A

Insulation co-ordination according to IEC 664-1			
Clearance and creepage distances	min. 4 mm		
Insulating material class	CTI 600		
Overvoltage category	III	III	II
Pollution degree	3	2	2
Rated voltage	320	800	800
Rated test voltage	4	6	4
Protection category according to IEC 529	IP00		
Solder pin dimension	1.0 x 1.0 mm		
Recommended pc board hole dia.	Ø 1.5 mm		
Solder pin length	3.45 mm		
Pole size	2 - 24		
Color	black		

Dimensions in mm 1 mm = 0.0394 in.



$L = (\text{pole size} - 1) \times \text{centerline} + 6.2 \text{ mm} / 0.244 \text{ inches}$

Part numbers (P/N)

(informations: page 111)

Type 030

centerline 5 mm / 0.197 inches

P/N 310301

	02	03	04	05	06	07	08
	09	10	11	12	13	14	15
	17	18	19	20	21	22	

Type 030

centerline 10 mm / 0.394 inches

P/N 310302

	02	03	04	05	06	07	08
	09	10	11				

- Standard pole sizes
- Available on demand. Minimum order quantity 5000 pieces per item.

Part numbers (P/N)

(informations: page 111)

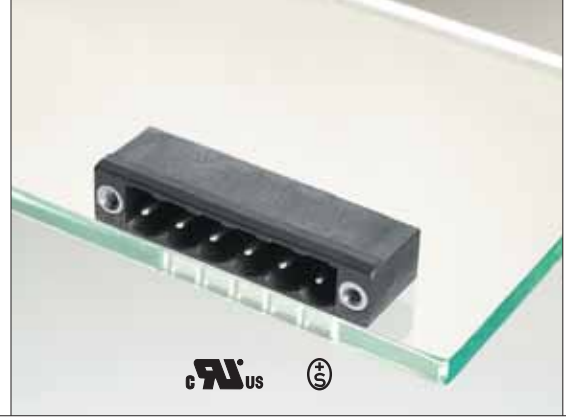
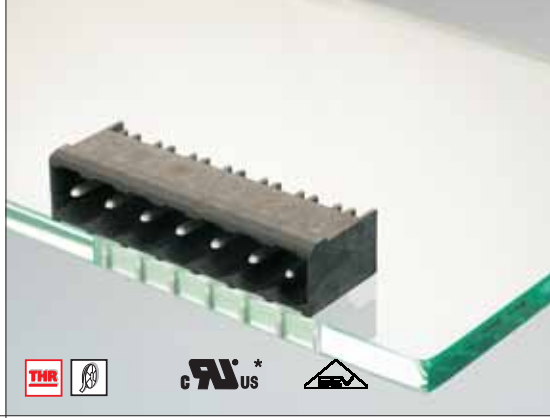
Type 330

centerline 5 mm / 0.197 inches

P/N 313301

	02	03	04	05	06	07	08
	09	10	11	12	13	14	15
	17	18	19	20	21	22	23
							24

- Standard pole sizes
- Available on demand. Minimum order quantity 5000 pieces per item.



Terminal blocks

to Type 176

- ASP045** page 52
- Type 313** page 98
- Type 314** page 98
- Type 349** page 96
- Type 350** page 96

to Type 336

- ASP129** page 54
- Type 351** page 97

Accessories

for **Type 176** and **Type 336**
Coding set
 700024 page 180

Note for Type 176

Packaging for automated processing is available on demand.
 Please do not hesitate to contact us.

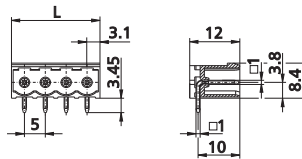
Type 176

Header, centerline 5 mm / 0.197 inches, horizontal mounting, designed for THR, optional Tape on Reel packaging for automated processing, square contact pins 1 mm / 0.039 inches, codable

Technical Data

	250 V / 4 kV / 10 A
Insulation co-ordination according to IEC 664-1	
Clearance and creepage distances	min. 4 mm
Insulating material class	CTI 600
Overvoltage category	III III II
Pollution degree	3 2 2
Rated voltage	320 800 800
Rated test voltage	4 6 4
Protection category according to IEC 529	IP00
Solder pin dimension	1.0 x 1.0 mm
Recommended pc board hole dia.	Ø 1.5 mm
Solder pin length	3.45 mm
Pole size	2 - 12
Color	black

Dimensions in mm 1 mm = 0.0394 in.



$L = (\text{pole size} - 1) \times \text{centerline} + 6.2 \text{ mm} / 0.244 \text{ inches}$

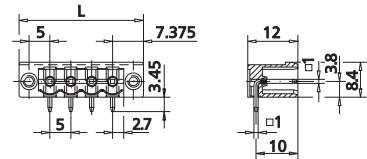
Type 336

Header, centerline 5 mm / 0.197 inches, horizontal mounting, square contact pins 1 mm / 0.039 inches, mounting flange, codable

Technical Data

	300 / 15
	400 V / 4 kV / 10 A
Insulation co-ordination according to IEC 664-1	
Clearance and creepage distances	min. 4 mm
Insulating material class	CTI 600
Overvoltage category	III III II
Pollution degree	3 2 2
Rated voltage	320 800 800
Rated test voltage	4 6 4
Protection category according to IEC 529	IP00
Solder pin dimension	1.0 x 1.0 mm
Recommended pc board hole dia.	Ø 1.5 mm
Solder pin length	3.45 mm
Pole size	2 - 24
Color	black

Dimensions in mm 1 mm = 0.0394 in.



$L = (\text{pole size} - 1) \times \text{centerline} + 14.75 \text{ mm} / 0.581 \text{ inches}$

Part numbers (P/N)

(informations: page 111)

Type 176

centerline 5 mm / 0.197 inches

P/N 311761

	02	03	04	05	06	07	08
	09	10	11	12			

* approval pending

- Standard pole sizes
- Available on demand. Minimum order quantity 5000 pieces per item.

Part numbers (P/N)

(informations: page 111)

Type 336

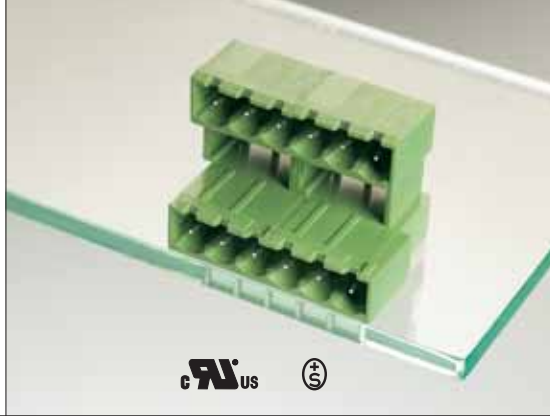
centerline 5 mm / 0.197 inches

P/N 313361

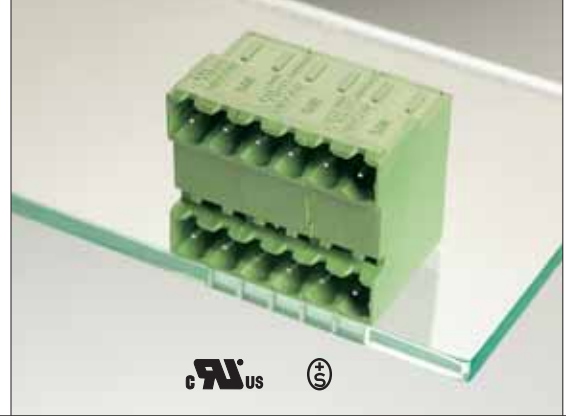
	02	03	04	05	06	07	08
	09	10	11	12	13	14	15
	17	18	19	20	21	22	23
							24

for **ASP129**
 P/N 31336204-000190

- Standard pole sizes
- Available on demand. Minimum order quantity 5000 pieces per item.



RIUS (S)



RIUS (S)

Terminal blocks

to **Type 276** and **Type 280**

ASP045 page 52

Type 314 page 98

Type 349 page 96

Type 350 page 96

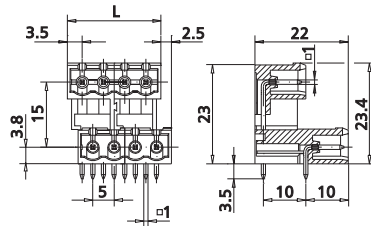
Type 276

Header, centerline 5 mm / 0.197 inches, horizontal mounting, square contact pins 1 mm / 0.039 inches, closed ends, staggered pins

Technical Data

	V / A	300 / 15		
(S)		300 V / 4 kV / 12 A		
Insulation co-ordination according to IEC 664-1				
Clearance and creepage distances	min. 4 mm			
Insulating material class	CTI 600			
Overvoltage category	III	III	II	
Pollution degree	3	2	2	
Rated voltage	320	800	800	
Rated test voltage	4	6	4	
Protection category according to IEC 529				
	IP00			
Solder pin dimension	1.0 x 1.0 mm			
Recommended pc board hole dia.	Ø 1.5 mm			
Solder pin length	3.5 mm			
Pole size	4 - 48			
Color	green			

Dimensions in mm 1 mm = 0.0394 in.



L = (pole size - 1) x centerline + 7 mm / 0.276 inches

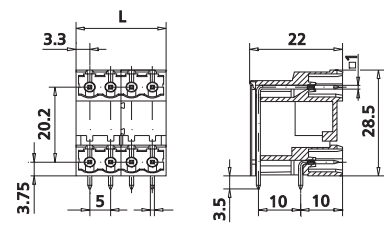
Type 280

Header, centerline 5 mm / 0.197 inches, horizontal mounting, square contact pins 1 mm / 0.039 inches, closed ends

Technical Data

	V / A	300 / 15		
(S)		300 V / 4 kV / 12 A		
Insulation co-ordination according to IEC 664-1				
Clearance and creepage distances	min. 4 mm			
Insulating material class	CTI 600			
Overvoltage category	III	III	II	
Pollution degree	3	2	2	
Rated voltage	320	800	800	
Rated test voltage	4	6	4	
Protection category according to IEC 529				
	IP00			
Solder pin dimension	1.0 x 1.0 mm			
Recommended pc board hole dia.	Ø 1.5 mm			
Solder pin length	3.5 mm			
Pole size	4 - 48			
Color	green			

Dimensions in mm 1 mm = 0.0394 in.



L = (pole size - 1) x centerline + 6.6 mm / 0.260 inches

Part numbers (P/N)

(informations: page 111)

Type 276

centerline 5 mm / 0.197 inches

P/N 312761

Complete the part number by adding the pole size.

	04	06	08	10	12	14	16
18	20	22	24	26	28	30	32
34	36	38	40	42	44	46	48

Part numbers (P/N)

(informations: page 111)

Type 280

centerline 5 mm / 0.197 inches

P/N 312801

Complete the part number by adding the pole size.

	04	06	08	10	12	14	16
18	20	22	24	26	28	30	32
34	36	38	40	42	44	46	48

Standard pole sizes
 Available on demand. Minimum order quantity 5000 pieces per item.

Standard pole sizes
 Available on demand. Minimum order quantity 5000 pieces per item.