

Note for wire range

Additional wire sizes and/or combinations of same size wires as follows:

Type 01 and Type 55

- #(1) Wire range extended to No. 30 AWG for factory-wiring
- ++ Two same size wires No. 22 - 18 AWG Cu Sol/Str for field-wiring; 30 - 18 AWG Cu Sol/Str factory-wiring

Type 001

Screw type terminal block, solderable, centerline 5 mm / 0.197 inches, horizontal wire entry, wire protector

Technical Data

	V / A / AWG	300 / 15 / 22 - 14
	V / A / AWG	300 / 15 / 22 - 14
	0.33 - 1.5 mm ²	125 V / 2.5 kV / 13 A

Insulation co-ordination according to IEC 664-1			
Clearance and creepage distances	min. 2.6 mm		
Insulating material class	CTI 600		
Overvoltage category	III	III	II
Pollution degree	3	2	2
Rated voltage	200	500	500
Rated test voltage	2.5	4	2.5
Protection category according to IEC 529			
	IP00		
Tightening torque UL	7 lb-in max.		
Min. insul. strip length	6 mm		
Solder pin dimension	0.9 mm		
Recommended pc board hole dia.	Ø 1.3 mm		
Solder pin length	3.8 mm		
Pole size	2 - 22		
Color	grey		

Dimensions in mm 1 mm = 0.0394 in.

Type 055

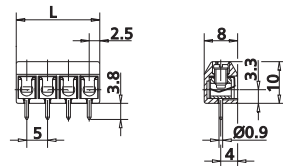
Screw type terminal block, solderable, centerline 5 mm / 0.197 inches, horizontal wire entry, wire protector, modular

Technical Data

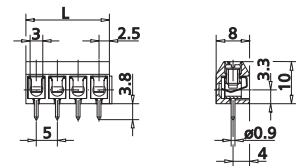
	V / A / AWG	300 / 15 / 22 - 14
	V / A / AWG	300 / 15 / 22 - 14
	0.33 - 1.5 mm ²	125 V / 2.5 kV / 13 A

Insulation co-ordination according to IEC 664-1			
Clearance and creepage distances	min. 2.6 mm		
Insulating material class	CTI 600		
Overvoltage category	III	III	II
Pollution degree	3	2	2
Rated voltage	200	500	500
Rated test voltage	2.5	4	2.5
Protection category according to IEC 529			
	IP00		
Tightening torque UL	7 lb-in max.		
Min. insul. strip length	6 mm		
Solder pin dimension	0.9 mm		
Recommended pc board hole dia.	Ø 1.3 mm		
Solder pin length	3.8 mm		
Pole size	2 - 4		
Color	grey		

Dimensions in mm 1 mm = 0.0394 in.



L = (pole size - 1) x centerline + 5 mm / 0.197 inches



L = (pole size - 1) x centerline + 5 mm / 0.197 inches

Part numbers (P/N)

(informations: page 60)

Complete the part number by adding the pole size.

Type 001

centerline 5 mm / 0.197 inches

P/N 310011

	02	03	04	05	06	07	08
09	10	11	12	13	14	15	16
17	18	19	20	21	22		

Type 001

centerline 10 mm / 0.394 inches

P/N 310012

	02	03	04	05	06	07	08
09	10	11					

Standard pole sizes

Available on demand. Minimum order quantity 5000 pieces per item.

Part numbers (P/N)

(informations: page 60)

Complete the part number by adding the pole size.

Type 055

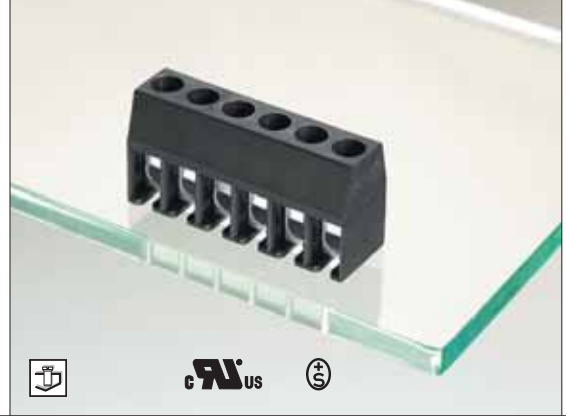
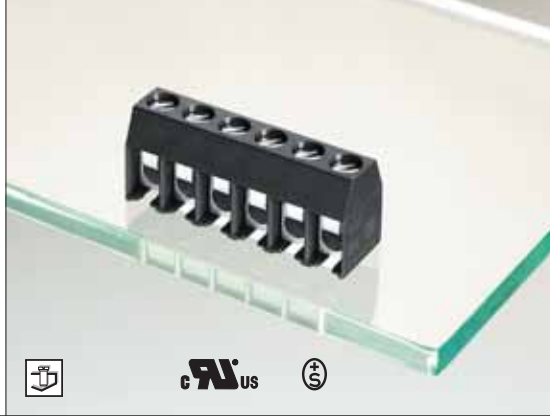
centerline 5 mm / 0.197 inches

P/N 310551

	02	03	04				

Standard pole sizes

Available on demand. Minimum order quantity 5000 pieces per item.



Note for wire range

Additional wire sizes and/or combinations of same size wires as follows:

Type 03

- #(1) Wire range extended to No. 30 AWG for factory-wiring
- + Two same size wires No. 22 - 16 AWG Cu Sol/Str for field-wiring; 30 - 16 AWG Cu Sol/Str factory-wiring

Type 271

Screw type terminal block, solderable, centerline 5 mm / 0.197 inches, horizontal wire entry, wire protector

Technical Data

• RIA^{US} V / A / AWG 300 / 15 / 26 - 14

Ⓢ 0.12 - 2.5 mm² 250 V / 4 kV / 15 A

Insulation co-ordination according to IEC 664-1

Clearance and creepage distances min. 3.3 mm

Insulating material class CTI 600

Overvoltage category III III II

Pollution degree 3 2 2

Rated voltage 250 630 630

Rated test voltage 2.5 6 4

Protection category according to IEC 529 IP20

Tightening torque UL 7 lb-in max.

Min. insul. strip length 8 mm

Solder pin dimension 1 mm

Recommended pc board hole dia. Ø 1.3 mm

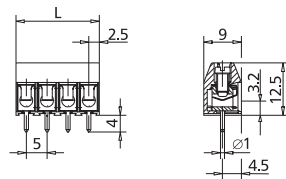
Solder pin length 4 mm

Pole size 2 - 24

Color black

Dimensions in mm

1 mm = 0.0394 in.



$L = (\text{pole size} - 1) \times \text{centerline} + 5 \text{ mm} / 0.197 \text{ inches}$

Type 003

Screw type terminal block, solderable, centerline 5 mm / 0.197 inches, horizontal wire entry, wire protector

Technical Data

• RIA^{US} V / A / AWG 300 / 20 / 22 - 12

Ⓢ 0.33 - 2.5 mm² 250 V / 4 kV / 16 A

Insulation co-ordination according to IEC 664-1

Clearance and creepage distances min. 3.9 mm

Insulating material class CTI 600

Overvoltage category III III II

Pollution degree 3 2 2

Rated voltage 250 630 630

Rated test voltage 2.5 6 4

Protection category according to IEC 529 IP20

Tightening torque UL 7 lb-in max.

Min. insul. strip length 8 mm

Solder pin dimension 1 mm

Recommended pc board hole dia. Ø 1.3 mm

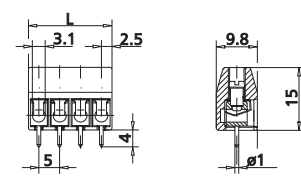
Solder pin length 4 mm

Pole size 2 - 24

Color black

Dimensions in mm

1 mm = 0.0394 in.



$L = (\text{pole size} - 1) \times \text{centerline} + 5 \text{ mm} / 0.197 \text{ inches}$

Part numbers (P/N)

(informations: page 60)

Type 271

centerline 5 mm / 0.197 inches

P/N 312711

	02	03	04	05	06	07	08
	09	10	11	12	13	14	15
	17	18	19	20	21	22	23
	24						

Type 271

centerline 10 mm / 0.394 inches

P/N 312712

	02	03	04	05	06	07	08
	09	10	11	12			

Standard pole sizes

Available on demand. Minimum order quantity 5000 pieces per item.

Part numbers (P/N)

(informations: page 60)

Type 003

centerline 5 mm / 0.197 inches

P/N 310031

	02	03	04	05	06	07	08
	09	10	11	12	13	14	15
	17	18	19	20	21	22	23
	24						

Type 003

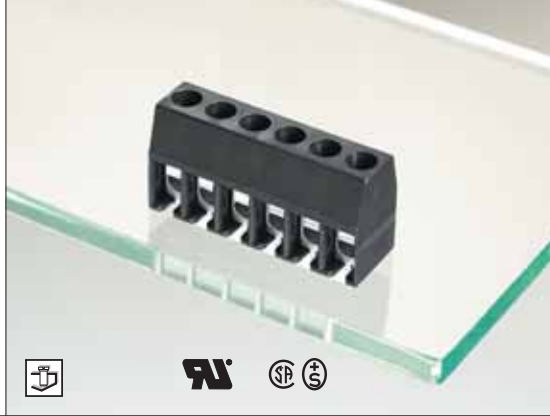
centerline 10 mm / 0.394 inches

P/N 310032

	02	03	04	05	06	07	08
	09	10	11	12			

Standard pole sizes

Available on demand. Minimum order quantity 5000 pieces per item.



Note for wire range

Additional wire sizes and/or combinations of same size wires as follows:

Type 69

- #### 2 No. 22 - 18 AWG (field-wiring);
- 2 No. 26 - 18 AWG or 1 No. 26 - 14 AWG (factory-wiring)

Type 11

- #(1) Wire range extended to No. 30 AWG for factory-wiring

Type 069

Screw type terminal block, solderable, centerline 5 mm / 0.197 inches, horizontal wire entry, wire protector

Technical Data

	V / A / AWG	300 / 20 / 22 - 12
	V / A / AWG	300 / 20 / 22 - 12
	0.33 - 1.5 mm ²	250 V / 4 kV / 15 A

Insulation co-ordination according to IEC 664-1

Clearance and creepage distances	min. 3.9 mm		
Insulating material class	CTI 600		
Overvoltage category	III	III	II
Pollution degree	3	2	2
Rated voltage	250	630	630
Rated test voltage	2.5	6	4
Protection category according to IEC 529	IP20		
Tightening torque UL	6 lb-in max.		
Min. insul. strip length	8 mm		
Solder pin dimension	2 x 0.9 x 0.9 mm		
Recommended pc board hole dia.	Ø 1.4 mm		
Solder pin length	3.5 mm		
Pole size	2 - 24		
Color	black		

Dimensions in mm 1 mm = 0.0394 in.

Type 011

Screw type terminal block, solderable, centerline 5 mm / 0.197 inches, horizontal wire entry, lift system

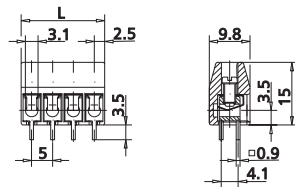
Technical Data

	V / A / AWG	300 / 15 / 28 - 12
	V / A / AWG	300 / 15 / 22 - 14
	0.08 - 1.5 mm ²	125 V / 4 kV / 13 A

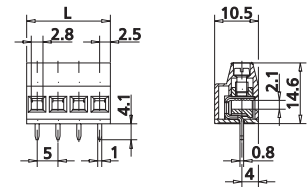
Insulation co-ordination according to IEC 664-1

Clearance and creepage distances	min. 3.9 mm		
Insulating material class	CTI 600		
Overvoltage category	III	III	II
Pollution degree	3	2	2
Rated voltage	250	630	630
Rated test voltage	2.5	6	4
Protection category according to IEC 529	IP20		
Tightening torque UL	8 lb-in max.		
Min. insul. strip length	7 mm		
Solder pin dimension	0.8 x 1.0 mm		
Recommended pc board hole dia.	Ø 1.4 mm		
Solder pin length	4.1 mm		
Pole size	2 - 16		
Color	black		

Dimensions in mm 1 mm = 0.0394 in.



$L = (\text{pole size} - 1) \times \text{centerline} + 5 \text{ mm} / 0.197 \text{ inches}$



$L = (\text{pole size} - 1) \times \text{centerline} + 5 \text{ mm} / 0.197 \text{ inches}$

Part numbers (P/N)

(informations: page 60)

Type 69

centerline 5 mm / 0.197 inches

P/N 310691

Complete the part number by adding the pole size.

	02	03	04	05	06	07	08
	09	10	11	12	13	14	15
	17	18	19	20	21	22	23
	24						

Type 69

centerline 10 mm / 0.394 inches

P/N 310692

	02	03	04	05	06	07	08
	09	10	11	12			

Standard pole sizes

Available on demand. Minimum order quantity 5000 pieces per item.

Part numbers (P/N)

(informations: page 60)

Type 011

centerline 5 mm / 0.197 inches

P/N 310111

Complete the part number by adding the pole size.

	02	03	04	05	06	07	08
	09	10	11	12	13	14	15

Type 011

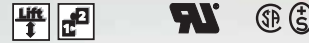
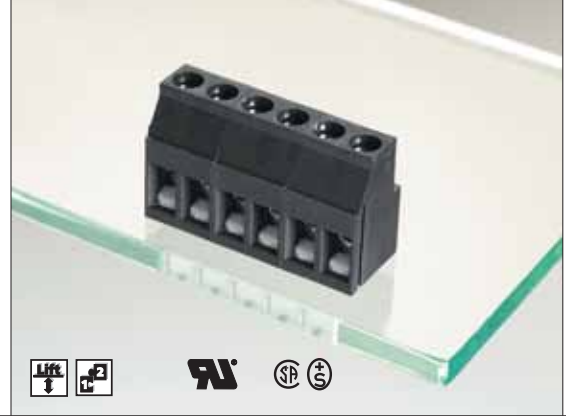
centerline 10 mm / 0.394 inches

P/N 310112

	02	03	04	05	06	07	08

Standard pole sizes

Available on demand. Minimum order quantity 5000 pieces per item.



Note for wire range

Additional wire sizes and/or combinations of same size wires as follows:

Type 71 and Type 72

- ## 2 No. 22 - 16 AWG (field-wiring);
- 2 No. 30 - 16 AWG or
- 1 No. 30 - 12 AWG (factory-wiring)

Type 071

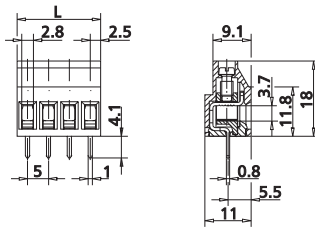
Screw type terminal block, solderable, centerline 5 mm / 0.197 inches, horizontal wire entry, lift system

Technical Data

	V / A / AWG	300 / 20 / 22 - 12
	V / A / AWG	300 / 20 / 22 - 12
	0.33 - 2.5 mm ²	250 V / 4 kV / 16 A

Insulation co-ordination according to IEC 664-1			
Clearance and creepage distances	min. 4 mm		
Insulating material class	CTI 600		
Overvoltage category	III	III	II
Pollution degree	3	2	2
Rated voltage	320	800	800
Rated test voltage	4	6	4
Protection category according to IEC 529			
	IP20		
Tightening torque UL	6 lb-in max.		
Min. insul. strip length	8 mm		
Solder pin dimension	0.8 x 1.0 mm		
Recommended pc board hole dia.	Ø 1.4 mm		
Solder pin length	4.1 mm		
Pole size	2 - 24		
Color	black		

Dimensions in mm 1 mm = 0.0394 in.



$L = (\text{pole size} - 1) \times \text{centerline} + 5 \text{ mm} / 0.197 \text{ inches}$

Type 072

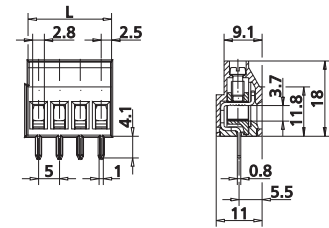
Screw type terminal block, solderable, centerline 5 mm / 0.197 inches, horizontal wire entry, lift system, modular

Technical Data

	V / A / AWG	300 / 20 / 22 - 12
	V / A / AWG	300 / 20 / 22 - 12
	0.33 - 2.5 mm ²	250 V / 4 kV / 16 A

Insulation co-ordination according to IEC 664-1			
Clearance and creepage distances	min. 4 mm		
Insulating material class	CTI 600		
Overvoltage category	III	III	II
Pollution degree	3	2	2
Rated voltage	320	800	800
Rated test voltage	4	6	4
Protection category according to IEC 529			
	IP20		
Tightening torque UL	6 lb-in max.		
Min. insul. strip length	8 mm		
Solder pin dimension	0.8 x 1.0 mm		
Recommended pc board hole dia.	Ø 1.4 mm		
Solder pin length	4.1 mm		
Pole size	2 - 4		
Color	black		

Dimensions in mm 1 mm = 0.0394 in.



$L = (\text{pole size} - 1) \times \text{centerline} + 5 \text{ mm} / 0.197 \text{ inches}$

Part numbers (P/N)

(informations: page 60)

Complete the part number by adding the pole size.

Type 071

centerline 5 mm / 0.197 inches

P/N 310711

	02	03	04	05	06	07	08
	09	10	11	12	13	14	15
	17	18	19	20	21	22	23
	24						

Type 071

centerline 10 mm / 0.394 inches

P/N 310712

	02	03	04	05	06	07	08
	09	10	11	12			

Standard pole sizes

Available on demand. Minimum order quantity 5000 pieces per item.

Part numbers (P/N)

(informations: page 60)

Complete the part number by adding the pole size.

Type 072

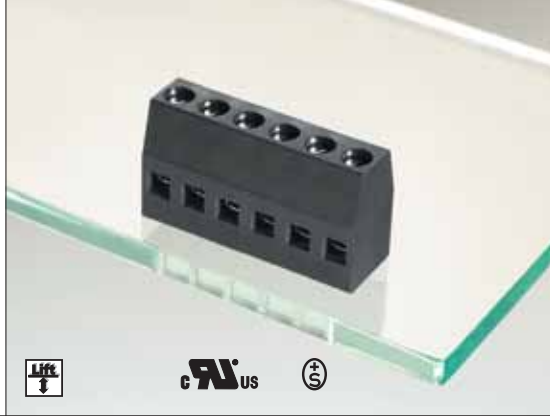
centerline 5 mm / 0.197 inches

P/N 310721

	02	03	04				

Standard pole sizes

Available on demand. Minimum order quantity 5000 pieces per item.



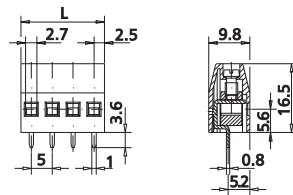
Type 204

Screw type terminal block, solderable, centerline 5 mm / 0.197 inches, horizontal wire entry, lift system

Technical Data

US V / A / AWG	300 / 15 / 28 - 12		
0.08 - 2.5 mm ²	250 V / 4 kV / 16 A		
Insulation co-ordination according to IEC 664-1	Clearance and creepage distances min. 4 mm		
Insulating material class	CTI 600		
Overvoltage category	III	III	II
Pollution degree	3	2	2
Rated voltage	320	800	800
Rated test voltage	4	6	4
Protection category according to IEC 529	IP20		
Tightening torque UL	6 lb-in max.		
Min. insul. strip length	8 mm		
Solder pin dimension	0.8 x 1.0 mm		
Recommended pc board hole dia.	Ø 1.4 mm		
Solder pin length	3.6 mm		
Pole size	2 - 12		
Color	black		

Dimensions in mm 1 mm = 0.0394 in.



L = (pole size - 1) x centerline + 5 mm / 0.197 inches

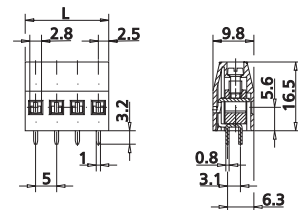
Type 269

Screw type terminal block, solderable, centerline 5 mm / 0.197 inches, horizontal wire entry, lift system, double solder pins

Technical Data

US V / A / AWG	300 / 15 / 28 - 12		
0.08 - 2.5 mm ²	250 V / 4 kV / 15 A		
Insulation co-ordination according to IEC 664-1	Clearance and creepage distances min. 4 mm		
Insulating material class	CTI 600		
Overvoltage category	III	III	II
Pollution degree	3	2	2
Rated voltage	320	800	800
Rated test voltage	4	6	4
Protection category according to IEC 529	IP20		
Tightening torque UL	6 lb-in max.		
Min. insul. strip length	8 mm		
Solder pin dimension	0.8 x 1.0 mm		
Recommended pc board hole dia.	Ø 1.4 mm		
Solder pin length	3.2 mm		
Pole size	2 - 24		
Color	black		

Dimensions in mm 1 mm = 0.0394 in.



L = (pole size - 1) x centerline + 5 mm / 0.197 inches

Part numbers (P/N)

(informations: page 60)

Type 204

centerline 5 mm / 0.197 inches

P/N 312041

Complete the part number by adding the pole size.

	02	03	04	05	06	07	08
09	10	11	12				

- Standard pole sizes
- Available on demand. Minimum order quantity 5000 pieces per item.

Part numbers (P/N)

(informations: page 60)

Type 269

centerline 5 mm / 0.197 inches

P/N 312691

Complete the part number by adding the pole size.

	02	03	04	05	06	07	08
09	10	11	12	13	14	15	16
17	18	19	20	21	22	23	24

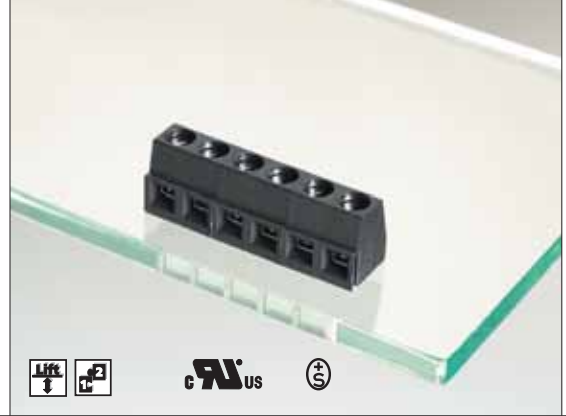
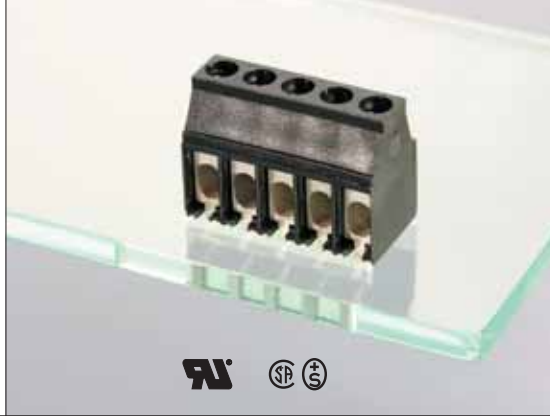
Type 269

centerline 10 mm / 0.394 inches

P/N 312692

	02	03	04	05	06	07	08
09	10	11	12				

- Standard pole sizes
- Available on demand. Minimum order quantity 5000 pieces per item.



Type 094 is modular to Type 092

Type 170

Screw type terminal block, solderable, centreline 5 mm / 0.197 inches, horizontal wire entry

Technical Data

RIA V / A / AWG 300 / 20 / 20 - 10

SP V / A / AWG 300 / 20 / 20 - 10

CE 0.52 - 2.5 mm² 250 V / 4 kV / 16 A

Insulation co-ordination according to IEC 664-1

Clearance and creepage distances min. 3.5 mm

Insulating material class CTI 600

Overvoltage category III III II

Pollution degree 3 2 2

Rated voltage 250 630 630

Rated test voltage 2.5 6 4

Protection category according to IEC 529 IP20

Tightening torque UL 7 lb-in max.

Min. insul. strip length 9.5 mm

Solder pin dimension 1.5 x 1.5 mm

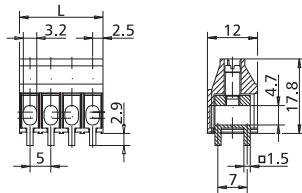
Recommended pc board hole dia. Ø 2.4 mm

Solder pin length 2.9 mm

Pole size 2 - 12

Color black

Dimensions in mm 1 mm = 0.0394 in.



L = (pole size - 1) x centerline + 5 mm / 0.197 inches

Type 094

Screw type terminal block, solderable, centerline 5 mm / 0.197 inches, horizontal wire entry, lift system, modular

Technical Data

RIAus V / A / AWG 300 / 10 / 26 - 16

CE 0.12 - 1.5 mm² 160 V / 4 kV / 13.5 A

Insulation co-ordination according to IEC 664-1

Clearance and creepage distances min. 3.2 mm

Insulating material class CTI 600

Overvoltage category III III II

Pollution degree 3 2 2

Rated voltage 250 630 630

Rated test voltage 2.5 6 4

Protection category according to IEC 529 IP20

Tightening torque UL 7 lb-in max.

Min. insul. strip length 6 mm

Solder pin dimension 0.5 x 1.0 mm

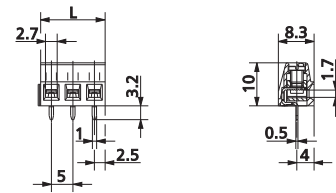
Recommended pc board hole dia. Ø 1.3 mm

Solder pin length 3.2 mm

Pole size 2 - 24

Color black

Dimensions in mm 1 mm = 0.0394 in.



L = (pole size - 1) x centerline + 5 mm / 0.197 inches

Part numbers (P/N)

(informations: page 60)

Complete the part number by adding the pole size.

Type 170

centerline 5 mm / 0.197 inches

P/N 311701

	02	03	04	05	06	07	08
<input type="text"/>	09	10	11	12			

Part numbers (P/N)

(informations: page 60)

Complete the part number by adding the pole size.

Type 094

centerline 5 mm / 0.197 inches

P/N 310941

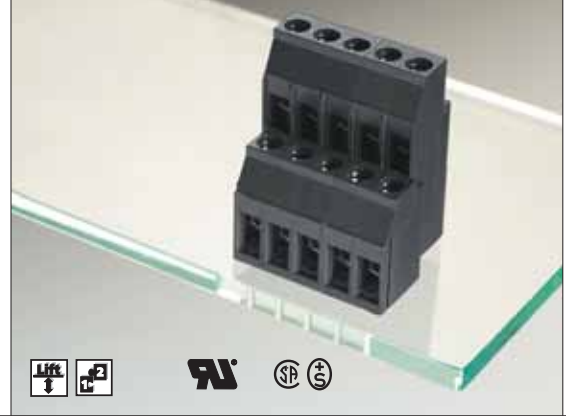
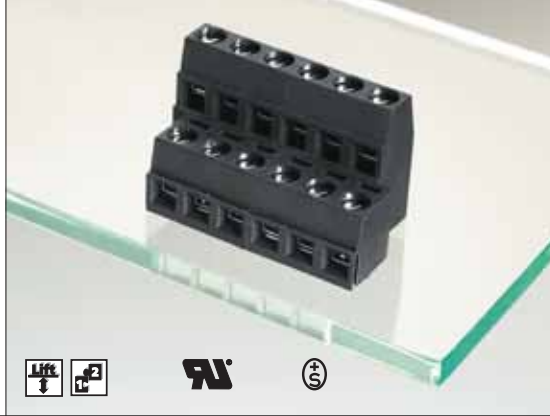
	02	03	04	05	06	07	08
<input type="text"/>	09	10	11	12	13	14	15
	17	18	19	20	21	22	23
							24

Standard pole sizes

Available on demand. Minimum order quantity 5000 pieces per item.

Standard pole sizes

Available on demand. Minimum order quantity 5000 pieces per item.



Accessories

for Type 092

Cover

711401 page 181

Type 092 is modular to Type 094

Note for wire range

Additional wire sizes and/or combinations of same size wires as follows:

Type 96

- ## 2 No. 22 - 16 AWG (field-wiring);
- 2 No. 30 - 16 AWG or
- 1 No. 30 - 12 AWG (factory-wiring)

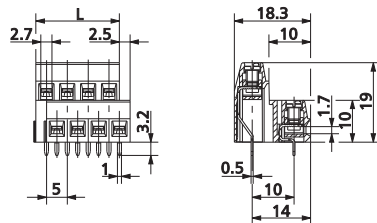
Type 092

Screw type terminal block, solderable, centerline 5 mm / 0.197 inches, horizontal wire entry, lift system, modular, two-tier terminal block

Technical Data

	V / A / AWG	300 / 10 / 26 - 16
	0.12 - 1.5 mm ²	160 V / 4 kV / 13.5 A
Insulation co-ordination according to IEC 664-1		
Clearance and creepage distances	min. 3.2 mm	
Insulating material class	CTI 600	
Overvoltage category	III	III II
Pollution degree	3	2 2
Rated voltage	250	630 630
Rated test voltage	2.5	6 4
Protection category according to IEC 529	IP20	
Tightening torque UL	7 lb-in max.	
Min. insul. strip length	6 mm	
Solder pin dimension	2 x 0.5 x 1.0 mm	
Recommended pc board hole dia.	Ø 1.3 mm	
Solder pin length	3.2 mm	
Pole size	4 - 16	
Color	black	

Dimensions in mm 1 mm = 0.0394 in.



L = (pole size - 1) x centerline + 5 mm / 0.197 inches

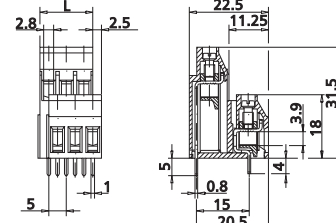
Type 096

Screw type terminal block, solderable, centerline 5 mm / 0.197 inches, horizontal wire entry, lift system, modular, two-tier terminal block

Technical Data

	V / A / AWG	300 / 20 / 22 - 12
	0.33 - 2.5 mm ²	250 V / 4 kV / 16 A
Insulation co-ordination according to IEC 664-1		
Clearance and creepage distances	min. 4 mm	
Insulating material class	CTI 600	
Overvoltage category	III	III II
Pollution degree	3	2 2
Rated voltage	320	800 800
Rated test voltage	4	6 4
Protection category according to IEC 529	IP20	
Tightening torque UL	6 lb-in max.	
Min. insul. strip length	6 mm	
Solder pin dimension	2 x 0.8 x 1.0 mm	
Recommended pc board hole dia.	Ø 1.4 mm	
Solder pin length	5 and 4 mm	
Pole size	4 - 6	
Color	black	

Dimensions in mm 1 mm = 0.0394 in.



L = (pole size - 1) x centerline + 5 mm / 0.197 inches

Part numbers (P/N)

(informations: page 60)

Complete the part number by adding the pole size.

Type 092

centerline 5 mm / 0.197 inches

P/N 310921

	04	06	08	10	12	14	16
<input type="checkbox"/>							

Part numbers (P/N)

(informations: page 60)

Complete the part number by adding the pole size.

Type 096

centerline 5 mm / 0.197 inches

P/N 310961

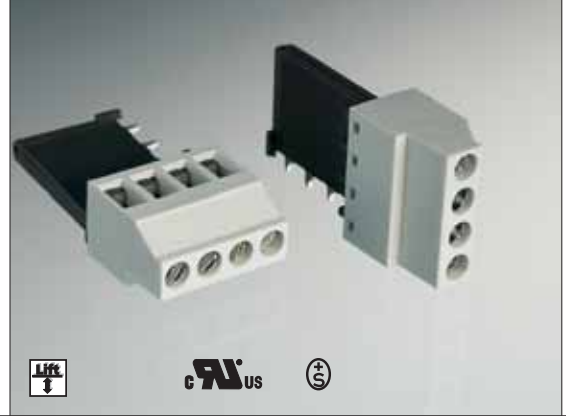
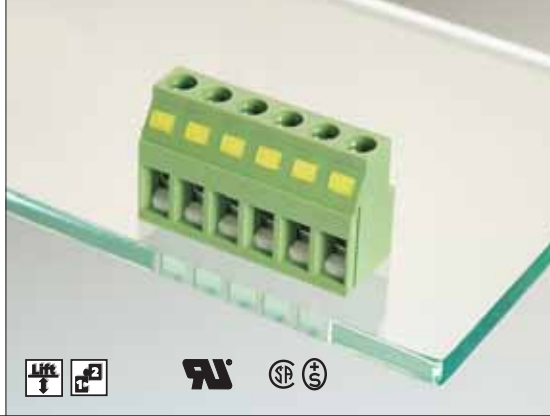
	04	06				
<input type="checkbox"/>						

Standard pole sizes

Available on demand. Minimum order quantity 5000 pieces per item.

Standard pole sizes

Available on demand. Minimum order quantity 5000 pieces per item.



Note for Type 65

Distribution terminal block
The contact bodies are all interconnected to act as a "shorting" or "ground" block.

Protective grounding terminal block



Note for wire range

Additional wire sizes and/or combinations of same size wires as follows:

Type 65

- ## 2 No. 22 - 16 AWG (field-wiring);
- 2 No. 30 - 16 AWG or
- 1 No. 30 - 12 AWG (factory-wiring)

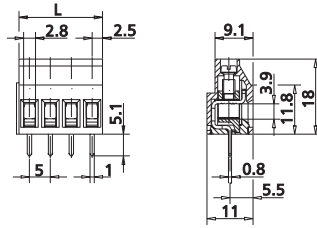
Type 065

Screw type terminal block, solderable, centerline 5 mm / 0.197 inches, horizontal wire entry, lift system, modular

Technical Data

	V / A / AWG	300 / 20 / 22 - 12
	V / A / AWG	300 / 20 / 22 - 12
	0.33 - 2.5 mm ²	250 V / 4 kV / 16 A
Insulation co-ordination according to IEC 664-1		
Clearance and creepage distances	min. 4 mm	
Insulating material class	CTI 600	
Overvoltage category	III	III II
Pollution degree	3	2 2
Rated voltage	320	800 800
Rated test voltage	4	6 4
Protection category according to IEC 529	IP20	
Tightening torque UL	6 lb-in max.	
Min. insul. strip length	8 mm	
Solder pin dimension	0.8 x 1.0 mm	
Recommended pc board hole dia.	Ø 1.4 mm	
Solder pin length	5.1 mm	
Pole size	2 - 12	
Color	green	

Dimensions in mm 1 mm = 0.0394 in.



L = (pole size - 1) x centerline + 5 mm / 0.197 inches

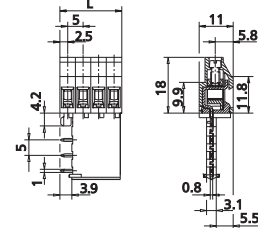
Type 385

Screw type terminal block, solderable, centerline 5 mm / 0.197 inches, horizontal wire entry, lift system, solder pins right-angled to the left

Technical Data

	V / A / AWG	300 / 20 / 20 - 12
	0.52 - 2.5 mm ²	250 V / 4 kV / 16 A
Insulation co-ordination according to IEC 664-1		
Clearance and creepage distances	min. 4 mm	
Insulating material class	CTI 600	
Overvoltage category	III	III II
Pollution degree	3	2 2
Rated voltage	320	800 800
Rated test voltage	4	6 4
Protection category according to IEC 529	IP20	
Tightening torque UL	4 lb-in max.	
Min. insul. strip length	8 mm	
Solder pin dimension	cf. drawing	
Recommended pc board hole dia.	Ø 1.4 mm	
Solder pin length	3.9 mm	
Pole size	2 - 5	
Color	grey	

Dimensions in mm 1 mm = 0.0394 in.



L = (pole size - 1) x centerline + 5 mm / 0.197 inches

Part numbers (P/N)

(informations: page 60)

Type 065

centerline 5 mm / 0.197 inches

P/N 310651

Complete the part number by adding the pole size.

	02	03	04	05	06	07	08
09	10	11	12				

Part numbers (P/N)

(informations: page 60)

Type 385

centerline 5 mm / 0.197 inches

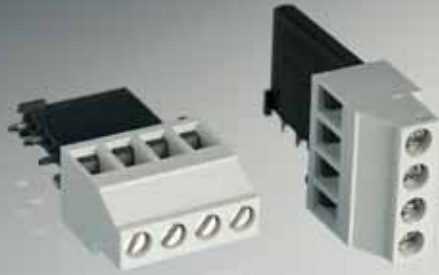
P/N 313851

Complete the part number by adding the pole size.

	02	03	04	05			

- Standard pole sizes
- Available on demand. Minimum order quantity 5000 pieces per item.

- Standard pole sizes
- Available on demand. Minimum order quantity 5000 pieces per item.



Type 386

Screw type terminal block, solderable, centerline 5 mm / 0.197 inches, horizontal wire entry, lift system, solder pins right-angled to the right

Technical Data

RIA US V / A / AWG 300 / 20 / 20 - 12

Ⓢ 0.52 - 2.5 mm² 250 V / 4 kV / 16 A

Insulation co-ordination according to IEC 664-1

Clearance and creepage distances min. 4 mm

Insulating material class CTI 600

Overvoltage category III III II

Pollution degree 3 2 2

Rated voltage 320 800 800

Rated test voltage 4 6 4

Protection category according to IEC 529 IP20

Tightening torque UL 4 lb-in max.

Min. insul. strip length 8 mm

Solder pin dimension cf. drawing

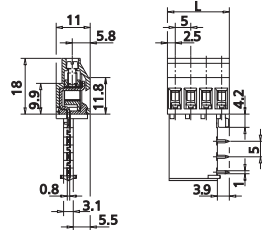
Recommended pc board hole dia. Ø 1.4 mm

Solder pin length 3.9 mm

Pole size 2 - 4

Color grey

Dimensions in mm 1 mm = 0.0394 in.



L = (pole size - 1) x centerline + 5 mm / 0.197 inches

Part numbers (P/N)

(informations: page 60)

Complete the part number by adding the pole size.

Type 386

centerline 5 mm / 0.197 inches

P/N 313861

	02	03	04				

Standard pole sizes

Available on demand. Minimum order quantity 5000 pieces per item.