

Terminal blocks

to Type 265

Type 262 page 104

Accessories

for Type 265

Coding set 700024 page 180

Type 265

Header, centerline 7.62 mm / 0.300 inches, horizontal mounting, square contact pins 1 mm / 0.039 inches, open ends, codable

Technical Data

V / A 300 / 15

500 V / 6 kV / 10 A

Insulation co-ordination according to IEC 664-1

Clearance and creepage distances min. 6.6 mm

Insulating material class CTI 600

Overvoltage category III III II

Pollution degree 3 2 2

Rated voltage 500 1250 1250

Rated test voltage 4 8 6

Protection category according to IEC 529 IP00

Solder pin dimension 1.0 x 1.0 mm

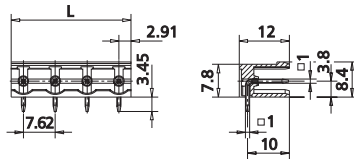
Recommended pc board hole dia. Ø 1.5 mm

Solder pin length 3.45 mm

Pole size 2 - 12

Color black

Dimensions in mm 1 mm = 0.0394 in.



$L = (\text{pole size} - 1) \times \text{centerline} + 5.82 \text{ mm} / 0.229 \text{ inches}$

Part numbers (P/N)

(informations: page 111)

Complete the part number by adding the pole size.

Type 265

centerline 7.62 mm / 0.300 inches

P/N 312651

	02	03	04	05	06	07	08
<input type="text"/>	09	10	11	12			

Standard pole sizes

Available on demand. Minimum order quantity 5000 pieces per item.