

Terminal blocks

to **Type 230** and **Type 178**

- ASP046** page 53
- Type 213** page 102
- Type 214** page 102
- Type 249** page 100
- Type 250** page 100

Accessories
for **Type 230** and **Type 178**
Coding set
700024 page 180

Note for Type 178

Packaging for automated processing is available on demand. Please do not hesitate to contact us.

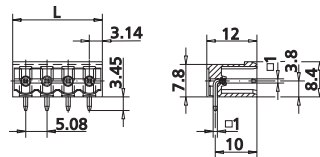
Type 230

Header, centerline 5.08 mm / 0.200 inches, horizontal mounting, square contact pins 1 mm / 0.039 inches, closed ends, codable

Technical Data

	V / A	300 / 15
	V / A	300 / 15
		250 V / 4 kV / 10 A
Insulation co-ordination according to IEC 664-1		
Clearance and creepage distances	min. 4.08 mm	
Insulating material class	CTI 600	
Overvoltage category	III	III II
Pollution degree	3	2 2
Rated voltage	320	800 800
Rated test voltage	4	6 4
Protection category according to IEC 529	IP00	
Solder pin dimension	1.0 x 1.0 mm	
Recommended pc board hole dia.	Ø 1.5 mm	
Solder pin length	3.45 mm	
Pole size	2 - 24	
Color	black	

Dimensions in mm 1 mm = 0.0394 in.



$L = (\text{pole size} - 1) \times \text{centerline} + 6.28 \text{ mm} / 0.247 \text{ inches}$

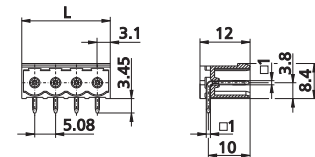
Type 178

Header, centerline 5.08 mm / 0.200 inches, horizontal mounting, designed for THR, optional Tape on Reel packaging for automated processing, square contact pins 1 mm / 0.039 inches, closed ends, codable

Technical Data

		250 V / 4 kV / 10 A
Insulation co-ordination according to IEC 664-1		
Clearance and creepage distances	min. 4.08 mm	
Insulating material class	CTI 600	
Overvoltage category	III	III II
Pollution degree	3	2 2
Rated voltage	320	800 800
Rated test voltage	4	6 4
Protection category according to IEC 529	IP00	
Solder pin dimension	1.0 x 1.0 mm	
Recommended pc board hole dia.	Ø 1.5 mm	
Solder pin length	3.45 mm	
Pole size	2 - 12	
Color	black	

Dimensions in mm 1 mm = 0.0394 in.



$L = (\text{pole size} - 1) \times \text{centerline} + 6.28 \text{ mm} / 0.247 \text{ inches}$

Part numbers (P/N)

(informations: page 111)

Type 230

centerline 5.08 mm / 0.200 inches

P/N 312301

	02	03	04	05	06	07	08
	09	10	11	12	13	14	15
	17	18	19	20	21	22	23
	24						

Type 230

centerline 10.16 mm / 0.400 inches

P/N 312302

	02	03	04	05	06	07	08
	09	10	11	12			

- Standard pole sizes
- Available on demand. Minimum order quantity 5000 pieces per item.

Part numbers (P/N)

(informations: page 111)

Type 178

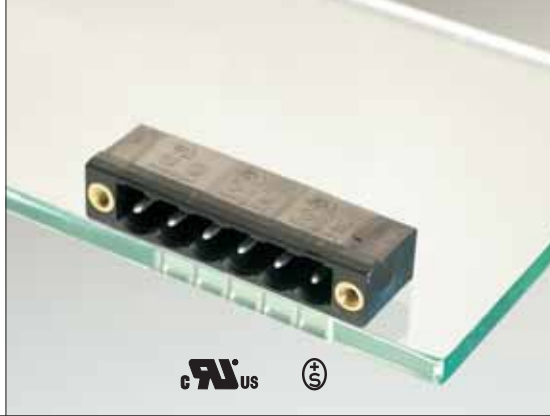
centerline 5.08 mm / 0.200 inches

P/N 311781

	02	03	04	05	06	07	08
	09	10	11	12			

* approval pending

- Standard pole sizes
- Available on demand. Minimum order quantity 5000 pieces per item.



Terminal blocks

to Type 236

Type 217 page 103

Type 218 page 103

Type 251 page 101

Accessories

for Type 236

Coding set
700024 page 180

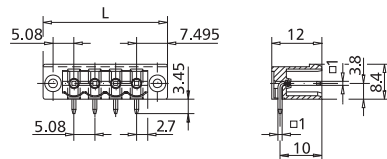
Type 236

Header, centerline 5.08 mm / 0.200 inches, horizontal mounting, square contact pins 1 mm / 0.039 inches, mounting flange, codable

Technical Data

V / A	300 / 15		
	400 V / 4 kV / 10 A		
Insulation co-ordination according to IEC 664-1			
Clearance and creepage distances	min. 4.08 mm		
Insulating material class	CTI 600		
Overvoltage category	III	III	II
Pollution degree	3	2	2
Rated voltage	320	800	800
Rated test voltage	4	6	4
Protection category according to IEC 529	IP00		
Solder pin dimension	1.0 x 1.0 mm		
Recommended pc board hole dia.	Ø 1.5 mm		
Solder pin length	3.45 mm		
Pole size	2 - 24		
Color	black		

Dimensions in mm 1 mm = 0.0394 in.



$L = (\text{pole size} - 1) \times \text{centerline} + 14.99 \text{ mm} / 0.590 \text{ inches}$

Part numbers (P/N)

(informations: page 111)

Complete the part number by adding the pole size.

Type 236

centerline 5.08 mm / 0.200 inches

P/N 312361

<input type="text"/>	02	03	04	05	06	07	08	
	09	10	11	12	13	14	15	16
	17	18	19	20	21	22	23	24

Type 236

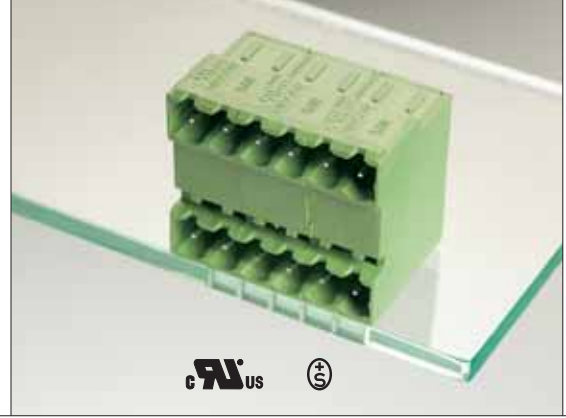
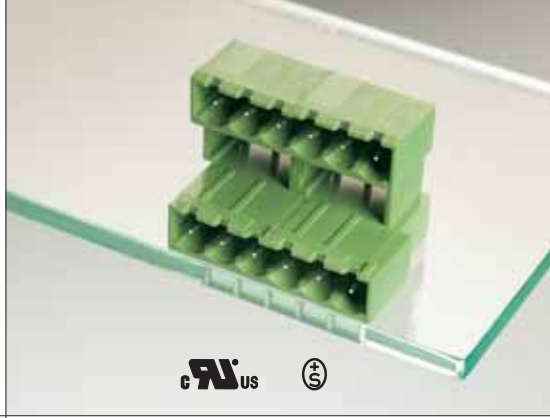
centerline 10.16 mm / 0.400 inches

P/N 312362

<input type="text"/>	02	03	04	05	06	07	08
	09	10	11	12			

Standard pole sizes

Available on demand. Minimum order quantity 5000 pieces per item.



Terminal blocks

to **Type 288** and **Type 292**

- ASP046** page 53
- Type 214** page 102
- Type 249** page 100
- Type 250** page 100

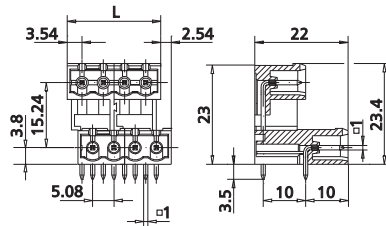
Type 288

Header, centerline 5.08 mm / 0.200 inches, horizontal mounting, square contact pins 1 mm / 0.039 inches, closed ends, staggered pins

Technical Data

	V / A	300 / 15		
		300 V / 4 kV / 12 A		
Insulation co-ordination according to IEC 664-1				
Clearance and creepage distances	min.	4.08 mm		
Insulating material class		CTI 600		
Overvoltage category		III	III	II
Pollution degree		3	2	2
Rated voltage		320	800	800
Rated test voltage		4	6	4
Protection category according to IEC 529				
		IP00		
Solder pin dimension		1.0 x 1.0 mm		
Recommended pc board hole dia.		Ø 1.5 mm		
Solder pin length		3.5 mm		
Pole size		4 - 48		
Color		green		

Dimensions in mm 1 mm = 0.0394 in.



L = (pole size - 1) x centerline + 7.08 mm / 0.279 inches

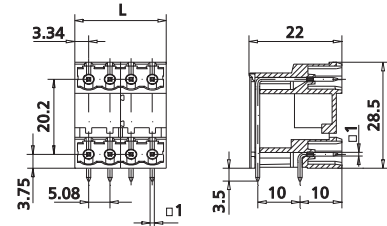
Type 292

Header, centerline 5.08 mm / 0.200 inches, horizontal mounting, square contact pins 1 mm / 0.039 inches, closed ends

Technical Data

	V / A	300 / 15		
		300 V / 4 kV / 12 A		
Insulation co-ordination according to IEC 664-1				
Clearance and creepage distances	min.	4.08 mm		
Insulating material class		CTI 600		
Overvoltage category		III	III	II
Pollution degree		3	2	2
Rated voltage		320	800	800
Rated test voltage		4	6	4
Protection category according to IEC 529				
		IP00		
Solder pin dimension		1.0 x 1.0 mm		
Recommended pc board hole dia.		Ø 1.5 mm		
Solder pin length		3.5 mm		
Pole size		4 - 48		
Color		green		

Dimensions in mm 1 mm = 0.0394 in.



L = (pole size - 1) x centerline + 6.68 mm / 0.263 inches

Part numbers (P/N)

(informations: page 111)

Type 288

centerline 5.08 mm / 0.200 inches

P/N 312881



Complete the part number by adding the pole size.

	04	06	08	10	12	14	16
18	20	22	24	26	28	30	32
34	36	38	40	42	44	46	48

Part numbers (P/N)

(informations: page 111)

Type 292

centerline 5.08 mm / 0.200 inches

P/N 312921



Complete the part number by adding the pole size.

	04	06	08	10	12	14	16
18	20	22	24	26	28	30	32
34	36	38	40	42	44	46	48

- Standard pole sizes
- Available on demand. Minimum order quantity 5000 pieces per item.

- Standard pole sizes
- Available on demand. Minimum order quantity 5000 pieces per item.