

**Terminal blocks**

to **Type 220** and **Type 179**

- ASP046** page 53
- Type 213** page 102
- Type 214** page 102
- Type 249** page 100
- Type 250** page 100

**Accessories**  
for **Type 220** und **Type 179**  
**Coding set**  
700024 page 180

**Note for Type 179**  
Packaging for automated processing is available on demand.  
Please do not hesitate to contact us.

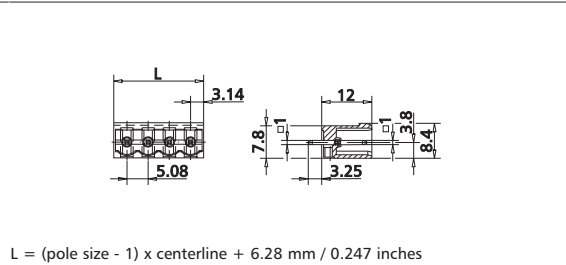
**Type 220**

Header, centerline 5.08 mm / 0.200 inches, vertical mounting, square contact pins 1 mm / 0.039 inches, closed ends, codable

**Technical Data**

	V / A	300 / 15
	V / A	300 / 15
		250 V / 4 kV / 10 A
Insulation co-ordination according to IEC 664-1		
Clearance and creepage distances	min. 4.08 mm	
Insulating material class	CTI 600	
Overvoltage category	III	III II
Pollution degree	3	2 2
Rated voltage	320	800 800
Rated test voltage	4	6 4
Protection category according to IEC 529	IP00	
Solder pin dimension	1.0 x 1.0 mm	
Recommended pc board hole dia.	Ø 1.5 mm	
Solder pin length	3.25 mm	
Pole size	2 - 24	
Color	black	

Dimensions in mm 1 mm = 0.0394 in.



$L = (\text{pole size} - 1) \times \text{centerline} + 6.28 \text{ mm} / 0.247 \text{ inches}$

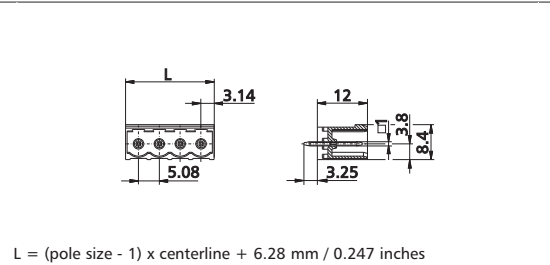
**Type 179**

Header, centerline 5.08 mm / 0.200 inches, vertical mounting, designed for THR, optional Tape on Reel packaging for automated processing, square contact pins 1 mm / 0.039 inches, closed ends, codable

**Technical Data**

		250 V / 4 kV / 10 A
Insulation co-ordination according to IEC 664-1		
Clearance and creepage distances	min. 4.08 mm	
Insulating material class	CTI 600	
Overvoltage category	III	III II
Pollution degree	3	2 2
Rated voltage	320	800 800
Rated test voltage	4	6 4
Protection category according to IEC 529	IP00	
Solder pin dimension	1.0 x 1.0 mm	
Recommended pc board hole dia.	Ø 1.5 mm	
Solder pin length	3.25 mm	
Pole size	2 - 12	
Color	black	

Dimensions in mm 1 mm = 0.0394 in.



$L = (\text{pole size} - 1) \times \text{centerline} + 6.28 \text{ mm} / 0.247 \text{ inches}$

**Part numbers (P/N)** (informations: page 111)

**Type 220**

centerline 5.08 mm / 0.200 inches

P/N 312201

	02	03	04	05	06	07	08
	09	10	11	12	13	14	15
	17	18	19	20	21	22	23
	24						

**Type 220**

centerline 10.16 mm / 0.400 inches

P/N 312202

	02	03	04	05	06	07	08
	09	10	11	12			

- Standard pole sizes
- Available on demand. Minimum order quantity 5000 pieces per item.

**Part numbers (P/N)** (informations: page 111)

**Type 179**

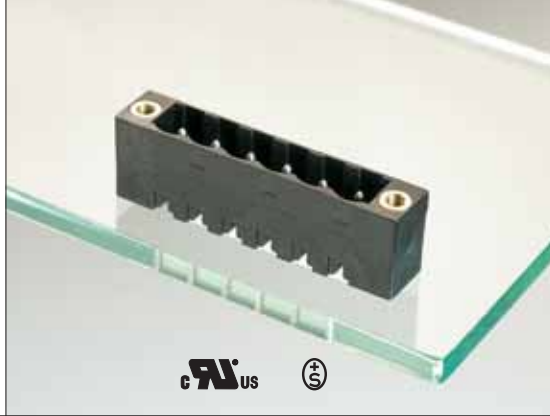
centerline 5.08 mm / 0.200 inches

P/N 311791

	02	03	04	05	06	07	08
	09	10	11	12			

\* approval pending

- Standard pole sizes
- Available on demand. Minimum order quantity 5000 pieces per item.



**Terminal blocks**

to Type 235

**Type 217** page 103

**Type 218** page 103

**Type 251** page 101

**Accessories**

for Type 235

**Coding set**  
700024 page 180

**Type 235**

Header, centerline 5.08 mm / 0.200 inches, vertical mounting, square contact pins 1 mm / 0.039 inches, mounting flange, codable

**Technical Data**

V / A 300 / 15

400 V / 4 kV / 10 A

Insulation co-ordination according to IEC 664-1

Clearance and creepage distances min. 4.08 mm

Insulating material class CTI 600

Overvoltage category III III II

Pollution degree 3 2 2

Rated voltage 320 800 800

Rated test voltage 4 6 4

Protection category according to IEC 529 IP00

Solder pin dimension 1.0 x 1.0 mm

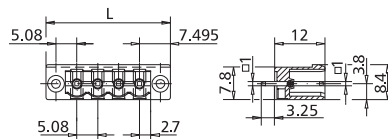
Recommended pc board hole dia. Ø 1.5 mm

Solder pin length 3.25 mm

Pole size 2 - 24

Color black

Dimensions in mm 1 mm = 0.0394 in.



L = (pole size - 1) x centerline + 14.99 mm / 0.590 inches

**Part numbers (P/N)**

(informations: page 111)

Complete the part number by adding the pole size.

**Type 235**

centerline 5.08 mm / 0.200 inches

P/N 312351

<input type="text"/>	02	03	04	05	06	07	08
09	10	11	12	13	14	15	16
17	18	19	20	21	22	23	24

**Type 235**

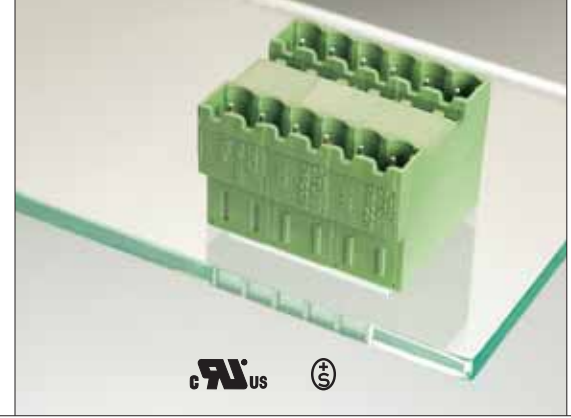
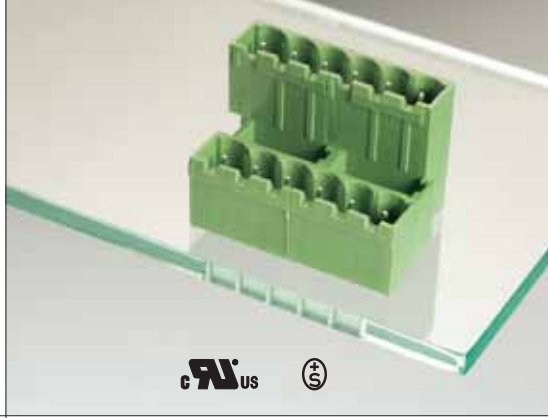
centerline 10.16 mm / 0.400 inches

P/N 312352

<input type="text"/>	02	03	04	05	06	07	08
09	10	11	12				

Standard pole sizes

Available on demand. Minimum order quantity 5000 pieces per item.



**Terminal blocks**

to **Type 286** and **Type 290**

- ASP046** page 53
- Type 214** page 102
- Type 249** page 100
- Type 250** page 100

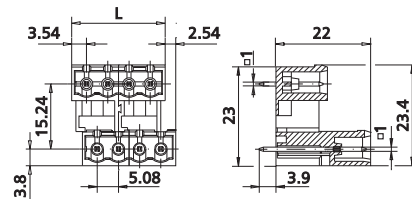
**Type 286**

Header, centerline 5.08 mm / 0.200 inches, vertical mounting, square contact pins 1 mm / 0.039 inches, closed ends, staggered pins

**Technical Data**

	V / A	300 / 15		
		300 V / 4 kV / 12 A		
Insulation co-ordination according to IEC 664-1				
Clearance and creepage distances	min.	4.08 mm		
Insulating material class		CTI 600		
Overvoltage category		III	III	II
Pollution degree		3	2	2
Rated voltage		320	800	800
Rated test voltage		4	6	4
Protection category according to IEC 529				
		IP00		
Solder pin dimension		1.0 x 1.0 mm		
Recommended pc board hole dia.		Ø 1.5 mm		
Solder pin length		3.9 mm		
Pole size		4 - 48		
Color		green		

Dimensions in mm 1 mm = 0.0394 in.



$L = (\text{pole size} - 1) \times \text{centerline} + 7.08 \text{ mm} / 0.279 \text{ inches}$

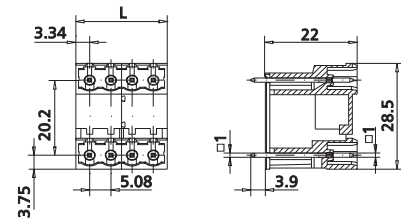
**Type 290**

Header, centerline 5.08 mm / 0.200 inches, vertical mounting, square contact pins 1 mm / 0.039 inches, closed ends

**Technical Data**

	V / A	300 / 15		
		300 V / 4 kV / 12 A		
Insulation co-ordination according to IEC 664-1				
Clearance and creepage distances	min.	4.08 mm		
Insulating material class		CTI 600		
Overvoltage category		III	III	II
Pollution degree		3	2	2
Rated voltage		320	800	800
Rated test voltage		4	6	4
Protection category according to IEC 529				
		IP00		
Solder pin dimension		1.0 x 1.0 mm		
Recommended pc board hole dia.		Ø 1.5 mm		
Solder pin length		3.9 mm		
Pole size		4 - 48		
Color		green		

Dimensions in mm 1 mm = 0.0394 in.



$L = (\text{pole size} - 1) \times \text{centerline} + 6.68 \text{ mm} / 0.263 \text{ inches}$

**Part numbers (P/N)**

(informations: page 111)

**Type 286**

centerline 5.08 mm / 0.200 inches

P/N 312861



Complete the part number by adding the pole size.

	04	06	08	10	12	14	16
18	20	22	24	26	28	30	32
34	36	38	40	42	44	46	48

**Part numbers (P/N)**

(informations: page 111)

**Type 290**

centerline 5.08 mm / 0.200 inches

P/N 312901



Complete the part number by adding the pole size.

	04	06	08	10	12	14	16
18	20	22	24	26	28	30	32
34	36	38	40	42	44	46	48

- Standard pole sizes
- Available on demand. Minimum order quantity 5000 pieces per item.

- Standard pole sizes
- Available on demand. Minimum order quantity 5000 pieces per item.