

**Note for wire range**

Additional wire sizes and/or combinations of same size wires as follows:

**Type 05**

#(2) Wire range extended to No. 26 AWG for factory-wiring.

Two same size wires 22 - 16 AWG Cu, Sol/Str for field; No. 26 - 16 AWG Cu, Sol/Str for factory.

+ Two same size wires No. 22 - 16 AWG Cu, Sol/Str for field-wiring; No. 30 - 16 AWG Cu, Sol/Str factory-wiring.

**Type 005**

Screw type terminal block, solderable, centerline 5 mm / 0.197 inches, wire entry 45°, wire protector

**Technical Data**

	V / A / AWG	300 / 20 / 22 - 12
	V / A / AWG	300 / 15 / 22 - 12
	0.33 - 2.5 mm <sup>2</sup>	250 V / 2.5 kV / 16 A
Insulation co-ordination according to IEC 664-1		
Clearance and creepage distances	min. 2.6 mm	
Insulating material class	CTI 600	
Overvoltage category	III	III II
Pollution degree	3	2 2
Rated voltage	200	500 500
Rated test voltage	2.5	4 2.5
Protection category according to IEC 529	IP20	
Tightening torque UL	7 lb-in max.	
Min. insul. strip length	8 mm	
Solder pin dimension	1 mm	
Recommended pc board hole dia.	Ø 1.3 mm	
Solder pin length	5 mm	
Pole size	2 - 12	
Color	black	

Dimensions in mm 1 mm = 0.0394 in.

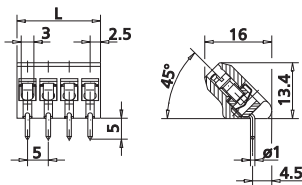
**Type 205**

Screw type terminal block, solderable, centerline 5 mm / 0.197 inches, wire entry 35°, lift system

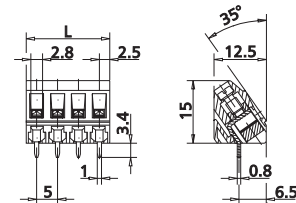
**Technical Data**

	V / A / AWG	300 / 15 / 28 - 12
	0.08 - 2.5 mm <sup>2</sup>	250 V / 4 kV / 16 A
Insulation co-ordination according to IEC 664-1		
Clearance and creepage distances	min. 3.2 mm	
Insulating material class	CTI 600	
Overvoltage category	III	III II
Pollution degree	3	2 2
Rated voltage	250	630 630
Rated test voltage	2.5	6 4
Protection category according to IEC 529	IP20	
Tightening torque UL	6 lb-in max.	
Min. insul. strip length	7 mm	
Solder pin dimension	0.8 x 1.0 mm	
Recommended pc board hole dia.	Ø 1.4 mm	
Solder pin length	3.4 mm	
Pole size	2 - 24	
Color	black	

Dimensions in mm 1 mm = 0.0394 in.



L = (pole size - 1) x centerline + 5 mm / 0.197 inches



L = (pole size - 1) x centerline + 5 mm / 0.197 inches

**Part numbers (P/N)**

(informations: page 60)

**Type 005**

centerline 5 mm / 0.197 inches

P/N 310051

Complete the part number by adding the pole size.

	02	03	04	05	06	07	08
	09	10	11	12			

**Part numbers (P/N)**

(informations: page 60)

**Type 205**

centerline 5 mm / 0.197 inches

P/N 312051

Complete the part number by adding the pole size.

	02	03	04	05	06	07	08
	09	10	11	12	13	14	15
	17	18	19	20	21	22	23
							24

**Type 205**

centerline 10 mm / 0.394 inches

P/N 312052

	02	03	04	05	06	07	08
	09	10	11	12			

Standard pole sizes  
 Available on demand. Minimum order quantity 5000 pieces per item.

Standard pole sizes  
 Available on demand. Minimum order quantity 5000 pieces per item.