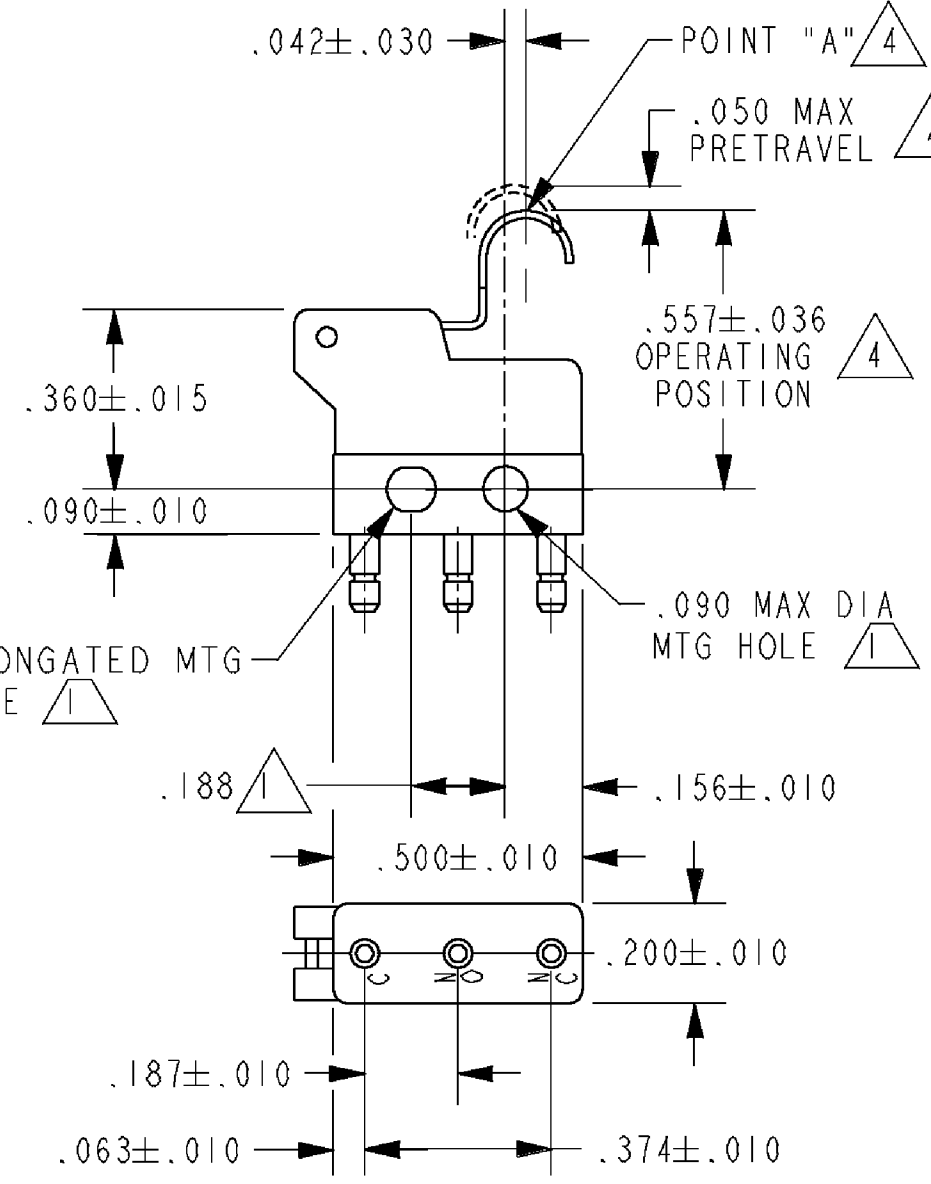
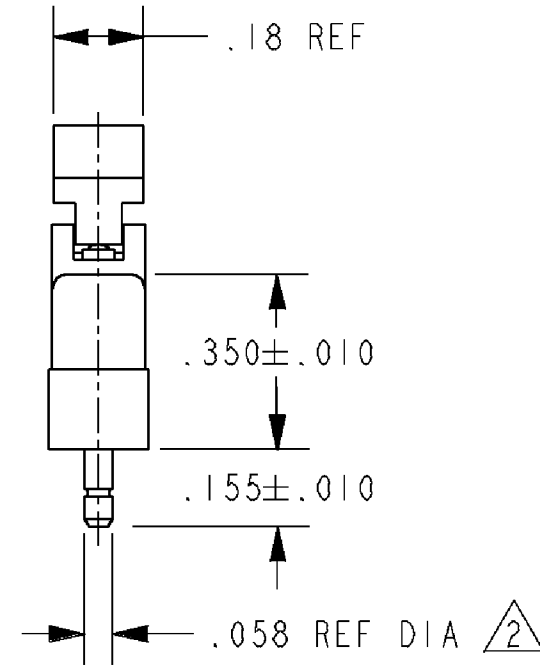
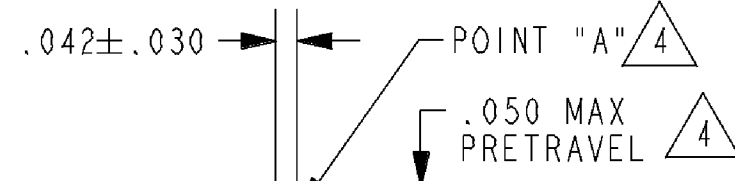
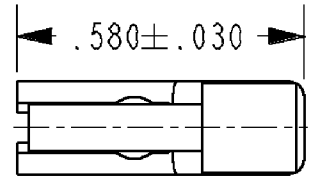


HONEYWELL PART NUMBER
311SX54-H58
PRODUCT CODE
VDS0410

REV	DOCUMENT	CHANGED BY	CHECK
5	0038558	SS 08MAY08	BLR



- NOTES
- 1 MOUNTING HOLES WILL ACCEPT PINS OR SCREWS OF .087 MAX DIA OF .188 ± .002 CENTERS
 - 2 PLATED TERMINALS WILL ACCEPT "AMP INC" .058 DIA PIN RECEPTACLES
 - 3 SWITCH WILL WITHSTAND TEMPERATURE OF 250° F
 - 4 CHARACTERISTICS ARE TAKEN AT POINT "A"

RELEASE NO.	PR-16660
REPLACES	

CHARACTERISTICS ⁴
OPERATING FORCE - - - 60 GRAM MAX
RELEASE FORCE - - - 11 GRAM MIN
DIFFERENTIAL TRAVEL - - .015 MAX
OVERTRAVEL - - - - .010 MIN

ELECTRICAL DATA			
CONTACT ARRANGEMENT SPDT			
28 VOLTS DC RATING		115 VOLTS AC, 60 CPS	
SEA LEVEL	50,000 FT	SEA LEVEL	
INDUCTIVE	3 AMP	2 AMP	5 AMP
RESISTIVE	5 AMP	4 AMP	5 AMP
APPROVALS	KEMA, CE 5A 250 V ~ T125 5E4 UL, CSA 5A 250 VAC L4L		

DESIGN UNITS: INCH
TOLERANCES UNLESS NOTED:
NO PLACE X ±
ONE PLACE .X ±
TWO PLACE .XX ±
THREE PLACE .XXX ±
FOUR PLACE .XXXX ±
ANGLES ±
THIRD ANGLE PROJECTION

DRAWN	SPK	26FEB08
CHECK	RJ	26FEB08
THIS DRAWING COVERS A PROPRIETARY ITEM AND IS THE PROPERTY OF HONEYWELL. THIS DRAWING IS NOT TO BE COPIED OR USED WITHOUT THE PERMISSION OF HONEYWELL.		
INTERPRET PER ANSI Y14.5M-1982 OTHER HONEYWELL ENGINEERING STANDARDS MAY APPLY		
RASTER		

Honeywell			
TITLE SWITCH - BASIC			
SIZE	TYPE	DRAWING NAME	REV
B	I	311SX54-H58	5
SCALE	-	WEIGHT: .003 LB MAX	SHEET 1 OF 1