

MICRO SWITCH

FREEPORT ILLINOIS U.S.A.
A DIVISION OF HONEYWELL

FED. MFG. CODE 91929

SWITCH-BASIC

CATALOG LISTING
311SX4-T

REPLACES X41462-SX

CATALOG LISTING
311SX4-T
PAGE 1 OF 1

M

DRAWING NUMBER
X8 12

ISSUE
3 X

RELEASE NO. PR - 861

CHECK

REVISIONS

A 201033
DLT
22 AUG 00

CHECK

1 MAY 69

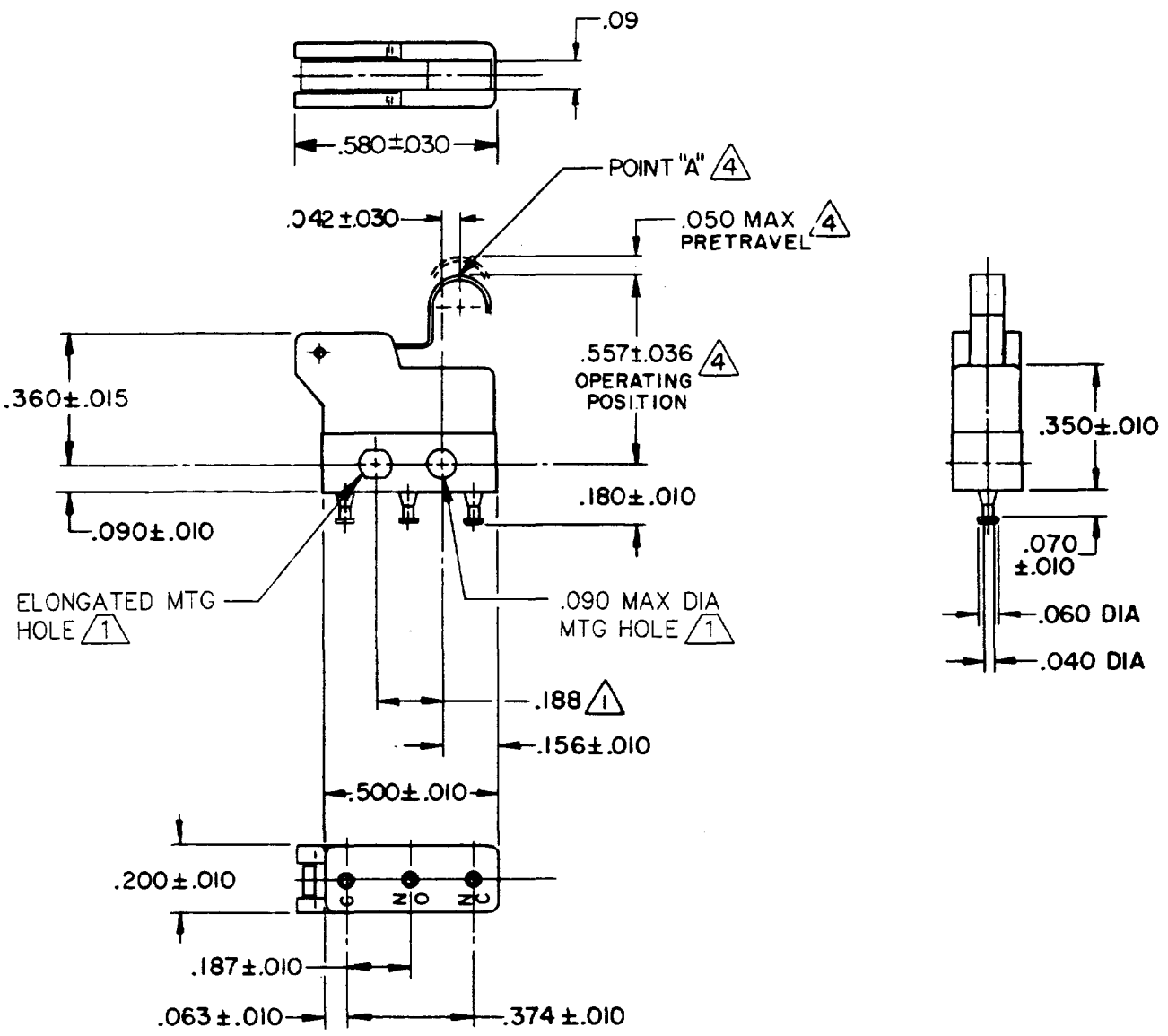
DCS

CHECK

69 FEB 19

DRAWN

FORMTEK
FO-80378-1A



- NOTE-
- (1) MOUNTING HOLES WILL ACCEPT PINS OR SCREWS OF $.087$ MAX DIA ON $.188 \pm .002$ CENTERS
 - 2 - TERMINALS ARE PLATED FOR SOLDERING
 - 3 - SWITCH WILL WITHSTAND TEMPERATURE OF 250° F
 - (4) CHARACTERISTICS ARE TAKEN AT POINT "A"

THIS DRAWING COVERS A PROPRIETARY ITEM AND IS THE PROPERTY OF MICRO SWITCH, A DIVISION OF HONEYWELL. THIS DRAWING IS NOT TO BE COPIED OR USED WITHOUT THE APPROVAL OF MICRO SWITCH.

CHARACTERISTICS	(4)
OPERATING FORCE	60 GRAM MAX
RELEASE FORCE	11 GRAM MIN
DIFFERENTIAL TRAVEL	.015 MAX
OVERTRAVEL	.010 MIN

ELECTRICAL DATA	
CONTACT ARRANGEMENT SPDT	
28 VOLTS DC RATING	
INDUCTIVE	SEA LEVEL - 3 AMP
	50,000 FT - 2 AMP
RESISTIVE	SEA LEVEL - 5 AMP
	50,000 FT - 4 AMP
115 VOLTS AC, 60 CPS	
INDUCTIVE	SEA LEVEL - 5 AMP
RESISTIVE	SEA LEVEL - 5 AMP

SCALE 2 TO 1		
DO NOT SCALE PRINT		
UNLESS OTHERWISE NOTED		
DIMENSIONS ARE IN INCHES		
TOLERANCES ARE:		
ONE PLACE	(.0)	$\pm .030$
TWO PLACE	(.00)	$\pm .015$
THREE PLACE	(.000)	$\pm .005$
ANGLES		\pm
WEIGHT .003 LB MAX		

APPROVALS	
DEMKO,CE	5A 250V ~ T125 5E4
UL, CSA	5A 250 VAC BRAND L4L