

MICRO SWITCH

FREEMONT ILLINOIS, U.S.A.
A DIVISION OF HONEYWELL

FED. MFG. CODE 91929

SWITCH-BASIC

CATALOG LISTING

311SX2-T

5

REPLACES X41465-SX

311SX2-T
PAGE 1 OF 1

M

DRAWING NUMBER

10

ISSUE

RELEASE NO. PR-861

CHECK

REVISIONS

A	PR-861 CO-26311
D L F	3 SEP 69
B	CO27064
SRH	18 MAR 70
C	CO27302
M B S	15 APR 70
D	CO27999
M B S	25 SEP 70
E	CO28341
M J B	18 DEC 70
F	CO46560
K A K	9 OCT 79
G	CO-61432
J A S	29 DEC 87
H	CO71574
J A L	4 JUN 92
J	201033
DLT	22 AUG 00

CHECK

IMAY 62

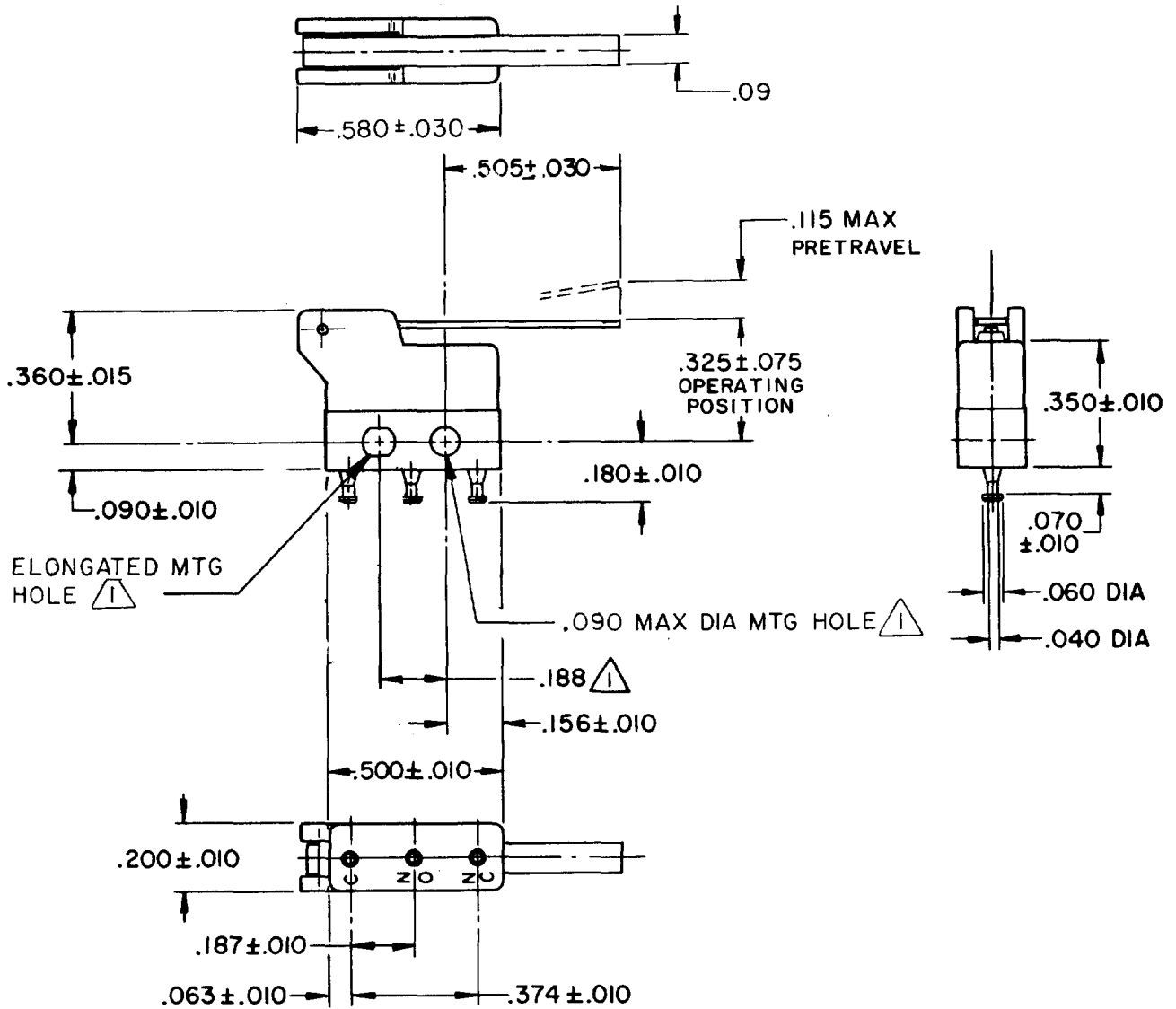
CHECK

G F S 20 FEB 69

FORMTEK

FO-50378-1A

DRAWN



NOTE -

- 1 MOUNTING HOLES WILL ACCEPT PINS OR SCREWS OF $.087$ MAX DIA ON $.188 \pm .002$ CENTERS
- 2 - TERMINALS ARE PLATED FOR SOLDERING
- 3 - SWITCH WILL WITHSTAND TEMPERATURE OF $250^\circ F$

THIS DRAWING COVERS A PROPRIETARY ITEM AND IS THE PROPERTY OF MICRO SWITCH, A DIVISION OF HONEYWELL. THIS DRAWING IS NOT TO BE COPIED OR USED WITHOUT THE APPROVAL OF MICRO SWITCH.

CHARACTERISTICS

OPERATING FORCE --- 30 GRAM MAX
RELEASE FORCE --- 5 GRAM MIN
DIFFERENTIAL TRAVEL --- .035 MAX
OVERTRAVEL --- .025 MIN

ELECTRICAL DATA

CONTACT ARRANGEMENT
SPDT
28 VOLTS DC RATING
INDUCTIVE --- SEA LEVEL --- 3 AMP
50,000 FT --- 2 AMP
RESISTIVE --- SEA LEVEL --- 5 AMP
50,000 FT --- 4 AMP
115 VOLTS AC, 60 CPS
INDUCTIVE --- SEA LEVEL --- 5 AMP
RESISTIVE --- SEA LEVEL --- 5 AMP

SCALE 2 TO 1

DO NOT SCALE PRINT

UNLESS OTHERWISE NOTED

DIMENSIONS ARE IN INCHES

TOLERANCES ARE:

ONE PLACE (.0)	$\pm .030$
TWO PLACE (.00)	$\pm .015$
THREE PLACE (.000)	$\pm .005$
ANGLES	$\pm .005$

WEIGHT

APPROVALS

DEMKO,CE
UL, CSA

5A 250V ~ T125 5E4
5A 250 VAC



BRAND L4L