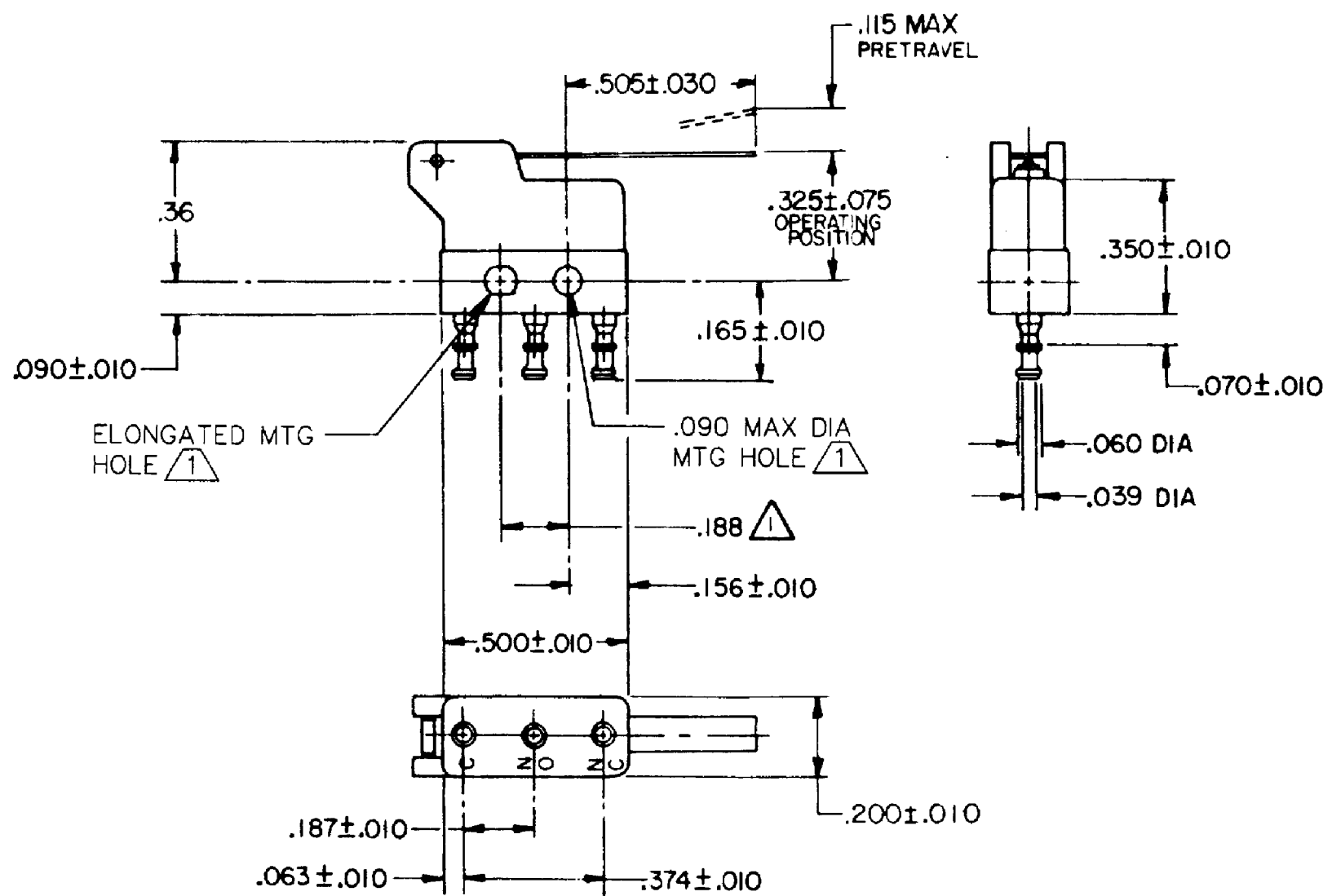
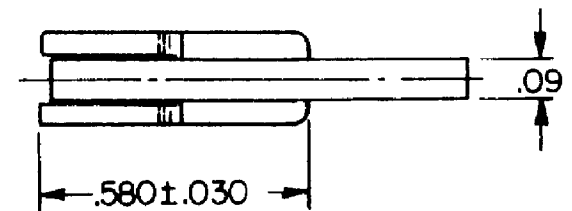


HONEYWELL PART NUMBER
311SX2-T2
PRODUCT CODE VDS0021

REV	DOCUMENT	CHANGED BY	CHECK
6	0038558	SS 08MAY08	BLR



- NOTES
- 1 MOUNTING HOLES WILL ACCEPT PINS OR SCREWS OF .087 MAX DIA ON .188 ± .002 CENTERS
  - 2 - TERMINALS ARE PLATED FOR SOLDERING
  - 3 - SWITCH WILL WITHSTAND TEMPERATURE OF 250°F

RELEASE NO.	PR-15237
REPLACES	

CHARACTERISTICS	
OPERATING FORCE	— — — 30 GRAM MAX
RELEASE FORCE	— — — — 5 GRAM MIN
DIFFERENTIAL TRAVEL	— — .035 MAX
OVERTRAVEL	— — — — .025 MIN

ELECTRICAL DATA			
CONTACT ARRANGEMENT SPDT			
	28 VOLTS DC RATING		115 VOLTS AC, 60 CPS
	SEA LEVEL	50,000 FT	SEA LEVEL
INDUCTIVE	3 AMP	2 AMP	5 AMP
RESISTIVE	5 AMP	4 AMP	5 AMP
APPROVALS	KEMA, CE	5A 250 V - T125 5E4	UL, CSA
	UL, CSA	5A 250 VAC	UL, CSA

DESIGN UNITS: INCH
TOLERANCES UNLESS NOTED:
NO PLACE X ±
ONE PLACE .X ±
TWO PLACE .XX ±
THREE PLACE .XXX ±
FOUR PLACE .XXXX ±
ANGLES ±
THIRD ANGLE PROJECTION

DRAWN	SPK	26FEB08
CHECK	RJ	26FEB08
THIS DRAWING COVERS A PROPRIETARY ITEM AND IS THE PROPERTY OF HONEYWELL. THIS DRAWING IS NOT TO BE COPIED OR USED WITHOUT THE PERMISSION OF HONEYWELL.		
INTERPRET PER ANSI Y14.5M-1982 OTHER HONEYWELL ENGINEERING STANDARDS MAY APPLY		
RASTER		

<b>Honeywell</b>			
TITLE <b>SWITCH - BASIC</b>			
SIZE	TYPE	DRAWING NAME	REV
<b>B</b>	<b>I</b>	<b>311SX2-T2</b>	<b>6</b>
SCALE	WEIGHT:	SHEET 1 OF 1	