

HONEYWELL
PART NUMBER
311SX2-H58
PRODUCT CODE
VDS0015

REV	DOCUMENT	CHANGED BY	CHECK
10	0038558	SS 08MAY08	BLR

B

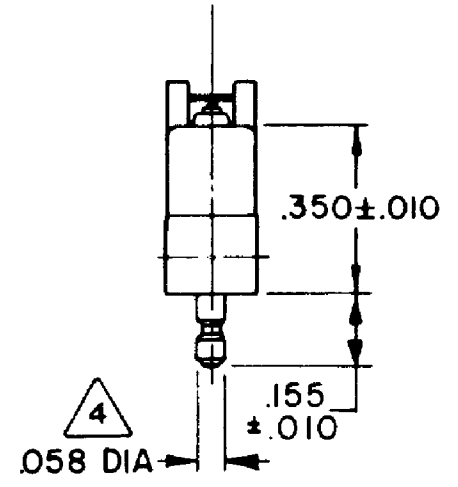
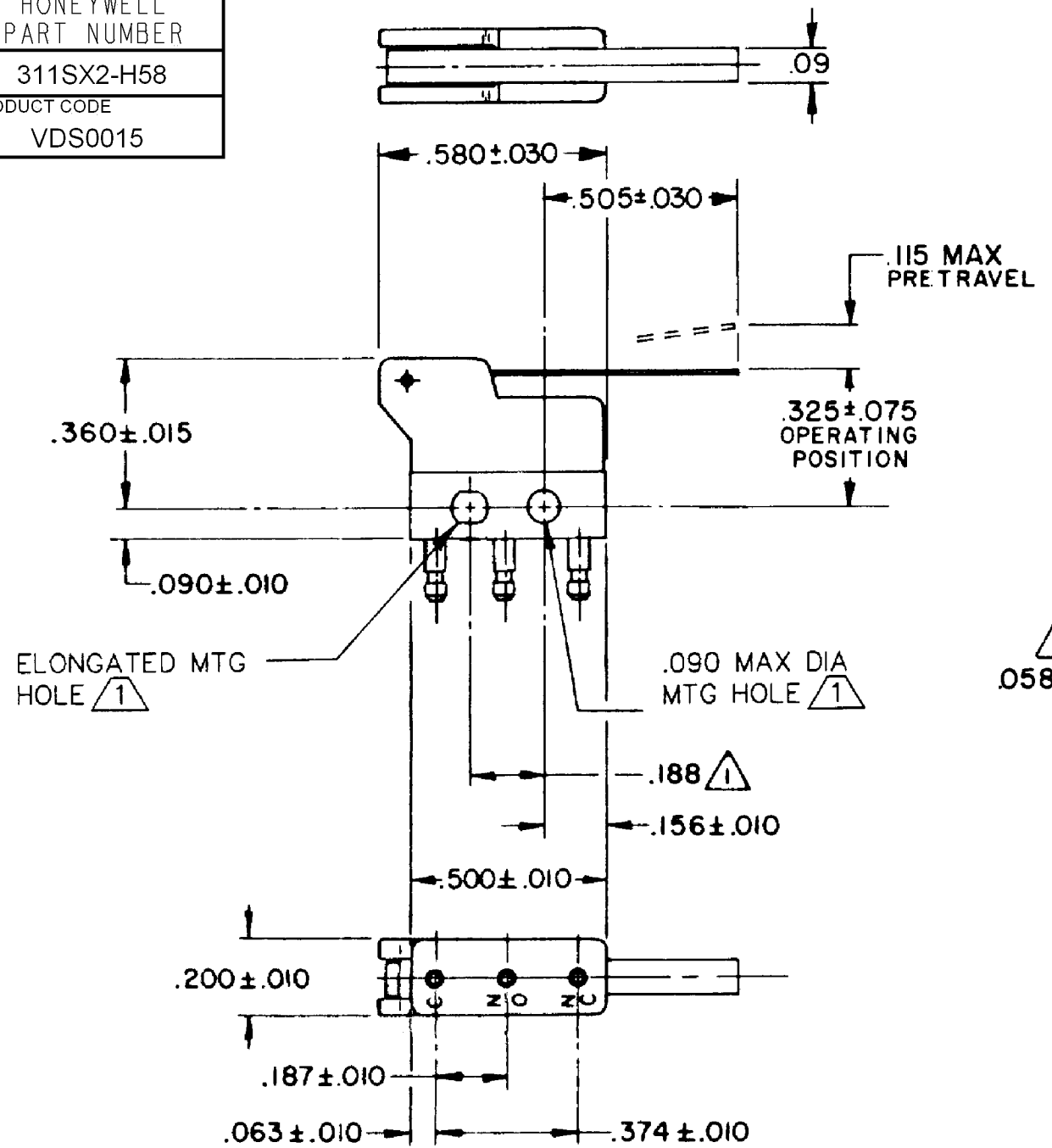
B

A

A

A

A



NOTES

- 1 MOUNTING HOLES WILL ACCEPT PINS OR SCREWS OF .087 MAX DIA ON .188±.002 CENTERS
- 2 - TERMINALS ARE PLATED FOR SOLDERING
- 3 - SWITCH WILL WITHSTAND TEMPERATURE OF 250° F
- 4 PLATED TERMINALS WILL ACCEPT "AMP INC." .058 PIN RECEPTACLES.

RELEASE NO.	PR-9302
REPLACES	

CHARACTERISTICS	
OPERATING FORCE	- - -30 GRAM MAX
RELEASE FORCE	- - - - 5 GRAM MIN
DIFFERENTIAL TRAVEL	- - .035 MAX
OVERTRAVEL	- - - - - .025 MIN

ELECTRICAL DATA			
CONTACT ARRANGEMENT SPDT			
	28 VOLTS DC RATING		115 VOLTS AC, 60 CPS
	SEA LEVEL	50,000 FT	SEA LEVEL
INDUCTIVE	3 AMP	2 AMP	5 AMP
RESISTIVE	5 AMP	4 AMP	5 AMP
APPROVALS	KEMA, CE 5A 250 V ~ T125 5E4 UL, CSA 5A 250 VAC BRAND L4L		

DESIGN UNITS: INCH
TOLERANCES UNLESS NOTED:
NO PLACE X ±
ONE PLACE .X ±
TWO PLACE .XX ±
THREE PLACE .XXX ±
FOUR PLACE .XXXX ±
ANGLES ±
0.030
0.015
0.005
THIRD ANGLE PROJECTION

DRAWN	SPK	25FEB08
CHECK	RJ	25FEB08
THIS DRAWING COVERS A PROPRIETARY ITEM AND IS THE PROPERTY OF HONEYWELL. THIS DRAWING IS NOT TO BE COPIED OR USED WITHOUT THE PERMISSION OF HONEYWELL.		
INTERPRET PER ANSI Y14.5M-1982 OTHER HONEYWELL ENGINEERING STANDARDS MAY APPLY		
RASTER		

Honeywell			
TITLE SWITCH - BASIC			
SIZE	TYPE	DRAWING NAME	REV
B	I	311SX2-H58	10
SCALE	-	WEIGHT: .003 LB MAX	SHEET 1 OF 1