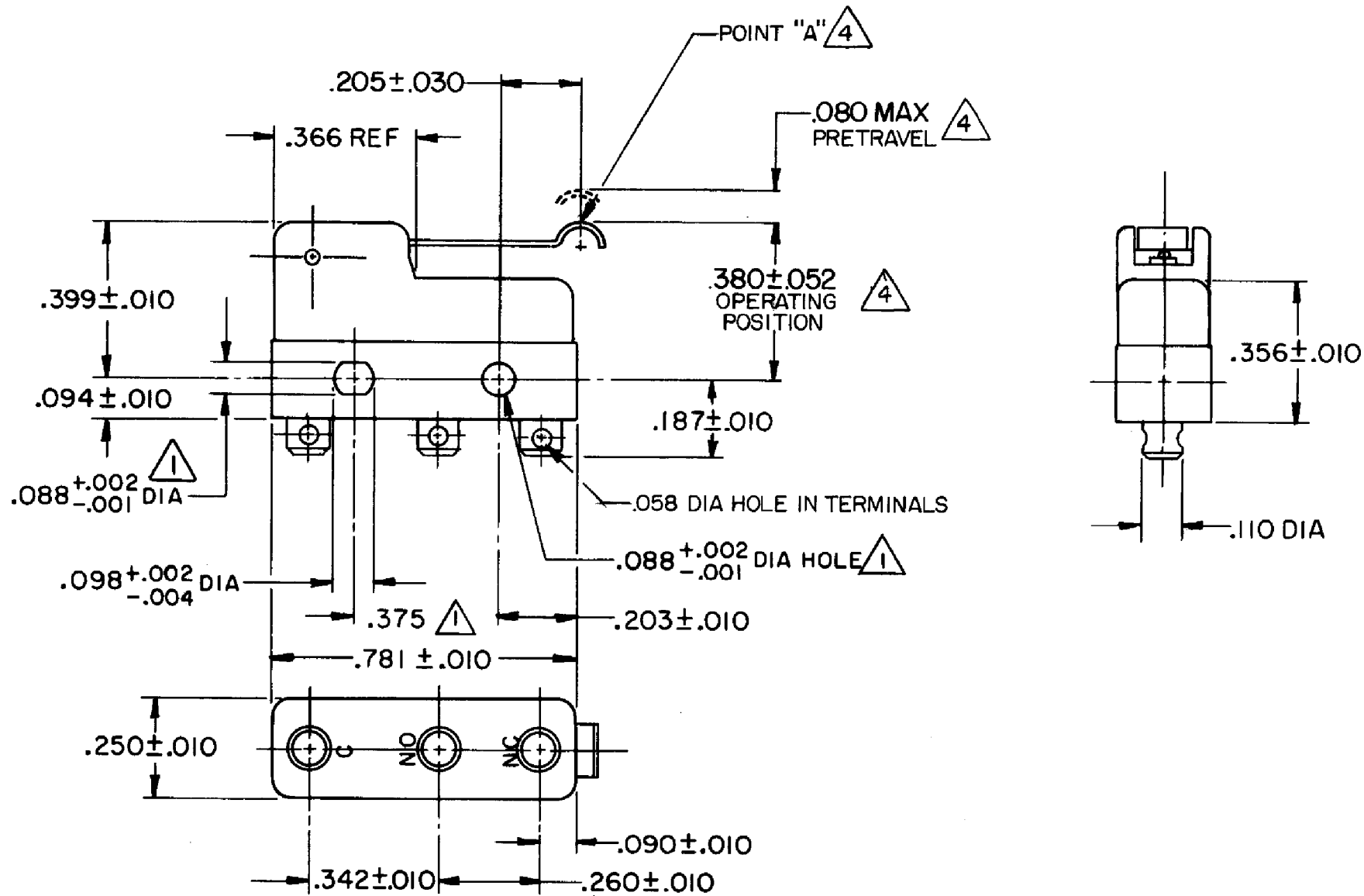
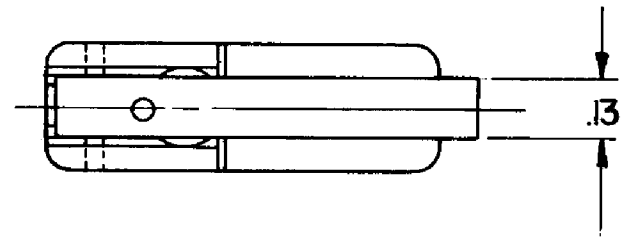


HONEYWELL PART NUMBER
311SM95
PRODUCT CODE TZA2660

REV	DOCUMENT	CHANGED BY	CHECK
4	0038114	KVS 03JUN08	ASD



NOTE -

- 1 MOUNTING HOLES WILL ACCEPT PINS OR SCREWS OF .087 MAX DIA ON .375 ± .002 CENTERS
- 2 SWITCH WILL WITHSTAND TEMPERATURE OF 250°F
- 3 TERMINALS ARE PLATED FOR SOLDERING
- 4 CHARACTERISTICS ARE TAKEN AT POINT "A"

RELEASE NO.	PR - 2022
REPLACES	-

CHARACTERISTICS	4
OPERATING FORCE - -	45 GRAM MAX
RELEASE FORCE - - - -	7 GRAM MIN
DIFFERENTIAL TRAVEL - - -	.018 MAX
OVERTRAVEL - - - - -	.017 MIN

ELECTRICAL DATA	
CONTACT ARRANGEMENT SPDT	
30 VOLTS DC RATING	
	SEA LEVEL 50,000 FT
INDUCTIVE	3 AMP 2.5 AMP
RESISTIVE	5 AMP 5 AMP
MAXIMUM INRUSH 24 AMP	
APPROVALS	KEMA, CE 5A, 250V ~ T85 1E4
	UL, CSA 5A, 250 VAC

DESIGN UNITS: INCH
TOLERANCES UNLESS NOTED:
NO PLACE X ±
ONE PLACE .X ±
TWO PLACE .XX ±
THREE PLACE .XXX ±
FOUR PLACE .XXXX ±
ANGLES ±
THIRD ANGLE PROJECTION

DRAWN	VK	08 NOV 07
CHECK	RJ	08 NOV 07
THIS DRAWING COVERS A PROPRIETARY ITEM AND IS THE PROPERTY OF HONEYWELL. THIS DRAWING IS NOT TO BE COPIED OR USED WITHOUT THE PERMISSION OF HONEYWELL.		
INTERPRET PER ANSI Y14.5M-1982 OTHER HONEYWELL ENGINEERING STANDARDS MAY APPLY		
RASTER		

Honeywell			
TITLE SWITCH - BASIC			
SIZE	TYPE	DRAWING NAME	REV
B	I	311SM95	4
SCALE	-	WEIGHT .006 LB MAX	SHEET 1 OF 1