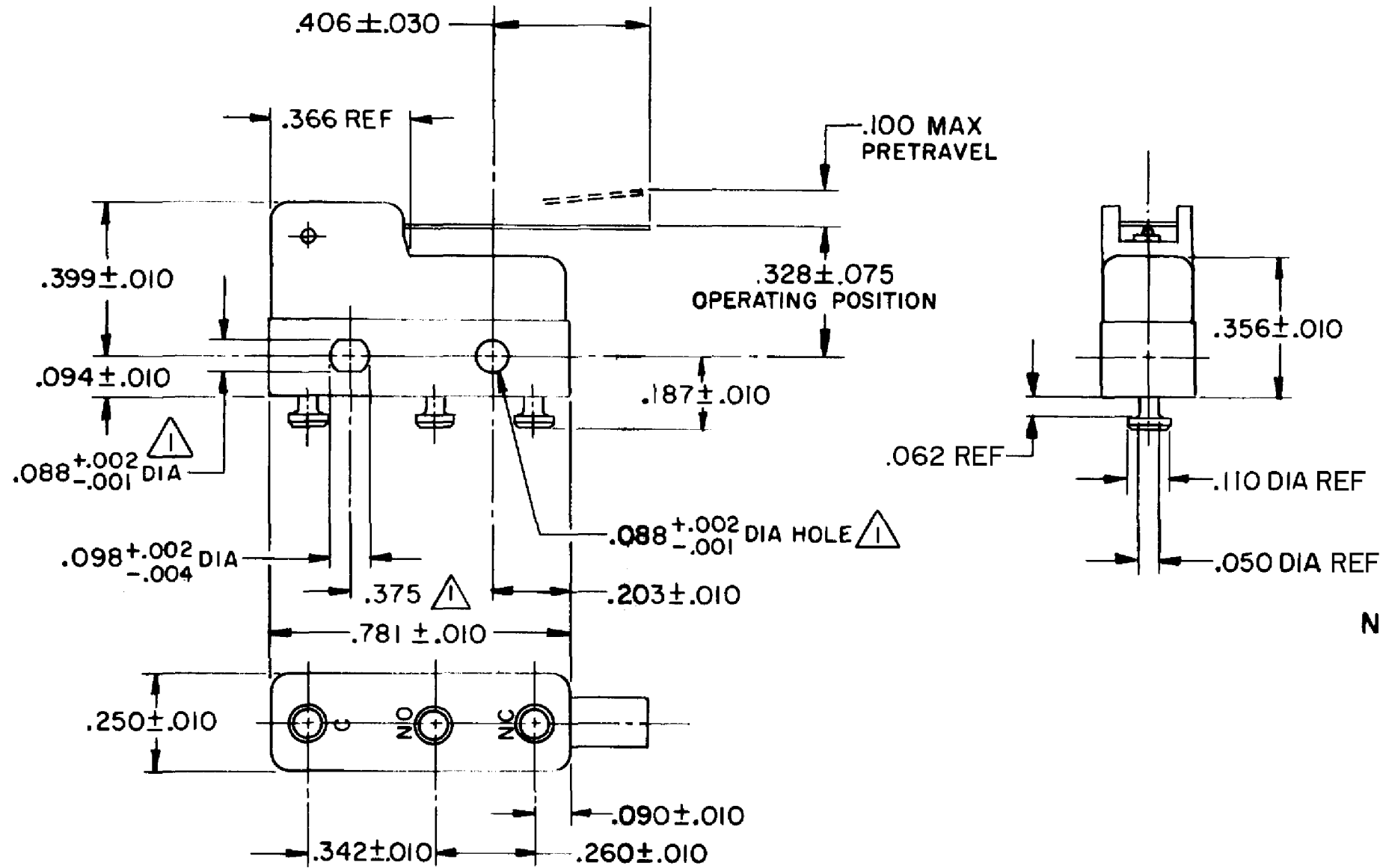
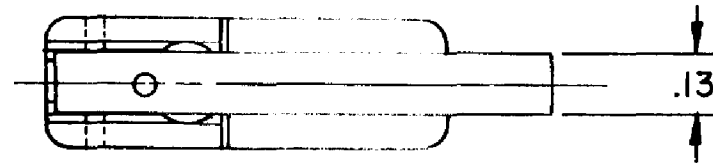


HONEYWELL PART NUMBER
311SM71-T
PRODUCT CODE TZA2675

REV	DOCUMENT	CHANGED BY	CHECK
7	0038114	KVS 03JUN08	ASD



**NOTE -**  
 ▲ MOUNTING HOLES WILL ACCEPT PINS OR SCREWS OF .087 MAX DIA ON .375 ± .002 CENTERS  
 2- SWITCH WILL WITHSTAND TEMPERATURE OF 250°F  
 3- TERMINALS ARE PLATED FOR SOLDERING

RELEASE NO.	PR - 372
REPLACES	-

CHARACTERISTICS	
OPERATING FORCE	35 GRAM MAX
RELEASE FORCE	6 GRAM MIN
DIFFERENTIAL TRAVEL	.027 MAX
OVERTRAVEL	.023 MIN

ELECTRICAL DATA			
CONTACT ARRANGEMENT SPDT			
30 VOLTS DC RATING			
	SEA LEVEL	50,000 FT	
INDUCTIVE	3 AMP	2.5 AMP	
RESISTIVE	5 AMP	5 AMP	
MAXIMUM INRUSH 24 AMP			
APPROVALS	KEMA, CE	5A, 250V ~ T85 1E4	CE
	UL, CSA	5A, 250 VAC	UL BRAND L4

DESIGN UNITS: INCH
TOLERANCES UNLESS NOTED:
NO PLACE X ± -
ONE PLACE .X ± 0.030
TWO PLACE .XX ± 0.015
THREE PLACE .XXX ± 0.005
FOUR PLACE .XXXX ± -
ANGLES ± -
THIRD ANGLE PROJECTION

DRAWN	VK	07 NOV 07
CHECK	RJ	07 NOV 07
THIS DRAWING COVERS A PROPRIETARY ITEM AND IS THE PROPERTY OF HONEYWELL. THIS DRAWING IS NOT TO BE COPIED OR USED WITHOUT THE PERMISSION OF HONEYWELL.		
INTERPRET PER ANSI Y14.5M-1982 OTHER HONEYWELL ENGINEERING STANDARDS MAY APPLY		
RASTER		

<b>Honeywell</b>			
TITLE SWITCH - BASIC			
SIZE	TYPE	DRAWING NAME	REV
<b>B</b>	<b>I</b>	<b>311SM71-T</b>	<b>7</b>
SCALE	-	WEIGHT .006 LB MAX	SHEET 1 OF 1