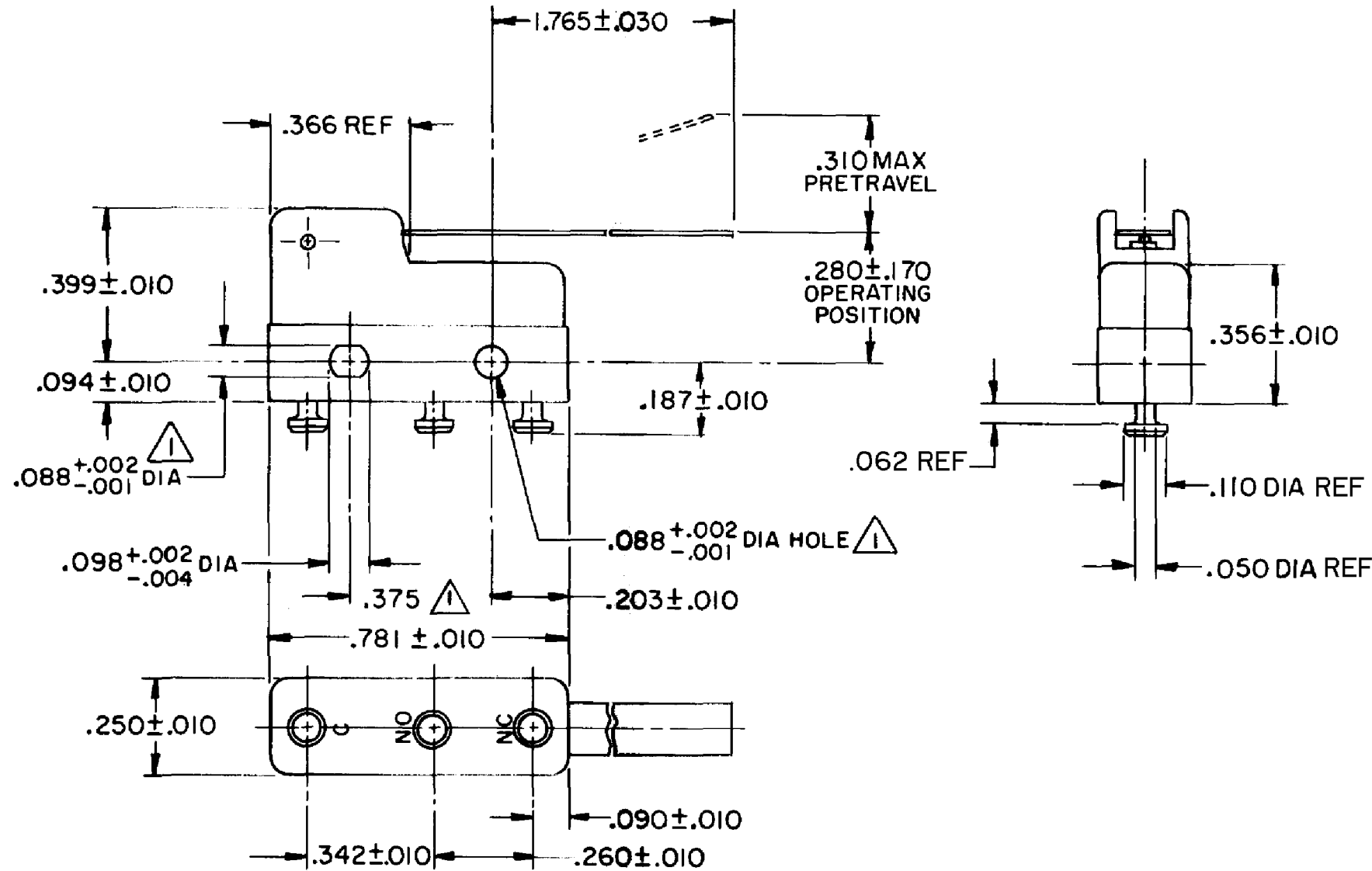
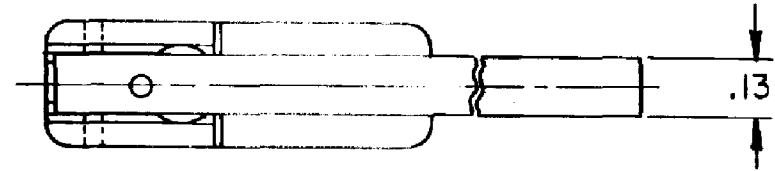


HONEYWELL
PART NUMBER
311SM717-T
PRODUCT CODE
TZA2708

REV	DOCUMENT	CHANGED BY	CHECK
7	0038115	VS 28APR08	BLR



- NOTE -
- ▲ MOUNTING HOLES WILL ACCEPT PINS OR SCREWS OF .087 MAX DIA ON .375 ± .002 CENTERS
 - 2- TERMINALS ARE PLATED FOR SOLDERING
 - 3- MATING CONTACT SURFACES ARE 24K SOLID GOLD OVERLAY
 - 4- SWITCH WILL WITHSTAND TEMPERATURE OF 250°F

RELEASE NO. PR - 6589
REPLACES -

CHARACTERISTICS	
OPERATING FORCE	6 GRAM MAX
RELEASE FORCE	1 GRAM MIN
DIFFERENTIAL TRAVEL	.070 MAX
OVERTRAVEL	.057 MIN

ELECTRICAL DATA		
CONTACT ARRANGEMENT SPDT		
30 VOLTS DC RATING		
	SEA LEVEL	50,000 FT
INDUCTIVE	1/2 AMP	1/2 AMP
RESISTIVE	1 AMP	1 AMP
MAXIMUM INRUSH 2 AMP		
APPROVALS	KEMA, CE	1A, 250V ~ T85 1E4
	UL, CSA	1A, 125 VAC

DESIGN UNITS: INCH	
TOLERANCES UNLESS NOTED:	
NO PLACE	X ±
ONE PLACE	.X ±
TWO PLACE	.XX ±
THREE PLACE	.XXX ±
FOUR PLACE	.XXXX ±
ANGLES	±
THIRD ANGLE PROJECTION	

DRAWN	VK	21 NOV 07
CHECK	RJ	21 NOV 07
THIS DRAWING COVERS A PROPRIETARY ITEM AND IS THE PROPERTY OF HONEYWELL. THIS DRAWING IS NOT TO BE COPIED OR USED WITHOUT THE PERMISSION OF HONEYWELL.		
INTERPRET PER ANSI Y14.5M-1982 OTHER HONEYWELL ENGINEERING STANDARDS MAY APPLY		
RASTER		

Honeywell			
TITLE SWITCH - BASIC			
SIZE	TYPE	DRAWING NAME	REV
B	I	311SM717-T	7
SCALE	-	WEIGHT .006 LB MAX	SHEET 1 OF 1